

## Nrf2 (PTR2557) Mouse mAb

CatalogNo: YM4294

### Key Features

**Host Species**

- Mouse

**Reactivity**

- Human, Mouse, Rat,

**Applications**

- WB, IF, ELISA

**MW**

- 68kD (Calculated)
- 90-100kD (Observed)

**Isotype**

- IgG

### Recommended Dilution Ratios

**WB 1:500-2000****IF 1:100-500****ELISA 1:1000-5000**

### Storage

**Storage\*** -15°C to -25°C/1 year(Do not lower than -25°C)**Formulation** PBS, 50% glycerol, 0.05% Proclin 300, 0.05%BSA

### Basic Information

**Clonality** Monoclonal**Clone Number** PTR2557

### Immunogen Information

**Immunogen** Synthesized peptide derived from human Nrf2 AA range: 300-400**Specificity** This antibody detects endogenous levels of Nrf2 protein.

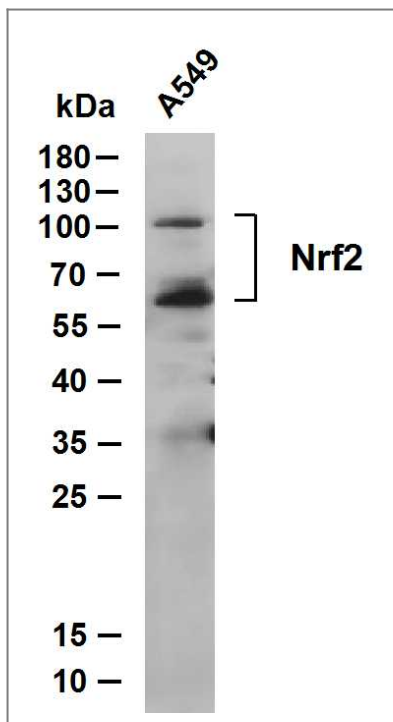
---

## | Target Information

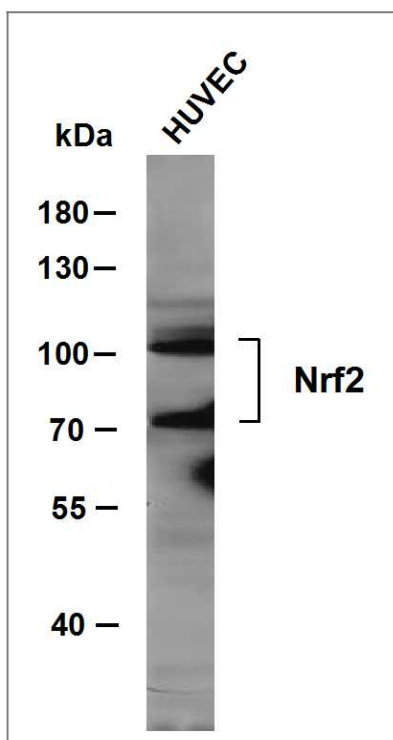
Gene name	NFE2L2 NRF2		
Protein Name	Nuclear factor erythroid 2-related factor 2 (NF-E2-related factor 2) (NFE2-related factor 2) (HEBP1) (Nuclear factor, erythroid derived 2, like 2)		
	Organism	Gene ID	UniProt ID
	Human	<a href="#">4780</a> ;	<a href="#">Q16236</a> ;
	Mouse	<a href="#">18024</a> ;	<a href="#">Q60795</a> ;
	Rat	<a href="#">83619</a> ;	<a href="#">O54968</a> ;
Cellular Localization	Cytoplasmic, Nuclear		
Tissue specificity	Widely expressed. Highest expression in adult muscle, kidney, lung, liver and in fetal muscle.		
Function	Domain:Acidic activation domain in the N-terminus, and DNA binding domain in the C-terminus.,Function:Transcription activator that binds to antioxidant response (ARE) elements in the promoter regions of target genes. Important for the coordinated up-regulation of genes in response to oxidative stress. May be involved in the transcriptional activation of genes of the beta-globin cluster by mediating enhancer activity of hypersensitive site 2 of the beta-globin locus control region.,PTM:Phosphorylation of Ser-40 by PKC in response to oxidative stress dissociates NFE2L2 from its cytoplasmic inhibitor KEAP1, promoting its translocation into the nucleus.,similarity:Belongs to the bZIP family.,similarity:Belongs to the bZIP family. CNC subfamily.,similarity:Contains 1 bZIP domain.,subcellular location:Cytosolic under unstressed conditions, translocates into the nucleus upon induction by electrophilic agents.,subunit:Heterodimer. May bind DNA with an unknown protein. Interacts with KEAP1. Interacts via its leucine-zipper domain with the coiled-coil domain of PMF1.,tissue specificity:Widely expressed. Highest expression in adult muscle, kidney, lung, liver and in fetal muscle.,		

---

## | Validation Data



Whole cell lysates were separated by 12% SDS-PAGE, and the membrane was blotted with anti-Nrf2 antibody. The HRP-conjugated anti-Mouse IgG antibody was used to detect the antibody. Lane 1: A549



Whole cell lysates were separated by 8% SDS-PAGE, and the membrane was blotted with anti-Nrf2 antibody. The HRP-conjugated anti-Mouse IgG antibody was used to detect the antibody. Lane 1: HUVEC

## | Contact information

Orders: [order@immunoway.com](mailto:order@immunoway.com)  
 Support: [tech@immunoway.com](mailto:tech@immunoway.com)  
 Telephone: 877-594-3616 (Toll Free), 408-747-0185  
 Website: <http://www.immunoway.com>  
 Address: 2200 Ringwood Ave San Jose, CA 95131 USA



Please scan the QR code  
 to access additional  
 product information:  
**Nrf2 (PTR2557)**  
**Mouse mAb**

