

# GI Syn/Glutamine Synthetase (PTR1400) Mouse mAb

CatalogNo: YM4292

## Key Features

### Host Species

- Mouse

### Reactivity

- Human, Mouse, Rat

### Applications

- WB, IF, ELISA, IHC

### MW

- 42kD (Calculated)
- 42kD (Observed)

## Recommended Dilution Ratios

IHC 1:200-1000

WB 1:500-2000

IF 1:100-500

ELISA 1:1000-5000

## Storage

**Storage\*** -15°C to -25°C/1 year (Do not lower than -25°C)

**Formulation** PBS, 50% glycerol, 0.05% Proclin 300, 0.05% BSA

## Basic Information

**Clonality** Monoclonal

**Clone Number** PTR1400

## Immunogen Information

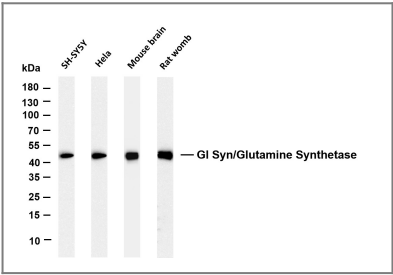
**Immunogen** AA range: 300-400

**Specificity** This antibody detects endogenous levels of GI Syn/Glutamine Synthetase protein.

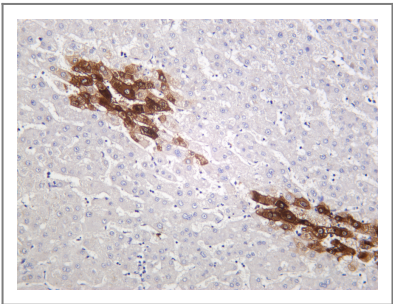
## Target Information

Gene name	GLUL		
Protein Name	Glutamine synthetase		
	Organism	Gene ID	UniProt ID
	Human	<a href="#">2752</a> ;	<a href="#">P15104</a> ;
	Mouse	<a href="#">14645</a> ;	<a href="#">P15105</a> ;
	Rat	<a href="#">24957</a> ;	<a href="#">P09606</a> ;
Cellular Localization	Membrane, Cytoplasm		
Tissue specificity	Expressed in endothelial cells.		
Function	Catalytic activity:ATP + L-glutamate + NH(3) = ADP + phosphate + L-glutamine.,Disease:Defects in GLUL are the cause of congenital systemic glutamine deficiency (CSGD) [MIM:610015]. CSGD is a rare developmental disorder with severe brain malformation resulting in multi-organ failure and neonatal death. Glutamine is largely absent from affected patients serum, urine and cerebrospinal fluid.,online information:Glutamine synthetase entry,similarity:Belongs to the glutamine synthetase family.,subunit:Homooctamer.,		

## Validation Data



Various whole cell lysates were separated by 4-20% SDS-PAGE, and the membrane was blotted with anti-Gl Syn/Glutamine Synthetase (PTR1400) antibody. The HRP-conjugated Goat anti-Rabbit IgG(H + L) antibody was used to detect the antibody. Lane 1: SH-SY5Y Lane 2: Hela Lane 3: Mouse brain Lane 4: Rat womb Predicted band size: 42kDa Observed band size: 42kDa



Human liver was stained with anti-Gl Syn/Glutamine Synthetase (PTR1400) mouse antibody

## Contact information

Orders: order@immunoway.com  
Support: tech@immunoway.com  
Telephone: 877-594-3616 (Toll Free), 408-747-0185  
Website: http://www.immunoway.com  
Address: 2200 Ringwood Ave San Jose, CA 95131 USA



Please scan the QR code  
to access additional  
product information:  
**GI Syn/Glutamine  
Synthetase  
(PTR1400) Mouse  
mAb**

---

For Research Use Only. Not for Use in Diagnostic Procedures.

[Antibody](#) | [ELISA Kits](#) | [Protein](#) | [Reagents](#)