

Bcl-6 (PTR2017) Mouse mAb

CatalogNo: YM4257

Key Features

Host Species

- Mouse

Reactivity

- Human, Mouse

Applications

- WB, IF, ELISA

MW

- 78kD (Calculated)
78kD (Observed)

Isotype

- IgG3, Kappa

Recommended Dilution Ratios

WB 1:500-2000

IF 1:100-500

ELISA 1:1000-5000

Storage

Storage* -15°C to -25°C/1 year (Do not lower than -25°C)

Formulation PBS, 50% glycerol, 0.05% Proclin 300, 0.05% BSA

Basic Information

Clonality Monoclonal

Clone Number PTR2017

Immunogen Information

Immunogen Synthesized peptide derived from human BCL6. AA range: 250-350

Specificity This antibody detects endogenous levels of Bcl-6.

Target Information

Gene name BCL6

Protein Name B-cell lymphoma 6 protein

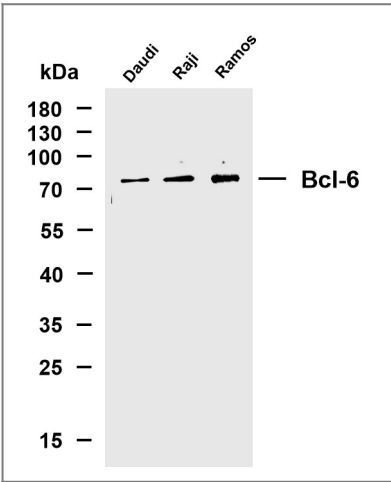
Organism	Gene ID	UniProt ID
Human	604 ;	P41182 ;
Mouse	12053 ;	P41183 ;

Cellular Localization Nuclear

Tissue specificity Expressed in germinal center T- and B-cells and in primary immature dendritic cells.

Function Disease:A chromosomal aberration involving BCL6 may be a cause of a form of B-cell leukemia. Translocation t(3;11)(q27;q23) with POU2AF1/OBF1.,Disease:A chromosomal aberration involving BCL6 may be a cause of lymphoma. Translocation t(3;4)(q27;p11) with ARHH/TTF.,Disease:Chromosomal aberrations involving BCL6 may be a cause of B-cell non-Hodgkin lymphoma. Translocation t(3;14)(q27;q32); translocation t(3;22)(q27;q11) with immunoglobulin gene regions.,Function:Transcriptional repressor which is required for germinal center formation and antibody affinity maturation. Probably plays an important role in lymphomagenesis.,induction:Down-regulated during maturation of dendritic cells by selective stimuli such as LPS, CD40L and zymosan.,PTM:Phosphorylated by MAPK1 in response to antigen receptor activation. Phosphorylation induces its degradation by ubiquitin/proteasome pathway.,similarity:Contains 1 BTB (POZ) domain.,similarity:Contains 6 C2H2-type zinc fingers.,subunit:Interacts with ZBTB7 and BCL6B (By similarity). Interacts with the catalytic domain of HDAC9.,tissue specificity:Expressed in germinal center T and B cells and in primary immature dendritic cells.,

Validation Data



Various whole cell lysates were separated by 10% SDS-PAGE, and the membrane was blotted with anti-Bcl-6 (PTR2017) antibody. The HRP-conjugated Goat anti-Mouse IgG(H + L) antibody was used to detect the antibody. Lane 1: Daudi Lane 2: Raji Lane 3: Ramos

| Contact information

Orders: order@immunoway.com
Support: tech@immunoway.com
Telephone: 877-594-3616 (Toll Free), 408-747-0185
Website: <http://www.immunoway.com>
Address: 2200 Ringwood Ave San Jose, CA 95131 USA



Please scan the QR code
to access additional
product information:
Bcl-6 (PTR2017)
Mouse mAb

For Research Use Only. Not for Use in Diagnostic Procedures.

[Antibody](#) | [ELISA Kits](#) | [Protein](#) | [Reagents](#)