

## β-Tubulin (PTR1389) Mouse mAb

CatalogNo: YM4241

### | Key Features

#### Host Species

- Mouse

#### Reactivity

- Human, Mouse, Rat, Pig,

#### Applications

- WB, IF, ELISA

#### MW

- 50kD (Calculated)  
50kD (Observed)

### | Recommended Dilution Ratios

**WB 1:500-2000**

**IF 1:100-500**

**ELISA 1:1000-5000**

### | Storage

**Storage\*** -15°C to -25°C/1 year(Do not lower than -25°C)

**Formulation** PBS, 50% glycerol, 0.05% Proclin 300, 0.05%BSA

### | Basic Information

**Clonality** Monoclonal

**Clone Number** PTR1389

### | Immunogen Information

**Immunogen** AA range: 400-500

**Specificity** This antibody detects endogenous levels of Beta Tubulin protein.

## Target Information

**Gene name** TUBB

**Protein Name** Tubulin beta chain (Tubulin beta-5 chain)

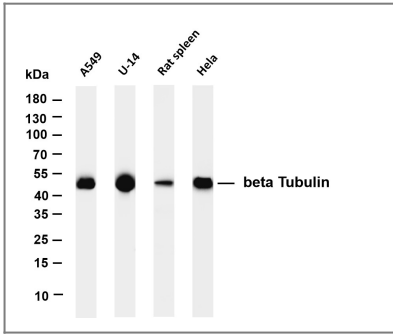
Organism	Gene ID	UniProt ID
Human	<a href="#">203068</a> ;	<a href="#">P07437</a> ;
Mouse		<a href="#">P99024</a> ;
Rat		<a href="#">P69897</a> ;

**Cellular Localization** Cytoplasm

**Tissue specificity** Ubiquitously expressed with highest levels in spleen, thymus and immature brain.

**Function** Domain:The highly acidic C-terminal region may bind cations such as calcium.,Function:Tubulin is the major constituent of microtubules. It binds two moles of GTP, one at an exchangeable site on the beta chain and one at a non-exchangeable site on the alpha-chain.,online information:Tubulin entry,similarity:Belongs to the tubulin family.,subunit:Dimer of alpha and beta chains.,tissue specificity:Ubiquitously expressed with highest levels in spleen, thymus and immature brain.,

## Validation Data



Various whole cell lysates were separated by 4-20% SDS-PAGE, and the membrane was blotted with anti-beta Tubulin (PTR1389) antibody. The HRP-conjugated Goat anti-Rabbit IgG(H + L) antibody was used to detect the antibody. Lane 1: A549 Lane 2: U-14 Lane 3: Rat spleen Lane 4: HeLa  
Predicted band size: 50kDa Observed band size: 50kDa

## Contact information

Orders: [order@immunoway.com](mailto:order@immunoway.com)  
Support: [tech@immunoway.com](mailto:tech@immunoway.com)  
Telephone: 877-594-3616 (Toll Free), 408-747-0185  
Website: <http://www.immunoway.com>  
Address: 2200 Ringwood Ave San Jose, CA 95131 USA



Please scan the QR code to access additional product information:  
**β-Tubulin (PTR1389)**  
**Mouse mAb**

