

MEK5 (2G10) Mouse mAb

CatalogNo: YM3803

Key Features

Host Species

- Mouse

Reactivity

- Human, Mouse, Rat

Applications

- WB, IHC

MW

- 49kD (Observed)

Recommended Dilution Ratios

IHC 1:200-1:1000

WB 1:500-2000

Storage

Storage* -15°C to -25°C/1 year (Do not lower than -25°C)

Formulation Liquid in PBS containing 50% glycerol, 0.5% BSA and 0.02% sodium azide.

Basic Information

Clonality Monoclonal

Clone Number 2G10

Immunogen Information

Immunogen Synthesized peptide derived from human MEK5

Specificity This antibody detects endogenous levels of MEK5 at Human, Mouse, Rat

Target Information

Gene name MAP2K5 MEK5 MKK5 PRKMK5

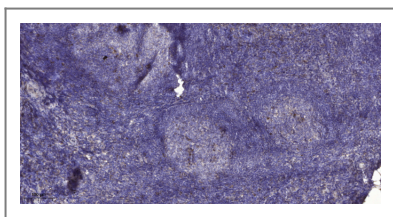
Protein Name Dual specificity mitogen-activated protein kinase kinase 5

Organism	Gene ID	UniProt ID
Human	5607 ;	Q13163 ;
Mouse	23938 ;	Q9WVS7 ;
Rat	29568 ;	Q62862 ;

Tissue specificity Expressed in many adult tissues. Abundant in heart and skeletal muscle.

Function Catalytic activity:ATP + a protein = ADP + a phosphoprotein.,cofactor:Magnesium.,Domain:Binds MAP3K2/MAP3K3 and MAPK7 via non-overlapping residues of the OPR domain. This domain also mediates interactions with SQSTM1 and PARD6A.,Function:Acts as a scaffold for the formation of a ternary MAP3K2/MAP3K3-MAP3K5-MAPK7 signaling complex. Activation of this pathway appear to play a critical role in protecting cells from stress-induced apoptosis, neuronal survival and cardiac development and angiogenesis.,PTM:Activated by phosphorylation on Ser/Thr by MAP kinase kinase kinases.,PTM:Yersinia yopJ may acetylate Ser/Thr residues, preventing phosphorylation and activation, thus blocking the MAPK signaling pathway.,similarity:Belongs to the protein kinase superfamily. STE Ser/Thr protein kinase family. MAP kinase kinase subfamily.,similarity:Contains 1 OPR domain.,similarity:Contains 1 protein kinase domain.,subunit:Interacts with PARD6A, MAP3K3 and MAPK7. Forms a complex with SQSTM1 and PRKCZ or PRKCI (By similarity). Interacts with Yersinia yopJ.,tissue specificity:Expressed in many adult tissues. Abundant in heart and skeletal muscle.,

Validation Data



Immunohistochemical analysis of paraffin-embedded human tonsil. 1, Antibody was diluted at 1:200(4° overnight). 2, Tris-EDTA,pH9.0 was used for antigen retrieval. 3,Secondary antibody was diluted at 1:200(room temperature, 30min).

Contact information

Orders: order@immunoway.com
Support: tech@immunoway.com
Telephone: 877-594-3616 (Toll Free), 408-747-0185
Website: <http://www.immunoway.com>
Address: 2200 Ringwood Ave San Jose, CA 95131 USA



Please scan the QR code to access additional product information:
MEK5 (2G10) Mouse mAb

