

## p21 (PTR2559) Mouse mAb

CatalogNo: YM3802

### | Key Features

#### Host Species

- Mouse

#### Reactivity

- Human, Mouse,

#### Applications

- IHC, WB, IF, ELISA

#### MW

- 21kD (Calculated)  
21kD (Observed)

#### Isotype

- IgG1, Kappa

### | Recommended Dilution Ratios

**IHC 1:200-1000**

**WB 1:500-2000**

**IF 1:100-500**

**ELISA 1:1000-5000**

### | Storage

**Storage\*** -15°C to -25°C/1 year (Do not lower than -25°C)

**Formulation** PBS, 50% glycerol, 0.05% Proclin 300, 0.05% BSA

### | Basic Information

**Clonality** Monoclonal

**Clone Number** PTR2559

### | Immunogen Information

**Immunogen** Synthesized peptide derived from human p21 AA range: 1-100

**Specificity** This antibody detects endogenous levels of p21 protein.

## Target Information

**Gene name** CDKN1A CAP20 CDKN1 CIP1 MDA6 PIC1 SDI1 WAF1

**Protein Name** p21

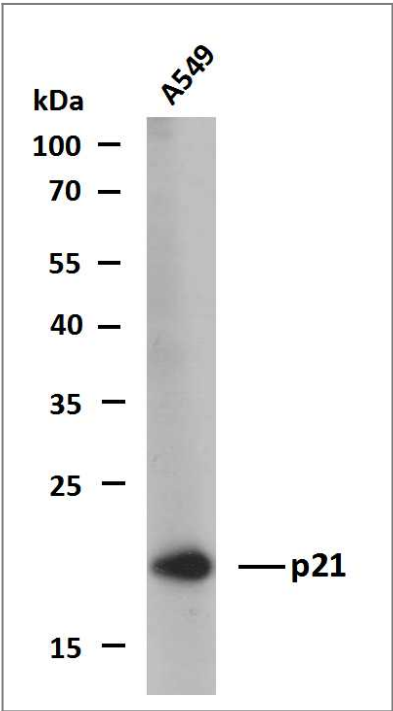
Organism	Gene ID	UniProt ID
Human	<a href="#">1026</a> ;	<a href="#">P38936</a> ;
Mouse	<a href="#">12575</a> ;	<a href="#">P39689</a> ;

**Cellular Localization** Cytoplasmic, Nuclear

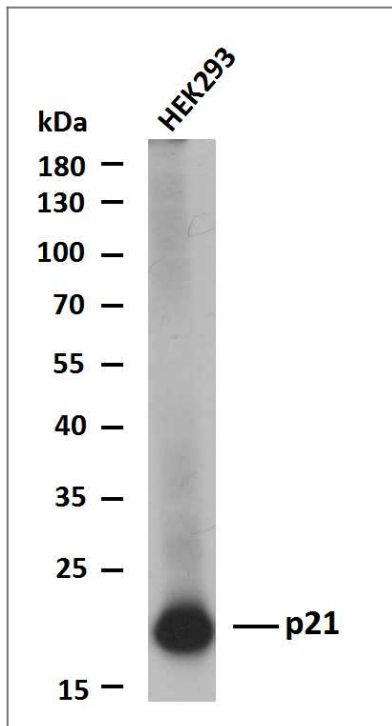
**Tissue specificity** Expressed in all adult tissues, with 5-fold lower levels observed in the brain.

**Function** Function:May be the important intermediate by which p53 mediates its role as an inhibitor of cellular proliferation in response to DNA damage. Binds to and inhibits cyclin-dependent kinase activity, preventing phosphorylation of critical cyclin-dependent kinase substrates and blocking cell cycle progression.,induction:By p53, mezerein (antileukemic compound) and interferon beta.,PTM:Phosphorylation of Thr-145 by Akt or of Ser-146 by PKC impairs binding to PCNA.,similarity:Belongs to the CDI family.,tissue specificity:Expressed in all adult human tissues, with 5-fold lower levels observed in the brain.,

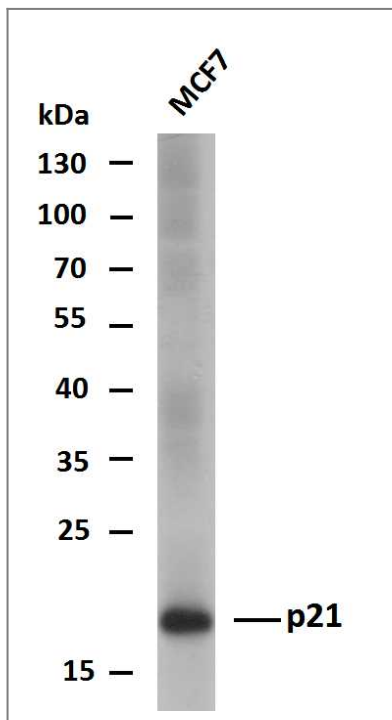
## Validation Data



Whole cell lysates of A549 were separated by 12% SDS-PAGE, and the membrane was blotted with anti-p21(PTR2559) antibody. The HRP-conjugated Goat anti-Mouse IgG(H + L) antibody was used to detect the antibody. Lane 1: A549



Whole cell lysates of HEK293 were separated by 12% SDS-PAGE, and the membrane was blotted with anti-p21(PTR2559) antibody. The HRP-conjugated Goat anti-Mouse IgG(H + L) antibody was used to detect the antibody. Lane 1: HEK293



Whole cell lysates of MCF7 were separated by 12% SDS-PAGE, and the membrane was blotted with anti-p21(PTR2559) antibody. The HRP-conjugated Goat anti-Mouse IgG(H + L) antibody was used to detect the antibody. Lane 1: MCF7

## Contact information

Orders: [order@immunoway.com](mailto:order@immunoway.com)  
 Support: [tech@immunoway.com](mailto:tech@immunoway.com)  
 Telephone: 877-594-3616 (Toll Free), 408-747-0185  
 Website: <http://www.immunoway.com>  
 Address: 2200 Ringwood Ave San Jose, CA 95131 USA



Please scan the QR code to access additional product information:  
**p21 (PTR2559)**  
**Mouse mAb**

