

14-3-3 eta (5B2) Mouse mAb

CatalogNo: YM3800

Key Features

Host Species

- Mouse

Reactivity

- Human, Mouse, Rat

Applications

- WB, IHC

MW

- 28kD (Observed)

Recommended Dilution Ratios

WB 1:500-2000

IHC 1:50-200

Storage

Storage* -15°C to -25°C/1 year (Do not lower than -25°C)

Formulation Liquid in PBS containing 50% glycerol, 0.5% BSA and 0.02% sodium azide.

Basic Information

Clonality Monoclonal

Clone Number 5B2

Immunogen Information

Immunogen Synthesized peptide derived from human 14-3-3 eta

Specificity This antibody detects endogenous levels of 14-3-3 eta at Human, Mouse, Rat

Target Information

Gene name YWHAH YWHA1

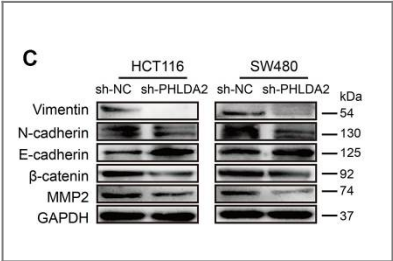
Protein Name 14-3-3 eta

| Organism | Gene ID | UniProt ID |
|----------|-------------------------|--------------------------|
| Human | 7533 ; | Q04917 ; |
| Mouse | 22629 ; | P68510 ; |
| Rat | 25576 ; | P68511 ; |

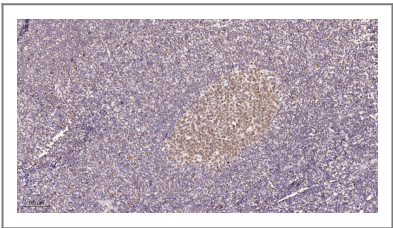
Tissue specificity Expressed mainly in the brain and present in other tissues albeit at lower levels.

Function Function:Adapter protein implicated in the regulation of a large spectrum of both general and specialized signaling pathway. Binds to a large number of partners, usually by recognition of a phosphoserine or phosphothreonine motif. Binding generally results in the modulation of the activity of the binding partner.,similarity:Belongs to the 14-3-3 family.,subunit:Homodimer (By similarity). Interacts with many nuclear hormone receptors and cofactors including AR, ESR1, ESR2, MC2R, NR3C1, NRIP1, PPARBP and THRA. Interacts with ABL1 (phosphorylated form); the interaction retains it in the cytoplasm. Interacts with RGNEF and PCTK1 (By similarity). Weakly interacts with CDKN1B.,tissue specificity:Expressed mainly in the brain and present in other tissues albeit at lower levels.,

Validation Data



Ma, Zhan, Shuping Lou, and Zheng Jiang. "PHLDA2 regulates EMT and autophagy in colorectal cancer via the PI3K/AKT signaling pathway." Aging (Albany NY) 12:9 (2020): 7985.



Immunohistochemical analysis of paraffin-embedded human tonsil. 1, Tris-EDTA,pH9.0 was used for antigen retrieval. 2 Antibody was diluted at 1:200(4° overnight.3,Secondary antibody was diluted at 1:200(room temperature, 45min).

Contact information

Orders: order@immunoway.com
Support: tech@immunoway.com
Telephone: 877-594-3616 (Toll Free), 408-747-0185
Website: <http://www.immunoway.com>
Address: 2200 Ringwood Ave San Jose, CA 95131 USA



Please scan the QR code to access additional product information:
14-3-3 eta (5B2)
Mouse mAb

