

Claudin-2 (8H11) Mouse mAb

CatalogNo: YM3796

Orthogonal Validated 

Key Features

Host Species

- Mouse

Reactivity

- Human, Mouse, Rat

Applications

- WB, IF, IHC

MW

- 25kD (Observed)

Recommended Dilution Ratios

WB 1:500-2000

IF/ICC 1:200-400

IHC

Storage

Storage* -15°C to -25°C/1 year (Do not lower than -25°C)**Formulation** Liquid in PBS containing 50% glycerol, 0.5% BSA and 0.02% sodium azide.

Basic Information

Clonality Monoclonal**Clone Number** 8H11

Immunogen Information

Immunogen Synthesized peptide derived from human Claudin-2**Specificity** This antibody detects endogenous levels of human Claudin-2

Target Information

Gene name CLDN2 PSEC0059 SP82 UNQ705/PRO1356

Protein Name Claudin-2

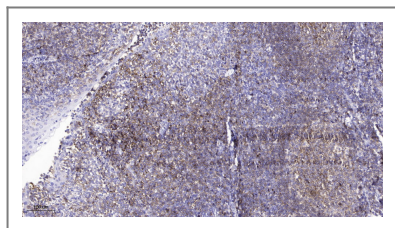
Organism	Gene ID	UniProt ID
Human	9075 ;	P57739 ;

Cellular Localization Cell junction, tight junction . Cell membrane ; Multi-pass membrane protein .

Tissue specificity Colon,Colon epithelium,Kidney,Skin,Teratocarcinoma,Thalamus,

Function Function:Plays a major role in tight junction-specific obliteration of the intercellular space, through calcium-independent cell-adhesion activity.,similarity:Belongs to the claudin family.,subunit:Can form homo- and heteropolymers with other CLDN. Homopolymers interact with CLDN3, but not CLDN1, homopolymers. Directly interacts with TJP1/ZO-1, TJP2/ZO-2 and TJP3/ZO-3.,

| Validation Data



Immunohistochemical analysis of paraffin-embedded human tonsil. 1, Antibody was diluted at 1:200(4° overnight). 2, Tris-EDTA,pH9.0 was used for antigen retrieval. 3,Secondary antibody was diluted at 1:200(room temperature, 45min).

| Contact information

Orders: order@immunoway.com
Support: tech@immunoway.com
Telephone: 877-594-3616 (Toll Free), 408-747-0185
Website: <http://www.immunoway.com>
Address: 2200 Ringwood Ave San Jose, CA 95131 USA



Please scan the QR code to access additional product information:
Claudin-2 (8H11)
Mouse mAb

For Research Use Only. Not for Use in Diagnostic Procedures.

[Antibody](#) | [ELISA Kits](#) | [Protein](#) | [Reagents](#)