

## HP1 $\gamma$ (3B9) Mouse mAb

CatalogNo: YM3742 **Orthogonal Validated** 

### Key Features

#### Host Species

- Mouse

#### Reactivity

- Human, Mouse, Rat

#### Applications

- WB, IHC, IF

#### MW

- 24kD (Observed)

### Storage

**Storage\*** -15°C to -25°C/1 year (Do not lower than -25°C)**Formulation** Liquid in PBS containing 50% glycerol, 0.5% BSA and 0.02% sodium azide.

### Recommended Dilution Ratios

**WB 1:500-2000****IHC 1:50-300****IF 1:50-200**

### Basic Information

**Clonality** Monoclonal**Clone Number** 3B9

### Immunogen Information

**Immunogen** Recombinant Protein of HP-1 $\gamma$ **Specificity** The antibody detects endogenous HP-1 $\gamma$  protein

### Target Information

**Gene name** CBX3

**Protein Name** Chromobox protein homolog 3 (HECH) (Heterochromatin protein 1 homolog gamma) (HP1 gamma) (Modifier 2 protein)

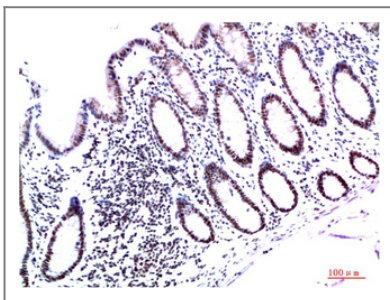
Organism	Gene ID	UniProt ID
Human	<a href="#">11335;</a>	<a href="#">Q13185;</a>
Mouse		<a href="#">P23198;</a>

**Cellular Localization** Nucleus . Associates with euchromatin and is largely excluded from constitutive heterochromatin. May be associated with microtubules and mitotic poles during mitosis (Potential) .

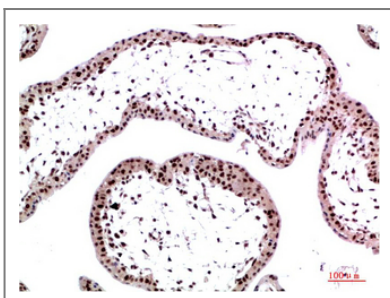
**Tissue specificity** Bone marrow,Brain,Cajal-Retzius cell,Epithelium,Liver,Placenta,

**Function** Function:Seems to be involved in transcriptional silencing in heterochromatin-like complexes. Recognizes and binds histone H3 tails methylated at 'Lys-9', leading to epigenetic repression. May contribute to the association of the heterochromatin with the inner nuclear membrane through its interaction with lamin B receptor (LBR). Involved in the formation of functional kinetochore through interaction with MIS12 complex proteins.,PTM:Phosphorylated by PIM1. Phosphorylated during interphase and possibly hyper-phosphorylated during mitosis.,similarity:Contains 2 chromo domains.,subcellular location:Associates with euchromatin and is largely excluded from constitutive heterochromatin. May be associated with microtubules and mitotic poles during mitosis.,subunit:Binds directly to CHAF1A. Interacts with histone H3 methylated at 'Lys-9'. Part of the E2F6.com-1 complex in G0 phase composed of E2F6, MGA, MAX, TFDP1, CBX3, BAT8, EUHMTASE1, RING1, RNF2, MBLR, L3MBTL2 and YAF2. Interacts with LBR, INCENP, TRIM28/TIF1B, SUV420H1, SUV420H2 and SP100. Interacts with TIF1A (By similarity). Interacts with MIS12 and C20orf127. Can interact directly with CBX5 via the chromoshadow domain.,

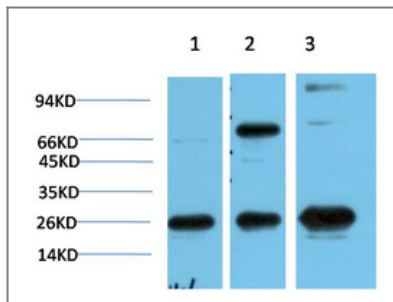
## Validation Data



Immunohistochemical analysis of paraffin-embedded Human Colon Carcinoma Tissue using HP-1 $\gamma$  Mouse mAb diluted at 1:200



Immunohistochemical analysis of paraffin-embedded Human Placenta Tissue using HP-1 $\gamma$  Mouse mAb diluted at 1:200



Western blot analysis of 1) Hela Cell Lysate, 2)3T3 Cell Lysate, 3) PC12 Cell Lysate using HP-1 $\gamma$  Mouse mAb diluted at 1:1000.

## Contact information

Orders: [order@immunoway.com](mailto:order@immunoway.com)  
Support: [tech@immunoway.com](mailto:tech@immunoway.com)  
Telephone: 877-594-3616 (Toll Free), 408-747-0185  
Website: <http://www.immunoway.com>  
Address: 2200 Ringwood Ave San Jose, CA 95131 USA



Please scan the QR code to access additional product information:  
**HP1 $\gamma$  (3B9) Mouse mAb**

For Research Use Only. Not for Use in Diagnostic Procedures.

[Antibody](#) | [ELISA Kits](#) | [Protein](#) | [Reagents](#)