

Gamma Tubulin (6C12) Mouse mAb

CatalogNo: YM3653

Key Features

Host Species

- Mouse

Reactivity

- Human,Rat,Mouse

Applications

- WB,IHC,IF

MW

- 50kD (Observed)

Recommended Dilution Ratios

WB 1:1000-2000

IHC 1:100-200

IF 1:50-200

Storage

Storage* -15°C to -25°C/1 year(Do not lower than -25°C)

Formulation Liquid in PBS containing 50% glycerol, 0.5% BSA and 0.02% sodium azide.

Basic Information

Clonality Monoclonal

Clone Number 6C12

Immunogen Information

Immunogen Synthetic Peptide of Gamma Tubulin

Specificity Gamma Tubulin protein detects endogenous levels of TUBG1

Target Information

Gene name TUBG1

Protein Name TUBG1

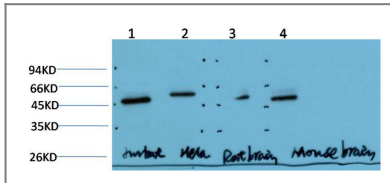
Organism	Gene ID	UniProt ID
Human	7283;	P23258;
Mouse		P83887;
Rat		P83888;

Cellular Localization Cytoplasm, cytoskeleton, microtubule organizing center, centrosome . Cytoplasm, cytoskeleton, spindle . Localizes to mitotic spindle microtubules. .

Tissue specificity Mammary cancer,Skin,

Function Function:Tubulin is the major constituent of microtubules. Gamma tubulin is found at microtubule organizing centers (MTOC) such as the spindle poles or the centrosome, suggesting that it is involved in the minus-end nucleation of microtubule assembly.,mass spectrometry: PubMed:11840567,similarity:Belongs to the tubulin family.,subunit:Interacts with GCP2 and GCP3. Interacts with B9D2.,

Validation Data



Western Blot analysis of paraffin-embedded Jurkat\HeLa\Mouse-brain\Rat-brain using Gamma Tubulin Mouse mAb diluted at 1:1000.

Contact information

Orders: order@immunoway.com
Support: tech@immunoway.com
Telephone: 877-594-3616 (Toll Free), 408-747-0185
Website: <http://www.immunoway.com>
Address: 2200 Ringwood Ave San Jose, CA 95131 USA



Please scan the QR code to access additional product information:
Gamma Tubulin (6C12) Mouse mAb

For Research Use Only. Not for Use in Diagnostic Procedures.

[Antibody](#) | [ELISA Kits](#) | [Protein](#) | [Reagents](#)