

Cyclin B1 (1A5) Mouse mAb

CatalogNo: YM3650

| Key Features

Host Species

- Mouse

Reactivity

- Human,Rat,Mouse

Applications

- IHC,IF

MW

- 55kD (Observed)

| Recommended Dilution Ratios

IHC 1:100-200

IF 1:50-200

| Storage

Storage* -15°C to -25°C/1 year(Do not lower than -25°C)

Formulation Liquid in PBS containing 50% glycerol, 0.5% BSA and 0.02% sodium azide.

| Basic Information

Clonality Monoclonal

Clone Number 1A5

| Immunogen Information

Immunogen Synthetic Peptide of Cyclin B1 at AA range of 60-140

Specificity Cyclin B1 protein detects endogenous levels of CCNB1

| Target Information

Gene name CCNB1

Protein Name CCNB1

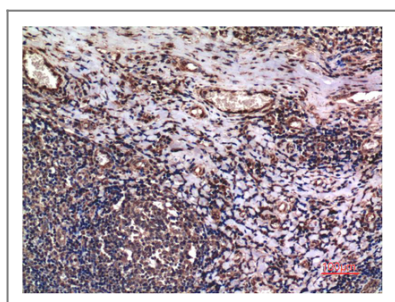
Organism	Gene ID	UniProt ID
Human	891 ;	P14635 ;
Mouse		P24860 ;
Rat		P30277 ;

Cellular Localization Cytoplasm. Nucleus. Cytoplasm, cytoskeleton, microtubule organizing center, centrosome.

Tissue specificity Breast adenocarcinoma,Lung,Placenta,

Function developmental stage:Accumulates steadily during G2 and is abruptly destroyed at mitosis.,Function:Essential for the control of the cell cycle at the G2/M (mitosis) transition.,PTM:Ubiquitinated by the SCF(NIPA) complex during interphase, leading to its destruction. Not ubiquitinated during G2/M phases.,similarity:Belongs to the cyclin family.,similarity:Belongs to the cyclin family. Cyclin AB subfamily.,subunit:Interacts with the CDC2 protein kinase to form a serine/threonine kinase holoenzyme complex also known as maturation promoting factor (MPF). The cyclin subunit imparts substrate specificity to the complex. Binds HEI10. Interacts with catalytically active RALBP1 and CDC2 during mitosis to form an endocytotic complex during interphase.,

Validation Data



Immunohistochemical analysis of paraffin-embedded Human Tonsil Tissue using Cyclin B1 Mouse mAb diluted at 1:200.

Contact information

Orders: order@immunoway.com
Support: tech@immunoway.com
Telephone: 877-594-3616 (Toll Free), 408-747-0185
Website: <http://www.immunoway.com>
Address: 2200 Ringwood Ave San Jose, CA 95131 USA



Please scan the QR code to access additional product information:
Cyclin B1 (1A5)
Mouse mAb

