

GSK3 β (PTR2553) Mouse mAb

CatalogNo: YM3633

Orthogonal Validated 

Key Features

Host Species

- Mouse

Reactivity

- Human, Mouse, Rat,

Applications

- WB, IHC, IF, ELISA

MW

- 46kD (Calculated)
- 42kD (Observed)

Isotype

- IgG1, Kappa

Recommended Dilution Ratios

IHC 1:200-1:1000

WB 1:500-2000

IF 1:100-500

ELISA 1:1000-5000

Storage

Storage* -15°C to -25°C/1 year(Do not lower than -25°C)**Formulation** PBS, 50% glycerol, 0.05% Proclin 300, 0.05%BSA

Basic Information

Clonality Monoclonal**Clone Number** PTR2553

Immunogen Information

Immunogen Synthetic Peptide of GSK3 β at AA range of 1-100**Specificity** This antibody detects endogenous levels of GSK3 β protein.

Target Information

Gene name GSK3B

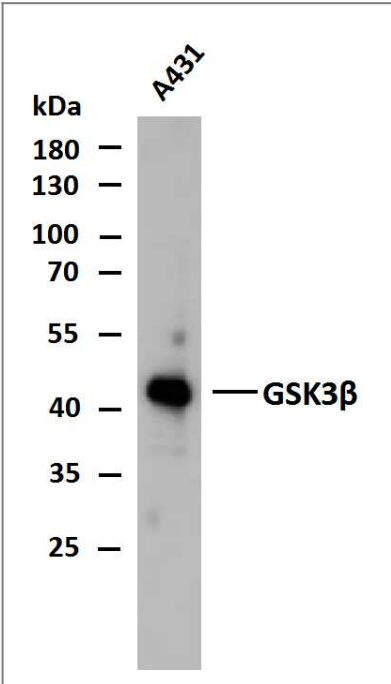
Protein Name GSK3B

Organism	Gene ID	UniProt ID
Human	2932 ;	P49841 ;
Mouse		Q9WV60 ;
Rat		P18266 ;

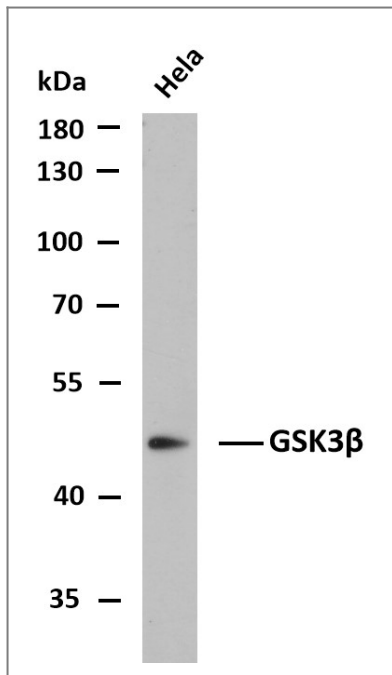
Tissue specificity Expressed in testis, thymus, prostate and ovary and weakly expressed in lung, brain and kidney. Colocalizes with EIF2AK2/PKR and TAU in the Alzheimer disease (AD) brain.

Function Catalytic activity:ATP + [tau protein] = ADP + [tau protein] phosphate.,enzyme regulation:Inhibited when phosphorylated by AKT1.,Function:Participates in the Wnt signaling pathway. Implicated in the hormonal control of several regulatory proteins including glycogen synthase, MYB and the transcription factor JUN. Phosphorylates JUN at sites proximal to its DNA-binding domain, thereby reducing its affinity for DNA. Phosphorylates MUC1 in breast cancer cells, and decreases the interaction of MUC1 with CTNNB1/beta-catenin.,PTM:Phosphorylated by AKT1 and ILK1.,similarity:Belongs to the protein kinase superfamily.,similarity:Belongs to the protein kinase superfamily. CMGC Ser/Thr protein kinase family. GSK-3 subfamily.,similarity:Contains 1 protein kinase domain.,subunit:Monomer (By similarity). Interacts with CABYR, MUC1, NIN and PRUNE.,tissue specificity:Expressed in testis, thymus, prostate and ovary and weakly expressed in lung, brain and kidney.,

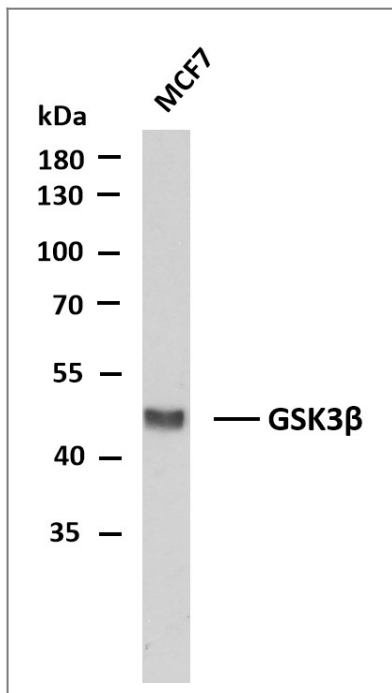
Validation Data



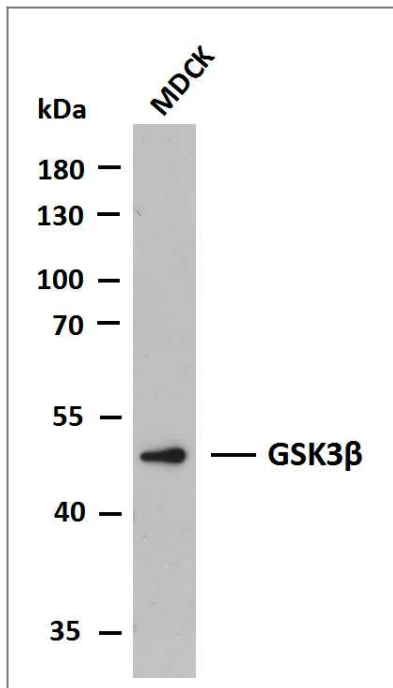
Whole cell lysates of A431 were separated by 10% SDS-PAGE, and the membrane was blotted with anti-GSK3 β antibody. The HRP-conjugated Goat anti-Mouse IgG(H + L) antibody was used to detect the antibody. Lane 1: A431



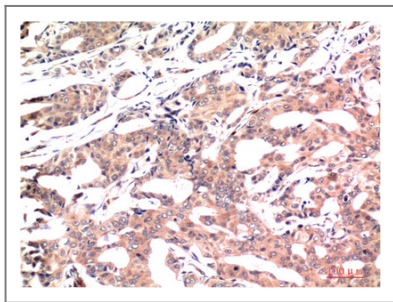
Whole cell lysates of HeLa were separated by 10% SDS-PAGE, and the membrane was blotted with anti-GSK3 β antibody. The HRP-conjugated Goat anti-Mouse IgG(H + L) antibody was used to detect the antibody. Lane 1: HeLa



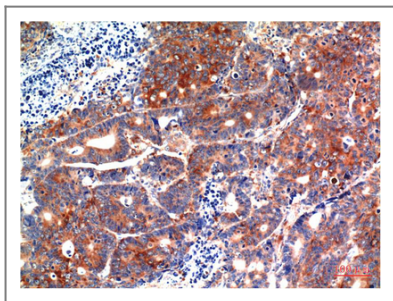
Whole cell lysates of MCF7 were separated by 10% SDS-PAGE, and the membrane was blotted with anti-GSK3 β antibody. The HRP-conjugated Goat anti-Mouse IgG(H + L) antibody was used to detect the antibody. Lane 1: MCF7



Whole cell lysates of MDCK were separated by 10% SDS-PAGE, and the membrane was blotted with anti-GSK3 β antibody. The HRP-conjugated Goat anti-Mouse IgG(H + L) antibody was used to detect the antibody. Lane 1: MDCK



Immunohistochemical analysis of paraffin-embedded Human Breast Carcinoma Tissue using GSK3 β Mouse mAb diluted at 1:200.



Immunohistochemical analysis of paraffin-embedded Human Stomach Carcinoma Tissue using GSK3 β Mouse mAb diluted at 1:200.

Contact information

Orders: order@immunoway.com
 Support: tech@immunoway.com
 Telephone: 877-594-3616 (Toll Free), 408-747-0185
 Website: <http://www.immunoway.com>
 Address: 2200 Ringwood Ave San Jose, CA 95131 USA



Please scan the QR code to access additional product information:
GSK3 β (PTR2553)
Mouse mAb