

Bax (PTR1159) Mouse mAb

CatalogNo: YM3619

Orthogonal Validated 

Key Features

Host Species

- Mouse

Reactivity

- Human,

Applications

- WB,IF,ELISA

MW

- 21kD (Calculated)
- 21kD (Observed)

Isotype

- IgG1,Kappa

Recommended Dilution Ratios

WB 1:500-2000**IF 1:100-500****ELISA 1:1000-5000**

Storage

Storage*

-15°C to -25°C/1 year(Do not lower than -25°C)

Formulation

PBS, 50% glycerol, 0.05% Proclin 300, 0.05%BSA

Basic Information

Clonality

Monoclonal

Clone Number

PTR1159

Immunogen Information

Immunogen

Synthesized peptide derived from human Bax AA range: 50-150

Specificity

This antibody detects endogenous levels of bax.

| Target Information

Gene name BAX

Protein Name BAX

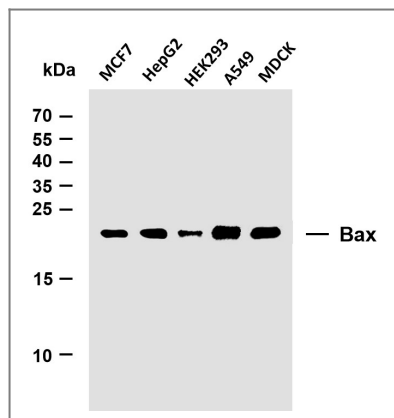
Organism	Gene ID	UniProt ID
Human	581 ;	Q07812 ;

Cellular Localization Cytoplasmic

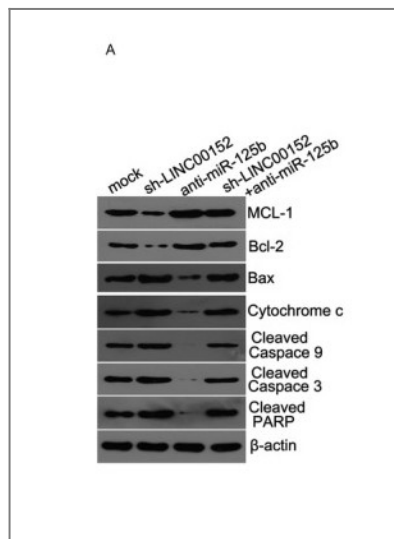
Tissue specificity Expressed in a wide variety of tissues. Isoform Psi is found in glial tumors. Isoform Alpha is expressed in spleen, breast, ovary, testis, colon and brain, and at low levels in skin and lung. Isoform Sigma is expressed in spleen, breast, ovary, testis, lung, colon, brain and at low levels in skin. Isoform Alpha and isoform Sigma are expressed in pro-myelocytic leukemia, histiocytic lymphoma, Burkitt's lymphoma, T-cell lymphoma, lymphoblastic leukemia, breast adenocarcinoma, ovary adenocarcinoma, prostate carcinoma, prostate adenocarcinoma, lung carcinoma, epidermoid carcinoma, small cell lung carcinoma and colon adenocarcinoma cell lines.

Function Disease:Defects in BAX are found in some cell lines from hematopoietic malignancies as T-cell acute lymphoblastic leukemia, Burkitt lymphoma, and plasmacytoma.,Domain:Intact BH3 motif is required by BIK, BID, BAK, BAD and BAX for their pro-apoptotic activity and for their interaction with anti-apoptotic members of the Bcl-2 family.,Function:Accelerates programmed cell death by binding to, and antagonizing the apoptosis repressor BCL2 or its adenovirus homolog E1B 19k protein. Induces the release of cytochrome c, activation of CASP3, and thereby apoptosis.,similarity:Belongs to the Bcl-2 family.,subcellular location:Colocalizes with 14-3-3 proteins in the cytoplasm. Under stress conditions, redistributes to the mitochondrion membrane through the release from JNK-phosphorylated 14-3-3 proteins.,subunit:Homodimer. Forms heterodimers with BCL2, E1B 19K protein, BCL2L1 isoform Bcl-X(L), MCL1 and A1. Interacts with SH3GLB1 and HN. Interacts with SFN and YWHAZ; the interaction occurs in the cytoplasm. Under stress conditions, JNK-mediated phosphorylation of SFN and YWHAZ, releases BAX to mitochondria. Isoform Sigma interacts with BCL2A1 and BCL2L1 isoform Bcl-X(L).,tissue specificity:Expressed in a wide variety of tissues. Isoform Psi is found in glial tumors. Isoform Alpha is expressed in spleen, breast, ovary, testis, colon and brain, and at low levels in skin and lung. Isoform Sigma is expressed in spleen, breast, ovary, testis, lung, colon, brain and at low levels in skin. Isoform Alpha and isoform Sigma are expressed in pro-myelocytic leukemia, histyocytic lymphoma, Burkitt's lymphoma, T-cell lymphoma, lymphoblastic leukemia, breast adenocarcinoma, ovary adenocarcinoma, prostate carcinoma, prostate adenocarcinoma, lung carcinoma, epidermoid carcinoma, small cell lung carcinoma and colon adenocarcinoma cell lines.,

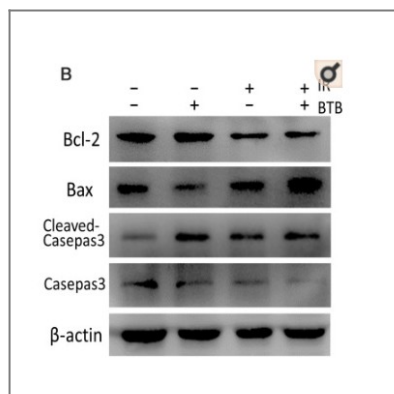
| Validation Data



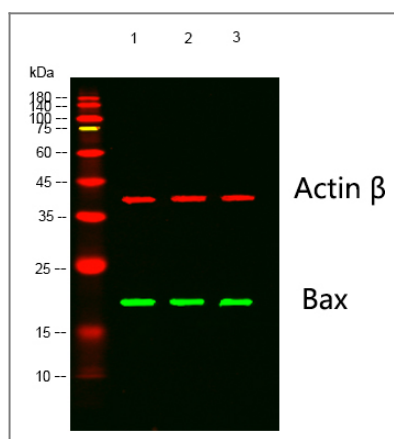
Various whole cell lysates were separated by 15% SDS-PAGE, and the membrane was blotted with anti-Bax (PTR1159) antibody. The HRP-conjugated Goat anti-Mouse IgG(H + L) antibody was used to detect the antibody. Lane 1: MCF7 Lane 2: HepG2 Lane 3: HEK293 Lane 4: A549 Lane 5: MDCK



Chen, Puxiang, et al. "Long noncoding RNA LINC00152 promotes cell proliferation through competitively binding endogenous miR-125b with MCL-1 by regulating mitochondrial apoptosis pathways in ovarian cancer." *Cancer medicine* 7.9 (2018): 4530-4541.



Wang, Yupei, et al. "Selective ATP hydrolysis inhibition in F1Fo ATP synthase enhances radiosensitivity in non-small-cell lung cancer cells (A549)." *Oncotarget* 8.32 (2017): 53602.



Western blot analysis of lysates from 1) HeLa Cell Lysate, 2) C2C12 Cell Lysate, 3) PC12 Cell Lysate cells, (Green) primary antibody was diluted at 1:1000, 4° over night, Dylight 800 secondary antibody (Immunoway:RS23910) was diluted at 1:10000, 37° 1 hour. (Red) Actin β Polyclonal Antibody (Immunoway:YT0099) antibody was diluted at 1:5000 as loading control, 4° over night, Dylight 680 secondary antibody (Immunoway:RS23720) was diluted at 1:10000, 37° 1 hour.

| Contact information

Orders: order@immunoway.com
Support: tech@immunoway.com
Telephone: 877-594-3616 (Toll Free), 408-747-0185
Website: <http://www.immunoway.com>
Address: 2200 Ringwood Ave San Jose, CA 95131 USA



Please scan the QR code
to access additional
product information:
Bax (PTR1159)
Mouse mAb

For Research Use Only. Not for Use in Diagnostic Procedures.

[Antibody](#) | [ELISA Kits](#) | [Protein](#) | [Reagents](#)