

## Tubulin $\alpha$ (Acetyl Lys40) (5H5) Mouse mAb

CatalogNo: YM3585

Orthogonal Validated 

### Key Features

#### Host Species

- Mouse

#### Reactivity

- Human,Rat,Mouse

#### Applications

- WB,IHC,IF

#### MW

- 52kD (Observed)

### Recommended Dilution Ratios

WB 1:1000-2000

IHC 1:100-200

IF 1:50-200

### Storage

#### Storage\*

-15°C to -25°C/1 year(Do not lower than -25°C)

#### Formulation

Liquid in PBS containing 50% glycerol, 0.5% BSA and 0.02% sodium azide.

### Basic Information

#### Clonality

Monoclonal

#### Clone Number

5H5

### Immunogen Information

#### Immunogen

Synthetic Peptide of  $\alpha$ -tubulin (Acetyl Lys40)

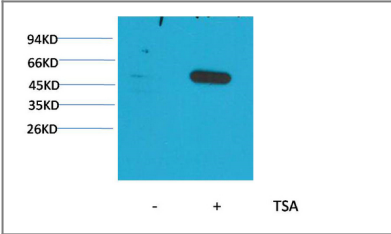
#### Specificity

 $\alpha$ -tubulin (Acetyl Lys40) protein detects endogenous levels of  $\alpha$ -tubulin (Acetyl Lys40)

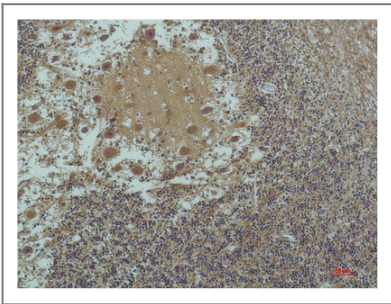
### Target Information

<b>Gene name</b>	TUBA1B		
<b>Protein Name</b>	Tubulin alpha-1B chain (Alpha-tubulin ubiquitous) (Tubulin K-alpha-1) (Tubulin alpha-ubiquitous chain)		
	<b>Organism</b>	<b>Gene ID</b>	<b>UniProt ID</b>
	Human	<a href="#">7277</a> ;	<a href="#">P68363</a> ;
	Mouse		<a href="#">P05213</a> ;
	Rat		<a href="#">Q6P9V9</a> ;
<b>Cellular Localization</b>	Cytoplasm, cytoskeleton.		
<b>Tissue specificity</b>	Brain,Cajal-Retzius cell,Colon,Embryonic kidney,Eye,Fetal brain cortex,Keratinocyte		
<b>Function</b>	Function:Tubulin is the major constituent of microtubules. It binds two moles of GTP, one at an exchangeable site on the beta chain and one at a non-exchangeable site on the alpha-chain.,PTM:Undergoes a tyrosination/detyrosination cycle, the cyclic removal and re-addition of a C-terminal tyrosine residue by the enzymes tubulin tyrosine carboxypeptidase (TTCP) and tubulin tyrosine ligase (TTL), respectively.,similarity:Belongs to the tubulin family.,subunit:Dimer of alpha and beta chains.,		

| Validation Data



Western blot analysis of extracts from HeLa cells, untreated (-) or treated with TSA (1µM, 18 hr; +), using Acetyl- α-tubulin(Lys40) Mouse mAb 1:2000.



Immunohistochemical analysis of paraffin-embedded Human Brain Tissue using α-tubulin(Acetyl Lys40) Mouse mAb diluted at 1:200.

| Contact information

Orders: order@immunoway.com  
Support: tech@immunoway.com  
Telephone: 877-594-3616 (Toll Free), 408-747-0185  
Website: http://www.immunoway.com  
Address: 2200 Ringwood Ave San Jose, CA 95131 USA



Please scan the QR code  
to access additional  
product information:  
**Tubulin  $\alpha$  (Acetyl  
Lys40) (5H5) Mouse  
mAb**

---

For Research Use Only. Not for Use in Diagnostic Procedures.

[Antibody](#) | [ELISA Kits](#) | [Protein](#) | [Reagents](#)