

Pan Methylated Lysine (Mix) Mouse mAb

CatalogNo: YM3429

Key Features

Host Species

- Mouse

Reactivity

- Species independent

Applications

- WB,IHC,IF

Storage

Storage* -15°C to -25°C/1 year(Do not lower than -25°C)

Formulation PBS, pH 7.4, containing 0.5%BSA, 0.02% sodium azide as Preservative and 50% Glycerol.

Recommended Dilution Ratios

WB 1:1000-2000

IHC 1:200-500

IF 1:50-200

Basic Information

Clonality Monoclonal

Clone Number 14F1

Immunogen Information

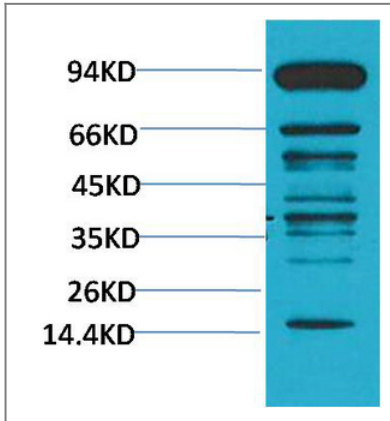
Immunogen Conjugated Protein

Specificity The antibody detects endogenous Pan Methylated Lysine protein.

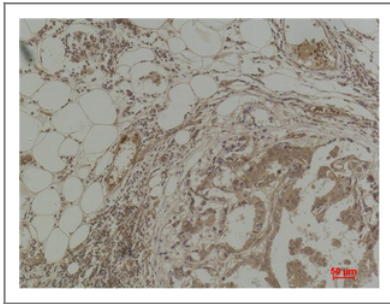
Target Information

Protein Name

Validation Data



Western blot analysis of Hela using Pan Methylated Lysine Monoclonal Antibody.



Immunohistochemical analysis of paraffin-embedded Human Breast Carcinoma using Pan Methylated Lysine Monoclonal Antibody.

Contact information

Orders: order@immunoway.com
Support: tech@immunoway.com
Telephone: 877-594-3616 (Toll Free), 408-747-0185
Website: <http://www.immunoway.com>
Address: 2200 Ringwood Ave San Jose, CA 95131 USA



Please scan the QR code to access additional product information:
Pan Methylated Lysine (Mix) Mouse mAb

For Research Use Only. Not for Use in Diagnostic Procedures.

[Antibody](#) | [ELISA Kits](#) | [Protein](#) | [Reagents](#)