

CREB1 (PTR2317) Mouse mAb

CatalogNo: YM3428

Key Features

Host Species

- Mouse

Reactivity

- Human, Mouse, Rat,

Applications

- WB, IF, ELISA

MW

- 36kD (Calculated)
45kD (Observed)

Isotype

- IgG1, Kappa

Recommended Dilution Ratios

WB 1:500-2000

IF 1:100-500

ELISA 1:1000-5000

Storage

Storage* -15°C to -25°C/1 year(Do not lower than -25°C)

Formulation PBS, 50% glycerol, 0.05% Proclin 300, 0.05%BSA

Basic Information

Clonality Monoclonal

Clone Number PTR2317

Immunogen Information

Immunogen Recombinant Protein of human CREB-1 AA range: 100-200

Specificity This antibody detects endogenous levels of CREB1 protein.

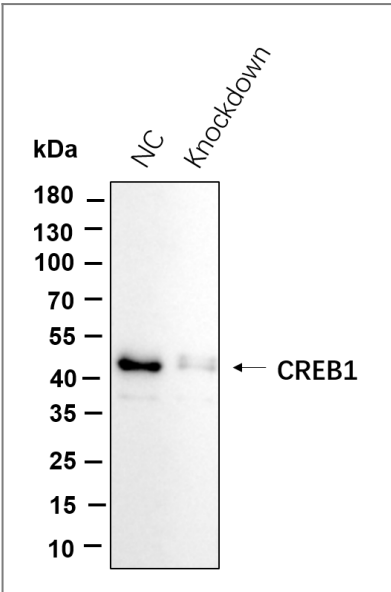
Target Information

Gene name	CREB1		
Protein Name	Cyclic AMP-responsive element-binding protein 1		
	Organism	Gene ID	UniProt ID
	Human	1385 ;	P16220 ;
	Mouse		Q01147 ;

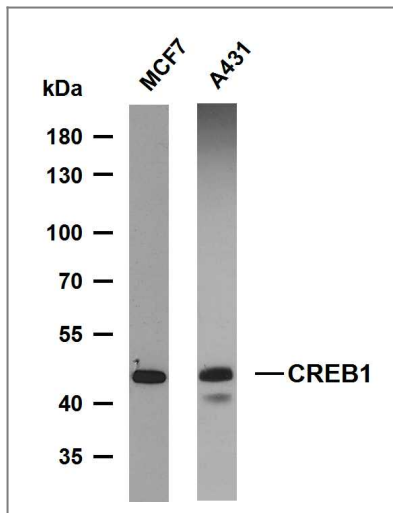
Tissue specificity Eye,Placenta,Spleen,Testis,

Function Disease:A chromosomal aberration involving CREB1 is associated with angiomatoid fibrous histiocytoma (AFH) [MIM:612160]. Translocation t(2;22)(q33;q12) with CREB1 generates a EWSR1/CREB1 fusion gene that is most common genetic abnormality in this tumor type.,Function:This protein binds the cAMP response element (CRE), a sequence present in many viral and cellular promoters. CREB stimulates transcription on binding to the CRE. Transcription activation is enhanced by the TORC coactivators which act independently of Ser-133 phosphorylation. Implicated in synchronization of circadian rhythmicity.,PTM:Stimulated by phosphorylation. Phosphorylation of both Ser-133 and Ser-142 in the SCN regulates the activity of CREB and participates in circadian rhythm generation. Phosphorylation of Ser-133 allows CREBBP binding (By similarity). Phosphorylated upon DNA damage, probably by ATM or ATR.,similarity:Belongs to the bZIP family.,similarity:Contains 1 bZIP domain.,similarity:Contains 1 KID (kinase-inducible) domain.,subunit:Interacts with PPRC1. Binds DNA as a dimer. This dimer is stabilized by magnesium ions. Interacts, through the bZIP domain, with the coactivators TORC1/CRTC1, TORC2/CRTC2 and TORC3/CRTC3. When phosphorylated on Ser-133, binds CREBBP.,

Validation Data



Western blot analysis of lysates from HeLa WT and shRNA treated



Various whole cell lysates were separated by 10% SDS-PAGE, and the membrane was blotted with anti-CREB1(PTR2317) antibody. The HRP-conjugated Goat anti-Mouse IgG(H + L) antibody was used to detect the antibody. Lane 1: MCF7 Lane 2: A431

Contact information

Orders: order@immunoway.com
 Support: tech@immunoway.com
 Telephone: 877-594-3616 (Toll Free), 408-747-0185
 Website: <http://www.immunoway.com>
 Address: 2200 Ringwood Ave San Jose, CA 95131 USA



Please scan the QR code to access additional product information:
CREB1 (PTR2317)
Mouse mAb

For Research Use Only. Not for Use in Diagnostic Procedures.

[Antibody](#) | [ELISA Kits](#) | [Protein](#) | [Reagents](#)