

## $\beta$ II tubulin (Mix) Mouse mAb

CatalogNo: YM3151

**Comparable Abs** 

### Key Features

**Host Species**

- Mouse

**Reactivity**

- Human, Mouse, Rat,

**Applications**

- WB, IHC, IF, IP

**MW**

- 50kD (Observed)

### Recommended Dilution Ratios

**WB 1:50000-100000****IP 1:200****IHC 1:50-300****IF 1:50-200**

### Storage

**Storage\*** -15°C to -25°C/1 year(Do not lower than -25°C)**Formulation** PBS, pH 7.4, containing 0.5%BSA, 0.02% sodium azide as Preservative and 50% Glycerol.

### Basic Information

**Clonality** Monoclonal

### Immunogen Information

**Immunogen** Synthetic Peptide of  $\beta$  II tubulin**Specificity** The antibody detects endogenous  $\beta$  II tubulin protein.

### Target Information

**Gene name** TUBB2A

**Protein Name** Tubulin beta-2A chain

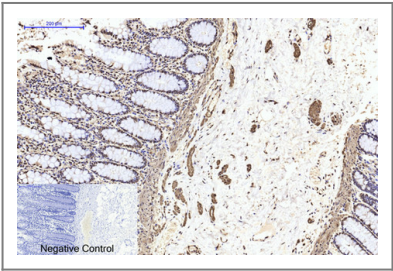
Organism	Gene ID	UniProt ID
Human	<a href="#">7280</a> ;	<a href="#">Q13885</a> ;
Mouse	<a href="#">22151</a> ;	<a href="#">Q7TMM9</a> ;
Rat	<a href="#">498736</a> ;	<a href="#">P85108</a> ;

**Cellular Localization** Cytoplasm, cytoskeleton .

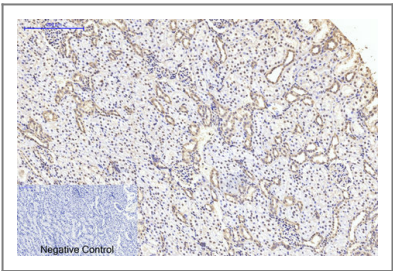
**Tissue specificity** High expression in brain, where it represents 30% of all beta-tubulins.

**Function** Function:Tubulin is the major constituent of microtubules. It binds two moles of GTP, one at an exchangeable site on the beta chain and one at a non-exchangeable site on the alpha-chain.,similarity:Belongs to the tubulin family.,subunit:Dimer of alpha and beta chains.,

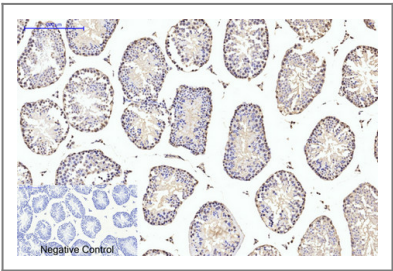
## Validation Data



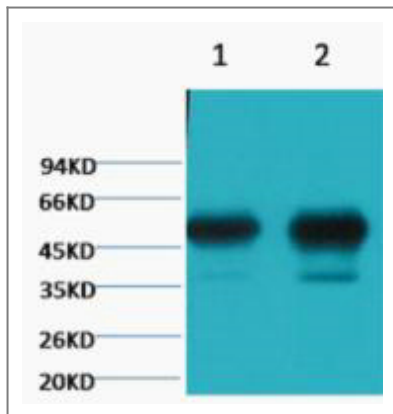
Immunohistochemical analysis of paraffin-embedded Human-colon tissue. 1, $\beta$  II tubulin Monoclonal Antibody(Mix) was diluted at 1:200(4°C,overnight). 2, Sodium citrate pH 6.0 was used for antibody retrieval(>98°C,20min). 3,Secondary antibody was diluted at 1:200(room tempeRature, 30min). Negative control was used by secondary antibody only.



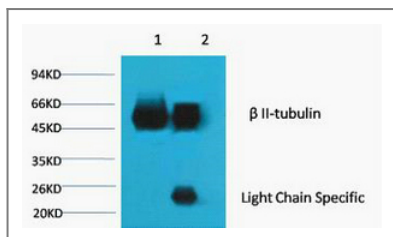
Immunohistochemical analysis of paraffin-embedded Rat-kidney tissue. 1, $\beta$  II tubulin Monoclonal Antibody(Mix) was diluted at 1:200(4°C,overnight). 2, Sodium citrate pH 6.0 was used for antibody retrieval(>98°C,20min). 3,Secondary antibody was diluted at 1:200(room tempeRature, 30min). Negative control was used by secondary antibody only.



Immunohistochemical analysis of paraffin-embedded Mouse-testis tissue. 1, $\beta$  II tubulin Monoclonal Antibody(Mix) was diluted at 1:200(4°C,overnight). 2, Sodium citrate pH 6.0 was used for antibody retrieval(>98°C,20min). 3,Secondary antibody was diluted at 1:200(room tempeRature, 30min). Negative control was used by secondary antibody only.



Western blot analysis of 1) Mouse Brain tissue, 2) Rat Brain tissue, diluted at 1:100000.



1) Input: Mouse Brain Tissue Lysate 2) IP product: IP dilute 1: 200 Western blot analysis: primary antibody : TDY191 1: 10000 Secondary antibody: Goat anti-Mouse IgG, Light chain specific (S003), 1: 5000

## Contact information

Orders: [order@immunoway.com](mailto:order@immunoway.com)  
 Support: [tech@immunoway.com](mailto:tech@immunoway.com)  
 Telephone: 877-594-3616 (Toll Free), 408-747-0185  
 Website: <http://www.immunoway.com>  
 Address: 2200 Ringwood Ave San Jose, CA 95131 USA



Please scan the QR code to access additional product information:  
**β II tubulin (Mix)**  
**Mouse mAb**

For Research Use Only. Not for Use in Diagnostic Procedures.

[Antibody](#) | [ELISA Kits](#) | [Protein](#) | [Reagents](#)