

CD16 (Q32) Mouse mAb

CatalogNo: YM3090

Orthogonal Validated 

Key Features

Host Species

- Mouse

Reactivity

- Human

Applications

- WB,IHC,IF,

MW

- 45kD (Observed)

Recommended Dilution Ratios

WB 1:1000

IHC 1:50-300

IF 1:50-200

Storage

Storage* -15°C to -25°C/1 year(Do not lower than -25°C)**Formulation** PBS, pH 7.4, containing 0.5%BSA, 0.02% sodium azide as Preservative and 50% Glycerol.

Basic Information

Clonality Monoclonal**Clone Number** Q32

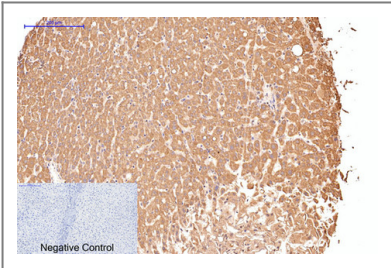
Immunogen Information

Immunogen Synthetic Peptide of CD16**Specificity** The antibody detects endogenous CD16 protein.

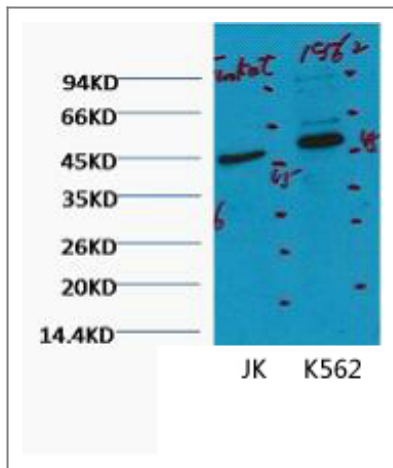
Target Information

Gene name	FCGR3A/FCGR3B		
Protein Name	Low affinity immunoglobulin gamma Fc region receptor III-A/Low affinity immunoglobulin gamma Fc region receptor III-B		
	Organism	Gene ID	UniProt ID
	Human	2214 ; 2215 ;	P08637 ; O75015 ;
Cellular Localization	Cell membrane ; Single-pass type I membrane protein . Secreted . Exists also as a soluble receptor. .		
Tissue specificity	Expressed in natural killer cells (at protein level) (PubMed:2526846). Expressed in a subset of circulating monocytes (at protein level) (PubMed:27670158).		
Function	Function:Receptor for the Fc region of IgG. Binds complexed or aggregated IgG and also monomeric IgG. Mediates antibody-dependent cellular cytotoxicity (ADCC) and other antibody-dependent responses, such as phagocytosis.,miscellaneous:Encoded by one of two nearly identical genes: FCGR3A (Shown here) and FCGR3B which are expressed in a tissue-specific manner. The Phe-203 in III-A determines the transmembrane domains whereas the Ser-203 in III-B determines the GPI-anchoring.,online information:FCGR3A mutation db,polymorphism:Isoform Val-157 shows a higher binding capacity of IgG1, IgG3 and IgG4 compared with isoform Phe-157. Alleles Leu-66 and Phe-157, and alleles His-66 / Arg-66 and Val-157 are in linkage disequilibrium.,PTM:Glycosylated. Contains high mannose- and complex-type oligosaccharides.,PTM:The soluble form is produced by a proteolytic cleavage.,similarity:Contains 2 Ig-like C2-type (immunoglobulin-like) domains.,subcellular location:Exists also as a soluble receptor.,subunit:Exists as a hetero-oligomeric receptor complex with Fc epsilon receptor I gamma subunit and / or the CD3 zeta subunit. Interacts with INPP5D/SHIP1.,tissue specificity:Expressed on natural killer cells, macrophages, subpopulation of T-cells, immature thymocytes and placental trophoblasts.,		

Validation Data



Immunohistochemical analysis of paraffin-embedded Human-liver tissue.
 1,CD16 Monoclonal Antibody(Q32) was diluted at 1:200(4°C,overnight). 2, Sodium citrate pH 6.0 was used for antibody retrieval(>98°C,20min). 3,Secondary antibody was diluted at 1:200(room tempeRature, 30min). Negative control was used by secondary antibody only.



Western blot analysis of 1) Jurkat, 2) K562, diluted at 1:2000.

Contact information

Orders: order@immunoway.com
 Support: tech@immunoway.com
 Telephone: 877-594-3616 (Toll Free), 408-747-0185
 Website: <http://www.immunoway.com>
 Address: 2200 Ringwood Ave San Jose, CA 95131 USA



Please scan the QR code
 to access additional
 product information:
**CD16 (Q32) Mouse
 mAb**

For Research Use Only. Not for Use in Diagnostic Procedures.

[Antibody](#) | [ELISA Kits](#) | [Protein](#) | [Reagents](#)