

Oct1 (7G1) Mouse mAb

CatalogNo: YM3089

Key Features

Host Species

- Mouse

Reactivity

- Human

Applications

- WB,IHC,IF,

MW

- 89kD (Observed)

Recommended Dilution Ratios

WB 1:500-2000

IF 1:200

IHC 1:50-300

Storage

Storage* -15°C to -25°C/1 year(Do not lower than -25°C)

Formulation PBS, pH 7.4, containing 0.5%BSA, 0.02% sodium azide as Preservative and 50% Glycerol.

Basic Information

Clonality Monoclonal

Clone Number 7G1

Immunogen Information

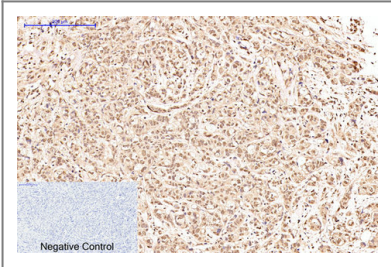
Immunogen Synthetic Peptide of 42644

Specificity The antibody detects endogenous Oct1 protein.

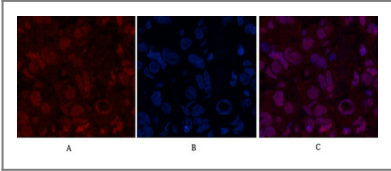
Target Information

Gene name	POU2F1		
Protein Name	POU domain class 2 transcription factor		
	Organism	Gene ID	UniProt ID
	Human	5451 ; 5452 ;	P14859 ; P09086 ;
	Mouse	18986 ; 18987 ;	
	Rat	171068 ;	P31503 ;
Cellular Localization	Nucleus.		
Tissue specificity	Ubiquitous. Isoform 2 is lymphocyte-specific.		
Function	Function:Transcription factor that binds to the octamer motif (5'-ATTGTCAT-3') and activates the promoters of the genes for some small nuclear RNAs (snRNA) and of genes such as those for histone H2B and immunoglobulins. Modulates transcription transactivation by NR3C1, AR and PGR.,PTM:Phosphorylated by PRKDC.,similarity:Belongs to the POU transcription factor family. Class-2 subfamily.,similarity:Contains 1 homeobox DNA-binding domain.,similarity:Contains 1 POU-specific domain.,subunit:Interacts with NR3C1, AR, PGR and HCFC1.,tissue specificity:Ubiquitous. Isoform 2 is lymphocyte-specific.,		

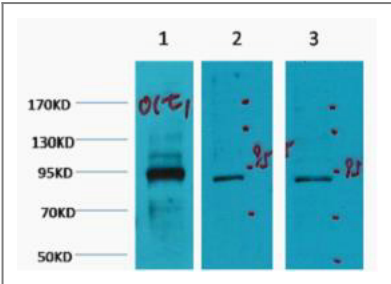
| Validation Data



Immunohistochemical analysis of paraffin-embedded Human-breast-cancer tissue. 1,Oct1 Monoclonal Antibody(7G1) was diluted at 1:200(4°C,overnight). 2, Sodium citrate pH 6.0 was used for antibody retrieval(>98°C,20min). 3,Secondary antibody was diluted at 1:200(room tempeRature, 30min). Negative control was used by secondary antibody only.



Immunofluorescence analysis of Human-breast-cancer tissue. 1,Oct1 Monoclonal Antibody(7G1)(red) was diluted at 1:200(4°C,overnight). 2, Cy3 labled Secondary antibody was diluted at 1:300(room temperature, 50min).3, Picture B: DAPI(blue) 10min. Picture A:Target. Picture B: DAPI. Picture C: merge of A+B



Western blot analysis of 1) Hela, 2) Jurkat, 3) HepG2, diluted at 1:2000 cells nucleus extracted by Minute TM Cytoplasmic and Nuclear Fractionation kit (SC-003,Inventbiotech,MN,USA).

| Contact information

Orders: order@immunoway.com
Support: tech@immunoway.com
Telephone: 877-594-3616 (Toll Free), 408-747-0185
Website: <http://www.immunoway.com>
Address: 2200 Ringwood Ave San Jose, CA 95131 USA



Please scan the QR code
to access additional
product information:
**Oct1 (7G1) Mouse
mAb**

For Research Use Only. Not for Use in Diagnostic Procedures.

[Antibody](#) | [ELISA Kits](#) | [Protein](#) | [Reagents](#)