

XRCC4 (5C10) Mouse mAb

CatalogNo: YM3086

Comparable Abs 

Key Features

Host Species

- Mouse

Reactivity

- Human

Applications

- WB,IHC,IF,IP

MW

- 38kD (Observed)

Recommended Dilution Ratios

WB 1:2000**IP 1:200****IF 1:200****IHC 1:50-300**

Storage

Storage* -15°C to -25°C/1 year(Do not lower than -25°C)**Formulation** PBS, pH 7.4, containing 0.5%BSA, 0.02% sodium azide as Preservative and 50% Glycerol.

Basic Information

Clonality Monoclonal**Clone Number** 5C10

Immunogen Information

Immunogen Synthetic Peptide of XRCC4**Specificity** The antibody detects endogenous XRCC4 proteins.

Target Information

Gene name XRCC4

Protein Name DNA repair protein XRCC4

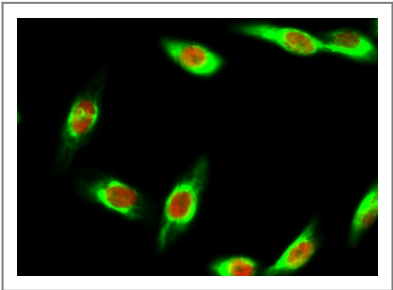
Organism	Gene ID	UniProt ID
Human	7518 ;	Q13426 ;
Mouse	108138 ;	Q924T3 ;

Cellular Localization Nucleus . Chromosome . Localizes to site of double-strand breaks. . ; [Protein XRCC4, C-terminus]: Cytoplasm . Translocates from the nucleus to the cytoplasm following cleavage by caspase-3 (CASP3). .

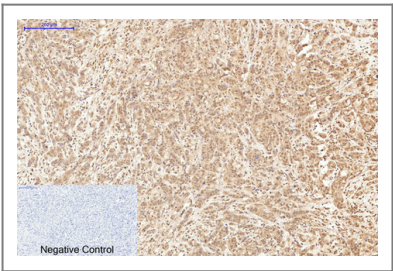
Tissue specificity Widely expressed.

Function Function:Involved in DNA non-homologous end joining (NHEJ) required for double-strand break repair and V(D)J recombination. Binds to DNA and to DNA ligase IV (LIG4). The LIG4-XRCC4 complex is responsible for the NHEJ ligation step, and XRCC4 enhances the joining activity of LIG4. Binding of the LIG4-XRCC4 complex to DNA ends is dependent on the assembly of the DNA-dependent protein kinase complex DNA-PK to these DNA ends.,PTM:Monoubiquitinated.,PTM:Phosphorylated by PRKDC. The phosphorylation seems not to be necessary for binding to DNA. Phosphorylation by CK2 promotes interaction with APTX.,PTM:Sumoylation at Lys-210 is required for nuclear localization and recombination efficiency. Has no effect on ubiquitination.,similarity:Belongs to the XRCC4 family.,subunit:Homodimer and homotetramer in solution. The homodimer associates with LIG4, and the LIG4-XRCC4 complex associates in a DNA-dependent manner with the DNA-PK complex formed by the Ku p70/p86 dimer (G22P1/G22P2) and PRKDC. Seems to interact directly with PRKDC but not with the Ku p70/86 dimer. Interacts with XLF/Cernunnos. Interacts with APTX and APLF.,tissue specificity:Widely expressed.,

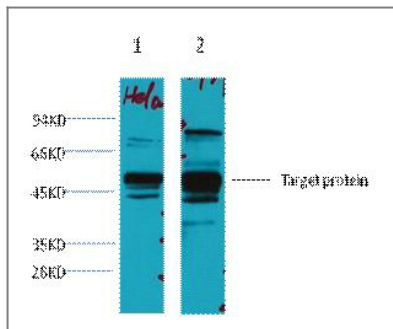
Validation Data



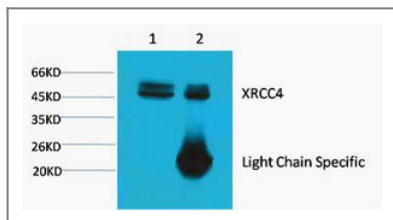
Immunofluorescence analysis of Hela cell. 1,Bak Polyclonal Antibody(green) was diluted at 1:200(4° overnight). (red) was diluted at 1:200(4° overnight). 2, Goat Anti Rabbit Alexa Fluor 488 Catalog:RS3211 was diluted at 1:1000(room temperature, 50min). Goat Anti Mouse Alexa Fluor 594 Catalog:RS3608 was diluted at 1:1000(room temperature, 50min).



Immunohistochemical analysis of paraffin-embedded Human-breast-cancer tissue. 1,XRCC4 Monoclonal Antibody(5C10) was diluted at 1:200(4°C,overnight). 2, Sodium citrate pH 6.0 was used for antibody retrieval(>98°C,20min). 3,Secondary antibody was diluted at 1:200(room temperature, 30min). Negative control was used by secondary antibody only.



Western blot analysis of 1) HeLa, 2) 293T, diluted at 1:3000.



1) Input: HeLa Cell Lysate 2) IP product: IP dilute 1:200

Contact information

Orders: order@immunoway.com
 Support: tech@immunoway.com
 Telephone: 877-594-3616 (Toll Free), 408-747-0185
 Website: <http://www.immunoway.com>
 Address: 2200 Ringwood Ave San Jose, CA 95131 USA



Please scan the QR code
 to access additional
 product information:
XRCC4 (5C10)
Mouse mAb

For Research Use Only. Not for Use in Diagnostic Procedures.

[Antibody](#) | [ELISA Kits](#) | [Protein](#) | [Reagents](#)