

## Caspase 9 (3-20) Mouse mAb

CatalogNo: YM3077

Orthogonal Validated Comparable Abs 

### Key Features

#### Host Species

- Mouse

#### Reactivity

- Human, Mouse, Rat, Chicken

#### Applications

- WB, IHC, IF, IP

#### MW

- 46kD (Observed)

### Recommended Dilution Ratios

WB 1:1000-5000

IP 1:200

IF 1:200

IHC 1:50-300

### Storage

**Storage\*** -15°C to -25°C/1 year(Do not lower than -25°C)**Formulation** PBS, pH 7.4, containing 0.5%BSA, 0.02% sodium azide as Preservative and 50% Glycerol.

### Basic Information

**Clonality** Monoclonal**Clone Number** 3-20

### Immunogen Information

**Immunogen** Synthetic Peptide of Caspase 9**Specificity** The antibody detects endogenous Caspase 9 protein.

## Target Information

**Gene name** CASP9

**Protein Name** Caspase9

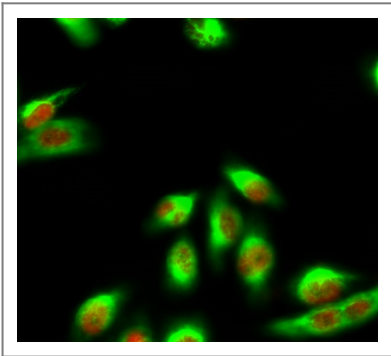
Organism	Gene ID	UniProt ID
Human	<a href="#">842</a> ;	<a href="#">P55211</a> ;

**Cellular Localization** nucleus,mitochondrion,cytosol,apoptosome,

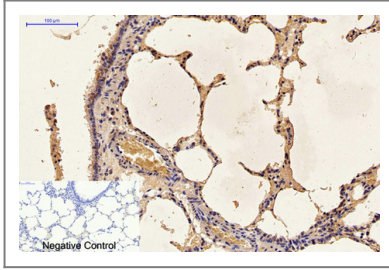
**Tissue specificity** Ubiquitous, with highest expression in the heart, moderate expression in liver, skeletal muscle, and pancreas. Low levels in all other tissues. Within the heart, specifically expressed in myocytes.

**Function** Catalytic activity:Strict requirement for an Asp residue at position P1 and with a marked preference for His at position P2. It has a preferred cleavage sequence of Leu-Gly-His-Asp-|-Xaa.,Function:Involved in the activation cascade of caspases responsible for apoptosis execution. Binding of caspase-9 to Apaf-1 leads to activation of the protease which then cleaves and activates caspase-3. Proteolytically cleaves poly(ADP-ribose) polymerase (PARP).,Function:Isoform 2 lacks activity is an dominant-negative inhibitor of caspase-9.,online information:Caspase-9 entry,PTM:Cleavages at Asp-315 by granzyme B and at Asp-330 by caspase-3 generate the two active subunits. Caspase-8 and -10 can also be involved in these processing events.,similarity:Belongs to the peptidase C14A family.,similarity:Contains 1 CARD domain.,subunit:Heterotetramer that consists of two anti-parallel arranged heterodimers, each one formed by a 35 kDa (p35) and a 10 kDa (p10) subunit. Caspase-9 and APAF1 bind to each other via their respective NH2-terminal CED-3 homologous domains in the presence of cytochrome C and ATP. Interacts with the inhibitors BIRC2, BIRC4, BIRC5 and BIRC7.,tissue specificity:Ubiquitous, with highest expression in the heart, moderate expression in liver, skeletal muscle, and pancreas. Low levels in all other tissues.,

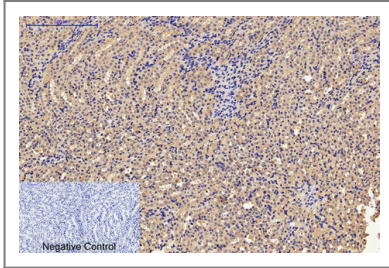
## Validation Data



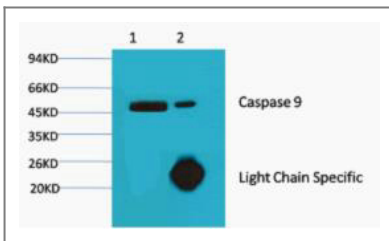
Immunofluorescence analysis of Hela cell. 1,eIF2α Polyclonal Antibody(red) was diluted at 1:200(4° overnight). Caspase 9 Monoclonal Antibody(3-20)(green) was diluted at 1:200(4° overnight). 2, Goat Anti Rabbit Alexa Fluor 594 Catalog:RS3611 was diluted at 1:1000(room temperature, 50min). Goat Anti Mouse Alexa Fluor 488 Catalog:RS3208 was diluted at 1:1000(room temperature, 50min).



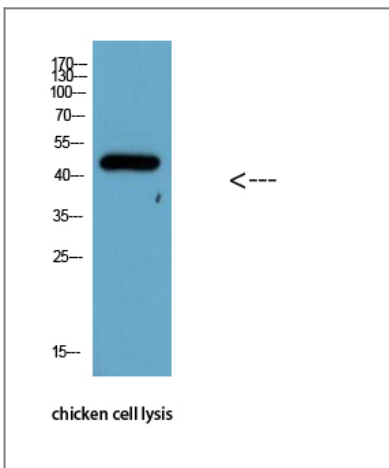
Immunohistochemical analysis of paraffin-embedded Rat-lung tissue.  
 1, Caspase 9 Monoclonal Antibody(3-20) was diluted at 1:200(4°C, overnight).  
 2, Sodium citrate pH 6.0 was used for antibody retrieval(>98°C, 20min).  
 3, Secondary antibody was diluted at 1:200(room temperature, 30min).  
 Negative control was used by secondary antibody only.



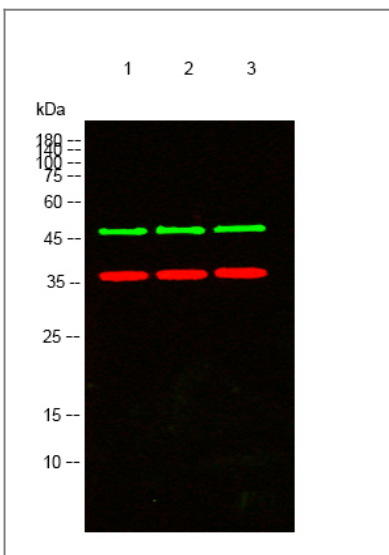
Immunohistochemical analysis of paraffin-embedded Mouse-kidney tissue.  
 1, Caspase 9 Monoclonal Antibody(3-20) was diluted at 1:200(4°C, overnight).  
 2, Sodium citrate pH 6.0 was used for antibody retrieval(>98°C, 20min).  
 3, Secondary antibody was diluted at 1:200(room temperature, 30min).  
 Negative control was used by secondary antibody only.



1) Input: Hela Cell Lysate 2) IP product: IP dilute 1:200



Western Blot analysis of chicken cell lysis using Antibody diluted at 1:1000



Western blot analysis of lysates from 1) Hela, 2) Jurkat, 3) 3T3 cells, (Green) primary antibody was diluted at 1:1000, 4° over night, secondary antibody(cat:RS23910) was diluted at 1:10000, 37° 1hour. (Red) GAPDH Polyclonal Antibody (cat:YM3215) antibody was diluted at 1:5000 as loading control, 4° over night, secondary antibody(cat:RS23720) was diluted at 1:10000, 37° 1hour.

## | Contact information

Orders: order@immunoway.com  
Support: tech@immunoway.com  
Telephone: 877-594-3616 (Toll Free), 408-747-0185  
Website: <http://www.immunoway.com>  
Address: 2200 Ringwood Ave San Jose, CA 95131 USA



Please scan the QR code  
to access additional  
product information:  
**Caspase 9 (3-20)**  
**Mouse mAb**

---

For Research Use Only. Not for Use in Diagnostic Procedures.

[Antibody](#) | [ELISA Kits](#) | [Protein](#) | [Reagents](#)