

CK19 (11F5) Mouse mAb

CatalogNo: YM3051

Orthogonal Validated 

Key Features

Host Species

- Mouse

Reactivity

- Human, Mouse, Rat

Applications

- IHC, IF

MW

- 44kD (Observed)

Recommended Dilution Ratios

IHC 1:200-400

IF/ICC 1:200-400

Storage

Storage*

-15°C to -25°C/1 year (Do not lower than -25°C)

Formulation

PBS, pH 7.4, containing 0.5% BSA, 0.02% sodium azide as Preservative and 50% Glycerol.

Basic Information

Clonality

Monoclonal

Clone Number

11F5

Immunogen Information

Immunogen

Synthetic Peptide of CK19

Specificity

The antibody detects endogenous CK19 proteins.

Target Information

Gene name KRT19

Protein Name Keratin type I cytoskeletal 19

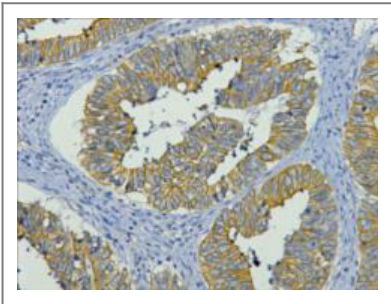
Organism	Gene ID	UniProt ID
Human	3880 ;	P08727 ;
Mouse	16669 ;	P19001 ;
Rat	360626 ;	Q63279 ;

Cellular Localization intermediate filament,plasma membrane,dystrophin-associated glycoprotein complex,Z disc,sarcolemma,costamere,extracellular exosome,cell periphery,terminal web,

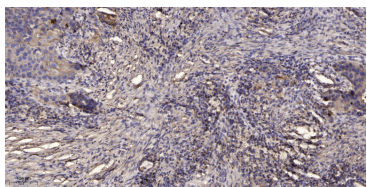
Tissue specificity Expressed in a defined zone of basal keratinocytes in the deep outer root sheath of hair follicles. Also observed in sweat gland and mammary gland ductal and secretory cells, bile ducts, gastrointestinal tract, bladder urothelium, oral epithelia, esophagus, ectocervical epithelium (at protein level). Expressed in epidermal basal cells, in nipple epidermis and a defined region of the hair follicle. Also seen in a subset of vascular wall cells in both the veins and artery of human umbilical cord, and in umbilical cord vascular smooth muscle. Observed in muscle fibers accumulating in the costameres of myoplasm at the sarcolemma in structures that contain dystrophin and spectrin.

Function developmental stage:Present in hair follicles at all stages of development.,Domain:This keratin differs from all other IF proteins in lacking the C-terminal tail domain.,Function:Involved in the organization of myofibers. Together with KRT8, helps to link the contractile apparatus to dystrophin at the costameres of striated muscle.,miscellaneous:There are two types of cytoskeletal and microfibrillar keratin: I (acidic; 40-55 kDa) and II (neutral to basic; 56-70 kDa).,similarity:Belongs to the intermediate filament family.,subunit:Heterotetramer of two type I and two type II keratins. Interacts with PNN and the actin-binding domain of DMD. Interacts with HCV core protein.,tissue specificity:Expressed in a defined zone of basal keratinocytes in the deep outer root sheath of hair follicles. Also observed in sweat gland and mammary gland ductal and secretory cells, bile ducts, gastrointestinal tract, bladder urothelium, oral epithelia, esophagus, ectocervical epithelium (at protein level). Expressed in epidermal basal cells, in nipple epidermis and a defined region of the hair follicle. Also seen in a subset of vascular wall cells in both the veins and artery of human umbilical cord, and in umbilical cord vascular smooth muscle. Observed in muscle fibers accumulating in the costameres of myoplasm at the sarcolemma in structures that contain dystrophin and spectrin.,

Validation Data



IHC staining of human colon cancer tissue, diluted at 1:200.



Immunohistochemical analysis of paraffin-embedded human Squamous cell carcinoma of lung. 1, Antibody was diluted at 1:200(4° overnight). 2, Tris-EDTA,pH9.0 was used for antigen retrieval. 3,Secondary antibody was diluted at 1:200(room temperature, 45min).

| Contact information

Orders: order@immunoway.com
Support: tech@immunoway.com
Telephone: 877-594-3616 (Toll Free), 408-747-0185
Website: <http://www.immunoway.com>
Address: 2200 Ringwood Ave San Jose, CA 95131 USA



Please scan the QR code to access additional product information:

CK19 (11F5) Mouse mAb

For Research Use Only. Not for Use in Diagnostic Procedures.

[Antibody](#) | [ELISA Kits](#) | [Protein](#) | [Reagents](#)