

Tubulin α (PT2182) Mouse mAb

CatalogNo: YM3035

Orthogonal Validated Comparable Abs 

Key Features

Host Species

- Mouse

Reactivity

- Human, Mouse, Rat,

Applications

- IHC, WB, IF, ELISA

MW

- 52kD (Calculated)
- 52kD (Observed)

Isotype

- IgG2b, Kappa

Recommended Dilution Ratios

IHC 1:200-1000

WB 1:1000-5000

IF 1:100-500

ELISA 1:5000-50000

Storage

Storage* -15°C to -25°C/1 year(Do not lower than -25°C)**Formulation** PBS, 50% glycerol, 0.05% Proclin 300, 0.05%BSA

Basic Information

Clonality Monoclonal**Clone Number** PT2182

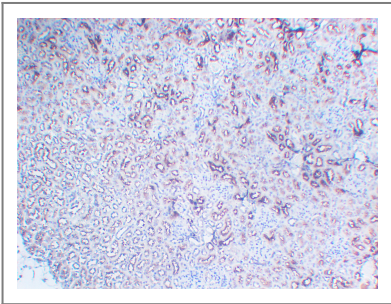
Immunogen Information

Immunogen Recombinant Protein of Tubulin alpha-1A chain. AA range: 350-451**Specificity** This antibody detects endogenous levels of Tubulin α protein.

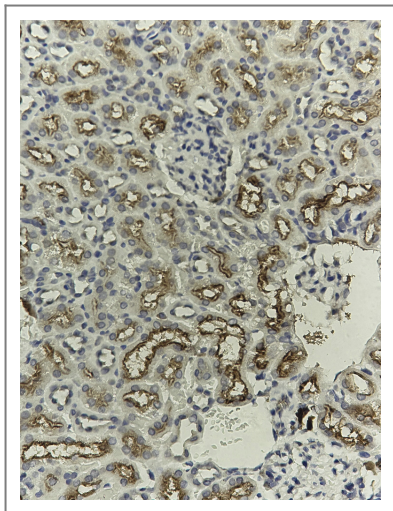
| Target Information

Gene name	TUBA1A		
Protein Name	Tubulin alpha-1A chain		
Organism	Gene ID	UniProt ID	
Human	7846 ; 10376 ;	Q71U36 ; P68363 ; Q9BQE3 ; P0DPH7 ; P0DPH8 ; Q6PEY2 ; P68366 ; Q9NY65 ;	
Mouse	22142 ; 22143 ;		
Rat	64158 ; 500929 ;	P68370 ; Q6P9V9 ;	
Cellular Localization	Cytoplasmic		
Tissue specificity	Expressed at a high level in fetal brain.		
Function	<p>Disease:Defects in TUBA1A are the cause of lissencephaly type 3 (LIS3) [MIM:611603]. LIS is characterized by a smooth brain surface due to the absence (agyria) or reduction (pachygyria) of surface convolutions. It is often associated with psychomotor retardation and seizures. LIS3 features include agyria or pachygyria or laminar heterotopia, severe mental retardation, motor delay, variable presence of seizures, and abnormalities of corpus callosum, hippocampus, cerebellar vermis and brainstem.,Function:Tubulin is the major constituent of microtubules. It binds two moles of GTP, one at an exchangeable site on the beta chain and one at a non-exchangeable site on the alpha-chain.,PTM:Undergoes a tyrosination/detyrosination cycle, the cyclic removal and re-addition of a C-terminal tyrosine residue by the enzymes tubulin tyrosine carboxypeptidase (TTCP) and tubulin tyrosine ligase (TTL), respectively.,similarity:Belongs to the tubulin family.,subunit:Dimer of alpha and beta chains.,tissue specificity:Expressed at a high level in fetal brain.,</p>		

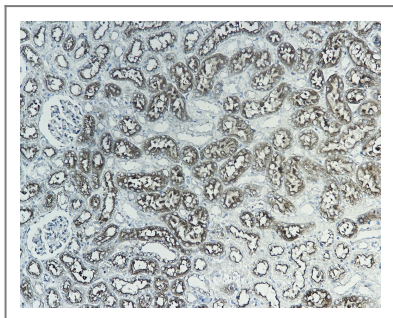
| Validation Data



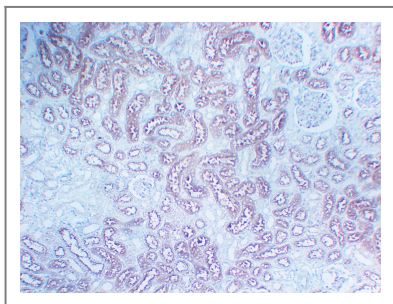
Mouse kidney tissue was stained with Anti-Tubulin α (PT2182) Antibody



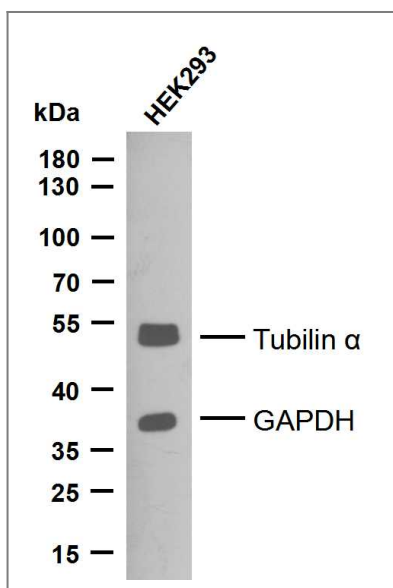
Mouse kidney tissue was stained with Anti-Tubulin α (PT2182) Antibody



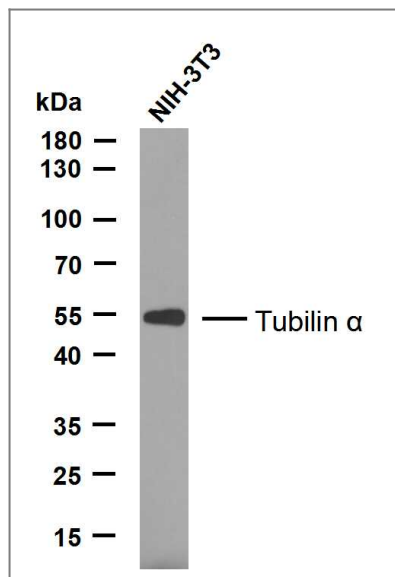
Rat kidney tissue was stained with Anti-Tubulin α (PT2182) Antibody



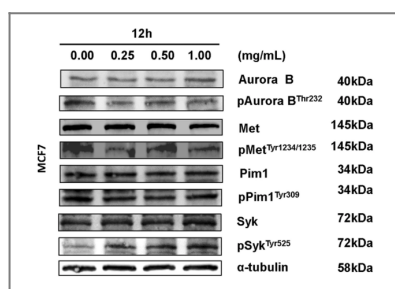
Rat kidney tissue was stained with Anti-Tubulin α (PT2182) Antibody



Various whole cell lysates were separated by 10% SDS-PAGE, and the membrane was blotted with anti-Tubulin α (YM3035) and anti-GAPDH (YM3029) antibody. The HRP-conjugated anti-Mouse IgG antibody was used to detect the antibody.



Various whole cell lysates were separated by 10% SDS-PAGE, and the membrane was blotted with anti-Tubulin α (YM3035) antibody. The HRP-conjugated anti-Mouse IgG antibody was used to detect the antibody.



Wang, T., Liang, L., Zhao, C. et al. Elucidating direct kinase targets of compound Danshen dropping pills employing archived data and prediction models. Sci Rep 11, 9541 (2021).

Contact information

Orders: order@immunoway.com
 Support: tech@immunoway.com
 Telephone: 877-594-3616 (Toll Free), 408-747-0185
 Website: <http://www.immunoway.com>
 Address: 2200 Ringwood Ave San Jose, CA 95131 USA



Please scan the QR code to access additional product information:
Tubulin α (PT2182)
Mouse mAb

For Research Use Only. Not for Use in Diagnostic Procedures.

[Antibody](#) | [ELISA Kits](#) | [Protein](#) | [Reagents](#)