

## Plant actin (Q30) Mouse mAb

CatalogNo: YM3034

### | Key Features

#### Host Species

- Mouse

#### Reactivity

- VariousPlants

#### Applications

- WB

#### MW

- 43kD (Observed)

### | Recommended Dilution Ratios

**WB 1:2000-5000**

### | Storage

**Storage\*** -15°C to -25°C/1 year(Do not lower than -25°C)

**Formulation** PBS, pH 7.4, containing 0.5%BSA, 0.02% sodium azide as Preservative and 50% Glycerol.

### | Basic Information

**Clonality** Monoclonal

**Clone Number** Q30

### | Immunogen Information

**Immunogen** Recombinant Protein of Plant actin

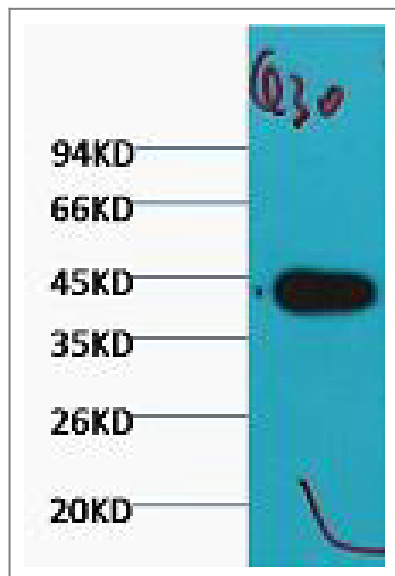
**Specificity** The antibody detects endogenous plant actin protein.

### | Target Information

**Protein Name**

---

## Validation Data



Western blot analysis of Arabidopsis, (Q30) diluted at 1:5000

## Contact information

Orders: [order@immunoway.com](mailto:order@immunoway.com)  
Support: [tech@immunoway.com](mailto:tech@immunoway.com)  
Telephone: 877-594-3616 (Toll Free), 408-747-0185  
Website: <http://www.immunoway.com>  
Address: 2200 Ringwood Ave San Jose, CA 95131 USA



Please scan the QR code  
to access additional  
product information:  
**Plant actin (Q30)**  
**Mouse mAb**

---

For Research Use Only. Not for Use in Diagnostic Procedures.

[Antibody](#) | [ELISA Kits](#) | [Protein](#) | [Reagents](#)