

## GAPDH (PTR2304) Mouse mAb

CatalogNo: YM3029

Orthogonal Validated 

### Key Features

#### Host Species

- Mouse

#### Reactivity

- Human, Mouse, Rat, Dog, Monkey, Rabbit, Pig, Bovine

#### Applications

- WB, IF, ELISA

#### MW

- 38kD (Calculated)
- 38kD (Observed)

#### Isotype

- IgG1, Kappa

### Storage

**Storage\*** -15°C to -25°C/1 year (Do not lower than -25°C)

**Formulation** PBS, 50% glycerol, 0.05% Proclin 300, 0.05% BSA

### Recommended Dilution Ratios

**WB 1:10000-50000**

**IF 1:100-500**

**ELISA 1:50000-500000**

### Basic Information

**Clonality** Monoclonal

**Clone Number** PTR2304

### Immunogen Information

**Immunogen** Synthetic Peptide of human GAPDH AA range: 200-300

**Specificity** This antibody detects endogenous levels of GAPDH protein.

## Target Information

**Gene name** GAPDH

**Protein Name** Glyceraldehyde-3-phosphate dehydrogenase

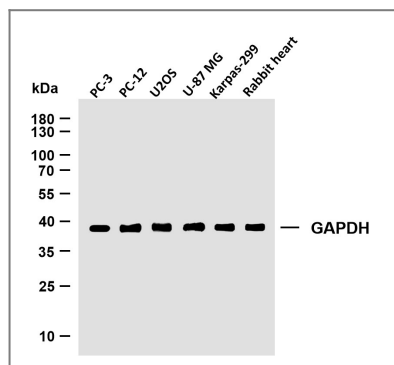
Organism	Gene ID	UniProt ID
Human	<a href="#">2597;</a>	<a href="#">P04406;</a>
Mouse	<a href="#">100042025;</a>	<a href="#">P16858;</a>
Rat	<a href="#">24383;</a>	<a href="#">P04797;</a>

**Tissue specificity** Astrocytoma,Brain,Cajal-Retzius cell,Colon adenocarcinoma,Epitheliu

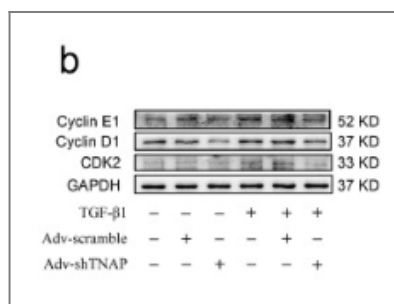
### Function

Catalytic activity:D-glyceraldehyde 3-phosphate + phosphate + NAD(+) = 3-phospho-D-glyceroyl phosphate + NADH.,Function:Independent of its glycolytic activity it is also involved in membrane trafficking in the early secretory pathway.,online information:Glyceraldehyde 3-phosphate dehydrogenase entry,pathway:Carbohydrate degradation; glycolysis; pyruvate from D-glyceraldehyde 3-phosphate: step 1.,pathway:Carbohydrate degradation; glycolysis; pyruvate from D-glyceraldehyde 3-phosphate: step 1/5.,PTM:Reversible S-nitrosylation of Cys-152 inhibits enzymatic activity and increases endogenous ADP-ribosylation, which inhibits the enzyme in a non-reversible manner. The latter modification is more likely to be a pathophysiological event associated with inhibition of gluconeogenesis.,sequence Caution:Differs quite extensively.,similarity:Belongs to the glyceraldehyde-3-phosphate dehydrogenase family.,subcellular location:Postnuclear and Perinuclear regions.,subunit:Homotetramer.,subunit:Homotetramer. Binds PRKCI.,

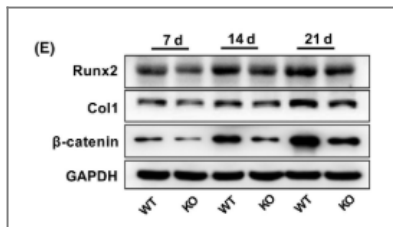
## Validation Data



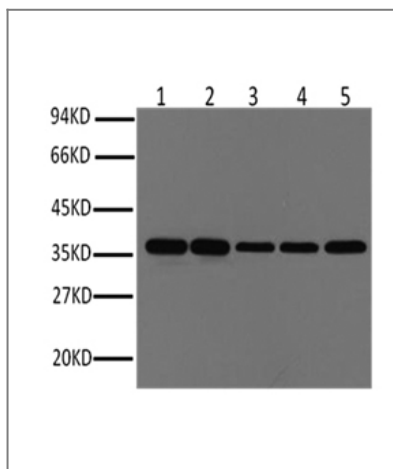
Various whole cell lysates were separated by 4-20% SDS-PAGE, and the membrane was blotted with anti-GAPDH (PTR2304) antibody. The HRP-conjugated Goat anti-Mouse IgG(H + L) antibody was used to detect the antibody. Lane 1:PC-3 Lane 2: PC-12 Lane 3: U2OS Lane 4: U-87 MG Lane 5:Karpas-299 Lane 6: Rabbit heart



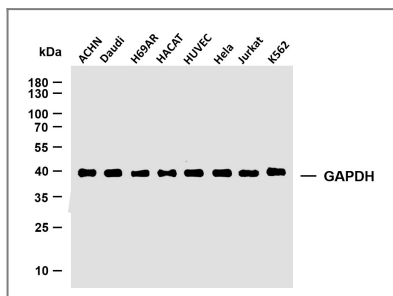
Cheng, Xiaocheng, et al. "TNAP is a novel regulator of cardiac fibrosis after myocardial infarction by mediating TGF-β/Smads and ERK1/2 signaling pathways." EBioMedicine 67 (2021): 103370.



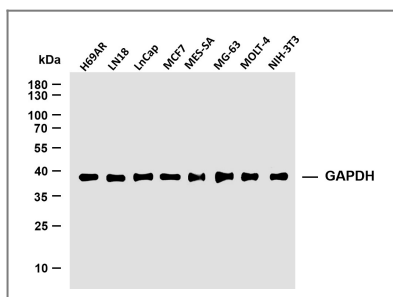
Wang, Yingying, et al. "p75NTR<sup>-/-</sup> mice exhibit an alveolar bone loss phenotype and inhibited PI3K/Akt/β-catenin pathway." *Cell proliferation* 53.4 (2020): e12800.



Western blot analysis of HeLa (1), Rat brain (2), Rabbit Muscle (3), Sheep Muscle (4), and Mouse brain (5), diluted at 1:10000.



Various whole cell lysates were separated by 4-20% SDS-PAGE, and the membrane was blotted with anti-GAPDH (PTR2304) antibody. The HRP-conjugated Goat anti-Mouse IgG(H + L) antibody was used to detect the antibody. Lane 1:ACHN Lane 2: Daudi Lane 3: H69AR Lane 4: HACAT Lane 5:HUVEC Lane 6: HeLa Lane 7: Jurkat Lane 8: K562



Various whole cell lysates were separated by 4-20% SDS-PAGE, and the membrane was blotted with anti-GAPDH (PTR2304) antibody. The HRP-conjugated Goat anti-Mouse IgG(H + L) antibody was used to detect the antibody. Lane 1:H69AR Lane 2: LN18 Lane 3: LnCap Lane 4: MCF7 Lane 5: MES-SA Lane 6: MG-63 Lane 7: MOLT-4 Lane 8: NIH-3T3

## Contact information

Orders: [order@immunoway.com](mailto:order@immunoway.com)  
 Support: [tech@immunoway.com](mailto:tech@immunoway.com)  
 Telephone: 877-594-3616 (Toll Free), 408-747-0185  
 Website: <http://www.immunoway.com>  
 Address: 2200 Ringwood Ave San Jose, CA 95131 USA



Please scan the QR code to access additional product information:  
**GAPDH (PTR2304)**  
**Mouse mAb**