

β-actin (PTR2364) Mouse mAb

CatalogNo: YM3028

Orthogonal Validated 

Key Features

Host Species

- Mouse

Reactivity

- Human, Mouse, Rat

Applications

- WB, IF, IP, ELISA

MW

- 42kD (Calculated)
- 42kD (Observed)

Isotype

- IgG1, Kappa

Recommended Dilution Ratios

WB 1:1000-5000**IF 1:100-500****ELISA 1:5000-50000****IP 1:50-1:200**

Storage

Storage* -15°C to -25°C/1 year (Do not lower than -25°C)**Formulation** PBS, 50% glycerol, 0.05% Proclin 300, 0.05% BSA

Basic Information

Clonality Monoclonal**Clone Number** PTR2364

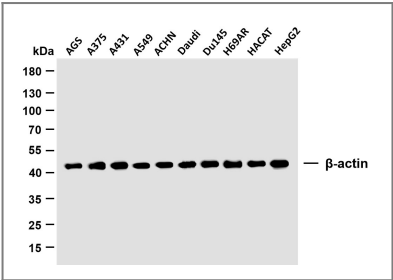
Immunogen Information

Immunogen Synthesized peptide derived from human protein. AA range: 1-100**Specificity** This antibody detects endogenous levels of β-actin protein.

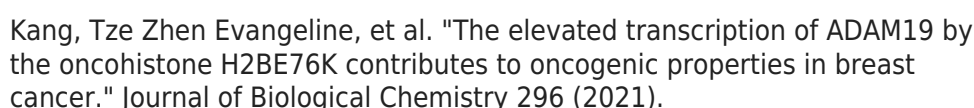
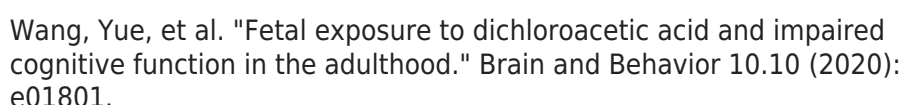
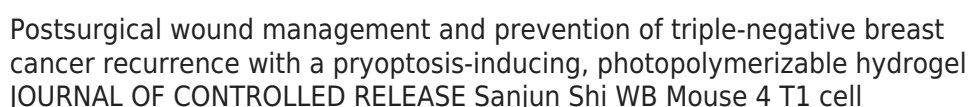
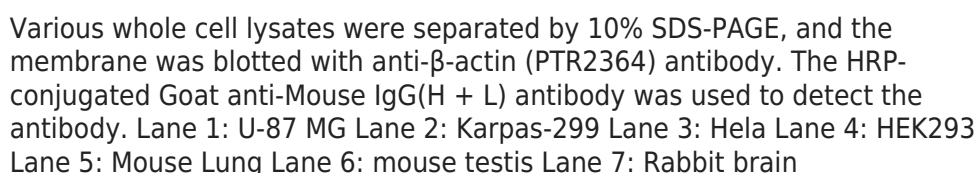
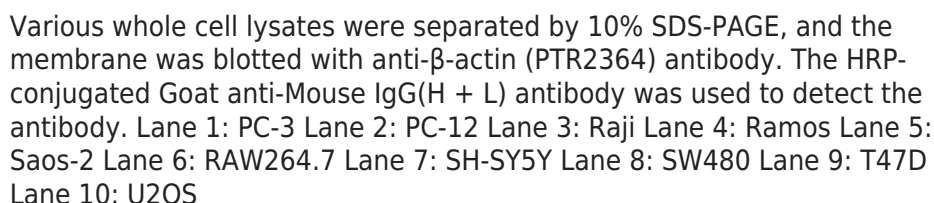
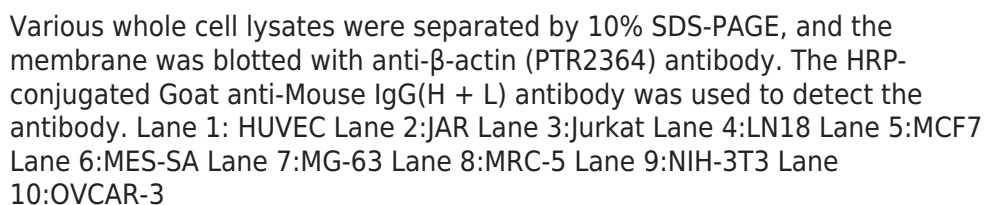
Target Information

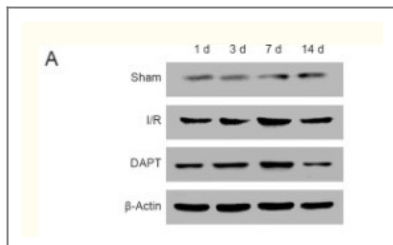
Gene name	ACTB		
Protein Name	Actin cytoplasmic 1		
	Organism	Gene ID	UniProt ID
	Human	60 ;	P60709 ;
	Mouse	11461 ;	P60710 ;
	Rat	81822 ;	P60711 ;
Cellular Localization	Cytoplasmic		
Tissue specificity	B-cell lymphoma,Brain,Cajal-Retzius cell,Eye,Fetal brain cortex,Foreskin,Hepatocellular car		
Function	<p>Disease:Defects in ACTB are a cause of dystonia juvenile-onset (DYTJ) [MIM:607371]. DYTJ is a form of dystonia with juvenile onset. Dystonia is defined by the presence of sustained involuntary muscle contraction, often leading to abnormal postures. DYTJ patients manifest progressive, generalized, dopa-unresponsive dystonia, developmental malformations and sensory hearing loss.,Function:Actins are highly conserved proteins that are involved in various types of cell motility and are ubiquitously expressed in all eukaryotic cells.,miscellaneous:In vertebrates 3 main groups of actin isoforms, alpha, beta and gamma have been identified. The alpha actins are found in muscle tissues and are a major constituent of the contractile apparatus. The beta and gamma actins coexist in most cell types as components of the cytoskeleton and as mediators of internal cell motility.,similarity:Belongs to the actin family.,subunit:Polymerization of globular actin (G-actin) leads to a structural filament (F-actin) in the form of a two-stranded helix. Each actin can bind to 4 others. Component of the BAF complex, which includes at least actin (ACTB), ARID1A, ARID1B/BAF250, SMARCA2, SMARCA4/BRG1, ACTL6A/BAF53, ACTL6B/BAF53B, SMARCE1/BAF57 SMARCC1/BAF155, SMARCC2/BAF170, SMARCB1/SNF5/INI1, and one or more of SMARCD1/BAF60A, SMARCD2/BAF60B, or SMARCD3/BAF60C. In muscle cells, the BAF complex also contains DPF3. Found in a complex with XPO6, Ran, ACTB and PFN1. Interacts with XPO6.,</p>		

Validation Data



Various whole cell lysates were separated by 10% SDS-PAGE, and the membrane was blotted with anti- β -actin (PTR2364) antibody. The HRP-conjugated Goat anti-Mouse IgG(H + L) antibody was used to detect the antibody. Lane 1: AGS Lane 2: A375 Lane 3: A431 Lane 4: A549 Lane 5: ACHN Lane 6: Daudi Lane 7: Du145 Lane 8: H69AR Lane 9: HACAT Lane 10: HepG2





Wang, Jun-Jie, et al. "Neuroprotective effect of Notch pathway inhibitor DAPT against focal cerebral ischemia/reperfusion 3 hours before model establishment." *Neural regeneration research* 14.3 (2019): 452.

Contact information

Orders: order@immunoway.com
 Support: tech@immunoway.com
 Telephone: 877-594-3616 (Toll Free), 408-747-0185
 Website: <http://www.immunoway.com>
 Address: 2200 Ringwood Ave San Jose, CA 95131 USA



Please scan the QR code to access additional product information:
β-actin (PTR2364)
Mouse mAb

For Research Use Only. Not for Use in Diagnostic Procedures.

[Antibody](#) | [ELISA Kits](#) | [Protein](#) | [Reagents](#)