

Tubulin α (8F11) Mouse mAb (AbFluor 647)

CatalogNo: YM2178

Comparable Abs 

Key Features

Host Species

- Mouse

Reactivity

- Human, Mouse, Rat

Applications

- WB, IHC, IF, IP

Isotype

- IgG

Conjugate

- AbFluor 647

Recommended Dilution Ratios

Optimal working dilutions should be determined experimentally by the investigator

Suggested starting dilutions are as follows: IHC 1:50-300

IF 1:200.

Storage

Storage*

Stable for one year at -15°C to -25°C from date of shipment. For maximum recovery of product, centrifuge the original vial after thawing and prior to removing the cap. Aliquot to avoid repeated freezing and thawing. Store in dark.

Formulation

Liquid in PBS, pH 7.4, containing 0.02% sodium azide as preservative and 50% Glycerol.

Basic Information

Clonality

Monoclonal

Clone Number

8F11

Immunogen Information

Specificity

α -tubulin Monoclonal Antibody(8F11) AbFluor™ 647 Conjugated specially designed for your Immunofluorescence analysis.

| Target Information

Gene name TUBA1A

Protein Name Tubulin alpha-1A chain

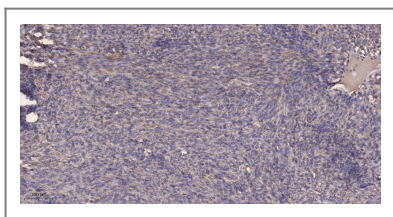
Organism	Gene ID	UniProt ID
Human	7846 ; 10376 ;	Q71U36 ; P68363 ;

Cellular Localization Cytoplasm, cytoskeleton.

Tissue specificity Expressed at a high level in fetal brain.

Function Disease:Defects in TUBA1A are the cause of lissencephaly type 3 (LIS3) [MIM:611603]. LIS is characterized by a smooth brain surface due to the absence (agyria) or reduction (pachygyria) of surface convolutions. It is often associated with psychomotor retardation and seizures. LIS3 features include agyria or pachygyria or laminar heterotopia, severe mental retardation, motor delay, variable presence of seizures, and abnormalities of corpus callosum, hippocampus, cerebellar vermis and brainstem.,Function:Tubulin is the major constituent of microtubules. It binds two moles of GTP, one at an exchangeable site on the beta chain and one at a non-exchangeable site on the alpha-chain.,PTM:Undergoes a tyrosination/detyrosination cycle, the cyclic removal and re-addition of a C-terminal tyrosine residue by the enzymes tubulin tyrosine carboxypeptidase (TTCP) and tubulin tyrosine ligase (TTL), respectively.,similarity:Belongs to the tubulin family.,subunit:Dimer of alpha and beta chains.,tissue specificity:Expressed at a high level in fetal brain.,

| Validation Data



Immunohistochemical analysis of paraffin-embedded human Colon cancer. 1, Antibody was diluted at 1:200(4° overnight). 2, Tris-EDTA,pH9.0 was used for antigen retrieval. 3,Secondary antibody was diluted at 1:200(room temperature, 45min).

| Contact information

Orders: order@immunoway.com
Support: tech@immunoway.com
Telephone: 877-594-3616 (Toll Free), 408-747-0185
Website: <http://www.immunoway.com>
Address: 2200 Ringwood Ave San Jose, CA 95131 USA



Please scan the QR code to access additional product information:
Tubulin α (8F11)
Mouse mAb
(AbFluor 647)

