

SHP-1 Mouse mAb

CatalogNo: YM1456

Comparable Abs 

Key Features

Host Species

- Mouse

Reactivity

- Human

Applications

- WB, IP

MW

- 68kD (Observed)

Recommended Dilution Ratios

WB 1:1000

Storage

Storage* -15°C to -25°C/1 year(Do not lower than -25°C)**Formulation** Liquid in PBS containing 50% glycerol, 0.5% BSA and 0.02% sodium azide.

Basic Information

Clonality Monoclonal

Immunogen Information

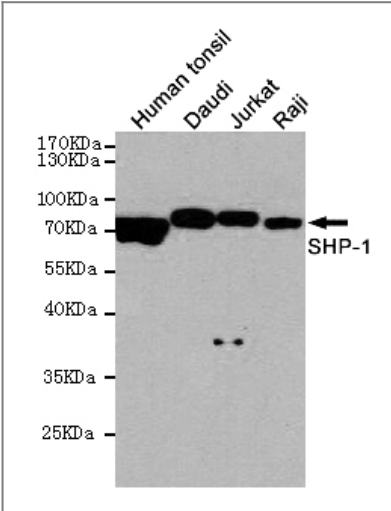
Immunogen Purified recombinant human SHP-1 protein fragments expressed in E.coli.**Specificity** This antibody detects endogenous levels of SHP-1 and does not cross-react with related proteins.

Target Information

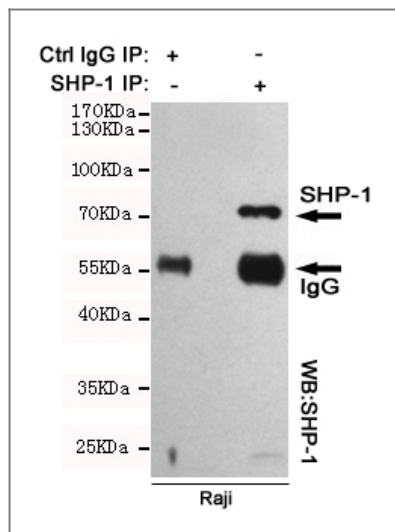
Gene name ptpn6

Protein Name	Organism	Gene ID	UniProt ID
	Human	5777 ;	P29350 ;
	Mouse		P29351 ;
Cellular Localization	Cytoplasm. Nucleus. In neurons, translocates into the nucleus after treatment with angiotensin II (By similarity). Shuttles between the cytoplasm and nucleus via its association with PDPK1. .		
Tissue specificity	Isoform 1 is expressed in hematopoietic cells. Isoform 2 is expressed in non-hematopoietic cells.		
Function	Catalytic activity:Protein tyrosine phosphate + H(2)O = protein tyrosine + phosphate.,Function:Plays a key role in hematopoiesis. This PTPase activity may directly link growth factor receptors and other signaling proteins through protein-tyrosine phosphorylation. The SH2 regions may interact with other cellular components to modulate its own phosphatase activity against interacting substrates. Together with MTUS1, induces UBE2V2 expression upon angiotensin II stimulation.,PTM:Phosphorylated on serine and tyrosine residues.,similarity:Belongs to the protein-tyrosine phosphatase family. Non-receptor class 2 subfamily.,similarity:Contains 1 tyrosine-protein phosphatase domain.,similarity:Contains 2 SH2 domains.,subcellular location:In neurons, translocates into the nucleus after treatment with angiotensin II.,subunit:Monomer. Interacts with MTUS1 (By similarity). Binds PTPNS1, LILRB1 and LILRB2. Interacts with FCRL2, FCRL3, FCRL4, CD300LF and CD84.,tissue specificity:Isoform 1 is expressed in hematopoietic cells while isoform 2 is expressed in non-hematopoietic cells.,		

Validation Data



Western blot detection of SHP-1 in Human tonsil,Daudi,Jurkat and Raji cell lysates using SHP-1 mouse mAb (1:1000 diluted).Predicted band size:67KDa.Observed band size:67KDa.



Immunoprecipitation analysis of Raji cell lysates using SHP-1 mouse mAb.

Contact information

Orders: order@immunoway.com
 Support: tech@immunoway.com
 Telephone: 877-594-3616 (Toll Free), 408-747-0185
 Website: <http://www.immunoway.com>
 Address: 2200 Ringwood Ave San Jose, CA 95131 USA



Please scan the QR code
to access additional
product information:
SHP-1 Mouse mAb

For Research Use Only. Not for Use in Diagnostic Procedures.

[Antibody](#) | [ELISA Kits](#) | [Protein](#) | [Reagents](#)