

## 4E-BP2 Mouse mAb

CatalogNo: YM1454

### | Key Features

#### Host Species

- Mouse

#### Reactivity

- Transfected

#### Applications

- WB

#### MW

- 15-20kD (Observed)

### | Recommended Dilution Ratios

WB 1:1000

### | Storage

**Storage\*** -15°C to -25°C/1 year(Do not lower than -25°C)

**Formulation** Liquid in PBS containing 50% glycerol, 0.5% BSA and 0.02% sodium azide.

### | Basic Information

**Clonality** Monoclonal

### | Immunogen Information

**Immunogen** Recombinant protein of human 4E-BP2.

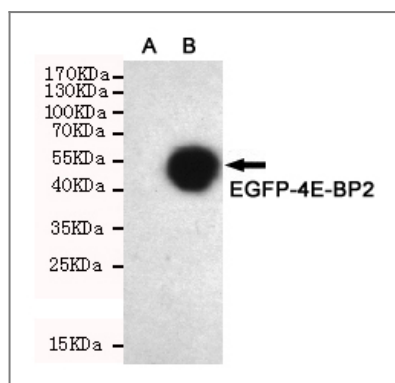
**Specificity** Transfected Only.

### | Target Information

**Gene name** eif4ebp2

Protein Name	Organism	Gene ID	UniProt ID
	Human	<a href="#">1979;</a>	<a href="#">Q13542;</a>
	Mouse		<a href="#">P70445;</a>
<b>Cellular Localization</b>	intracellular,cytoplasm,		
<b>Tissue specificity</b>	Lung,Placenta,Uterus,		
<b>Function</b>	Function:Regulates eIF4E activity by preventing its assembly into the eIF4F complex. Mediates the regulation of protein translation by hormones, growth factors and other stimuli that signal through the MAP kinase pathway.,PTM:Phosphorylated on serine and threonine residues in response to insulin, EGF and PDGF.,similarity:Belongs to the eIF4E-binding protein family.,subunit:Nonphosphorylated EIF4EBP2 interacts with EIF4E.,		

## Validation Data



Western blot detection of 4E-BP2 in CHO-K1 cell lysate(A)and CHO-K1 transfected by EGFP-4E-BP2 (B)cell lysate using 4E-BP2 mouse mAb (1:1000 diluted).

## Contact information

Orders: [order@immunoway.com](mailto:order@immunoway.com)  
 Support: [tech@immunoway.com](mailto:tech@immunoway.com)  
 Telephone: 877-594-3616 (Toll Free), 408-747-0185  
 Website: <http://www.immunoway.com>  
 Address: 2200 Ringwood Ave San Jose, CA 95131 USA



Please scan the QR code to access additional product information:  
**4E-BP2 Mouse mAb**