

Leptin Mouse mAb

CatalogNo: YM1446

Key Features

Host Species

- Mouse

Reactivity

- Human

Applications

- ELISA

MW

- 16kD (Observed)

Recommended Dilution Ratios

ELISA 1:10000-20000

Storage

Storage* -15°C to -25°C/1 year(Do not lower than -25°C)

Formulation Liquid in PBS containing 50% glycerol, 0.5% BSA and 0.02% sodium azide.

Basic Information

Clonality Monoclonal

Clone Number 6H8

Immunogen Information

Immunogen Purified recombinant full length of human Leptin protein expressed in E.coli.

Specificity This antibody detects human Leptin proteins.

Target Information

Gene name LEP OB OBS

Protein Name Leptin (Obese protein) (Obesity factor)

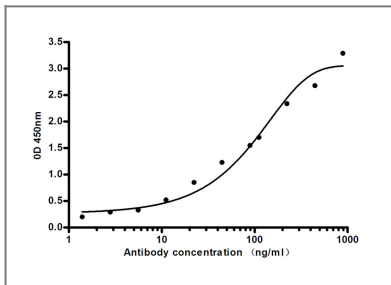
Organism	Gene ID	UniProt ID
Human	3952;	P41159;
Mouse	16846;	P41160;

Cellular Localization Secreted .

Tissue specificity Adipose tissue is the main source of leptin. It is also produced by other peripheral tissues such as the skeletal muscle (PubMed:7789654, PubMed:16052473, PubMed:12448771). Expressed by intercalated and striated tracts of submandibular and parotid salivary gland intralobular ducts (PubMed:12448771). Detected by fundic epithelium of the gastric mucosa (PubMed:10896907). Secreted into blood and gastric juice (PubMed:10896907).

Function Disease:Defects in LEP may be a cause of autosomal recessive obesity [MIM:601665].,Function:May function as part of a signaling pathway that acts to regulate the size of the body fat depot. An increase in the level of LEP may act directly or indirectly on the CNS to inhibit food intake and/or regulate energy expenditure as part of a homeostatic mechanism to maintain constancy of the adipose mass.,online information:Leptin entry,similarity:Belongs to the leptin family.,subunit:Interacts with SIGLEC6.,

Validation Data



Indirect ELISA assay for anti-Leptin mouse mAb. Antigen coating concentration: 4ug/ml.

Contact information

Orders: order@immunoway.com
Support: tech@immunoway.com
Telephone: 877-594-3616 (Toll Free), 408-747-0185
Website: <http://www.immunoway.com>
Address: 2200 Ringwood Ave San Jose, CA 95131 USA



Please scan the QR code to access additional product information:
Leptin Mouse mAb