

Annexin A1 Mouse mAb

CatalogNo: YM1434

| Key Features

Host Species

- Mouse

Reactivity

- Human, Mouse, Rat, Monkey

Applications

- WB

MW

- 38kD (Observed)

| Recommended Dilution Ratios

WB 1:1000

| Storage

Storage*

-15°C to -25°C/1 year(Do not lower than -25°C)

Formulation

Liquid in PBS containing 50% glycerol, 0.5% BSA and 0.02% sodium azide.

| Basic Information

Clonality

Monoclonal

| Immunogen Information

Immunogen

Purified recombinant human Annexin A1 beta protein fragments expressed in E.coli.

Specificity

This antibody detects endogenous levels of Annexin A1 and does not cross-react with related proteins.

| Target Information

Gene name

anxa1

Protein Name	Organism	Gene ID	UniProt ID
	Human	301;	P04083;
	Mouse		P10107;

Cellular Localization

Nucleus . Cytoplasm . Cell projection, cilium . Cell membrane . Membrane ; Peripheral membrane protein . Endosome membrane ; Peripheral membrane protein . Basolateral cell membrane . Apical cell membrane . Lateral cell membrane . Secreted . Secreted, extracellular space . Cell membrane ; Peripheral membrane protein ; Extracellular side . Secreted, extracellular exosome . Cytoplasmic vesicle, secretory vesicle lumen . Cell projection, phagocytic cup . Early endosome . Cytoplasmic vesicle membrane ; Peripheral membrane protein . Secreted, at least in part via exosomes and other secretory vesicles. Detected in exosomes and other extracellular vesicles (PubMed:25664854). Alternatively, the secretion is dependent on protein unfolding and facilitated by the cargo receptor TMED10; it results in the protein translocation from the cytoplasm into ERGIC (endoplasmic reticulum-Golgi intermediate compartment) followed by vesicle entry and secretion (PubMed:32272059). Detected in gelatinase granules in resting neutrophils (PubMed:10772777). Secretion is increased in response to wounding and inflammation (PubMed:25664854). Secretion is increased upon T-cell activation (PubMed:17008549). Neutrophil adhesion to endothelial cells stimulates secretion via gelatinase granules, but foreign particle phagocytosis has no effect (PubMed:10772777). Colocalizes with actin fibers at phagocytic cups (By similarity). Displays calcium-dependent binding to phospholipid membranes (PubMed:2532504, PubMed:8557678). .

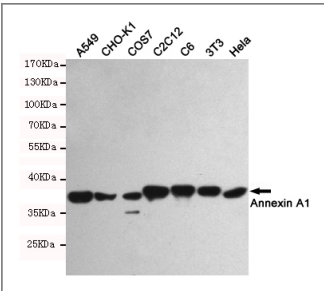
Tissue specificity

Detected in resting neutrophils (PubMed:10772777). Detected in peripheral blood T-cells (PubMed:17008549). Detected in extracellular vesicles in blood serum from patients with inflammatory bowel disease, but not in serum from healthy donors (PubMed:25664854). Detected in placenta (at protein level) (PubMed:2532504). Detected in liver.

Function

Domain:A pair of annexin repeats may form one binding site for calcium and phospholipid.,Function:Calcium/phospholipid-binding protein which promotes membrane fusion and is involved in exocytosis. This protein regulates phospholipase A2 activity. It seems to bind from two to four calcium ions with high affinity.,PTM:Phosphorylated by protein kinase C, epidermal growth factor receptor/kinase and TRPM7. Phosphorylation results in loss of the inhibitory activity.,similarity:Belongs to the annexin family.,similarity:Contains 1 annexin repeat.,similarity:Contains 2 annexin repeats.,similarity:Contains 4 annexin repeats.,subcellular location:Found in the cilium, nucleus and basolateral cell membrane of ciliated cells in the tracheal endothelium (By similarity). Found in the cytoplasm of type II pneumocytes and alveolar macrophages.,subunit:Homodimer in placenta (20%); linked by transglutamylation. Interacts with DYSF.,

Validation Data



Western blot detection of Annexin A1 in A549,CHO-K1,COS7,C2C12,C6,3T3 and Hela cell lysates using Annexin A1 mouse mAb (1:1000 diluted).Predicted band size:38KDa.Observed band size:38KDa.

| Contact information

Orders: order@immunoway.com
Support: tech@immunoway.com
Telephone: 877-594-3616 (Toll Free), 408-747-0185
Website: <http://www.immunoway.com>
Address: 2200 Ringwood Ave San Jose, CA 95131 USA



Please scan the QR code
to access additional
product information:
**Annexin A1 Mouse
mAb**

For Research Use Only. Not for Use in Diagnostic Procedures.

[Antibody](#) | [ELISA Kits](#) | [Protein](#) | [Reagents](#)