

DDX3 Mouse mAb

CatalogNo: YM1415

Comparable Abs 

Key Features

Host Species

- Mouse

Reactivity

- Human, Rat, Mouse, Monkey

Applications

- WB, IP, ICC

MW

- 75kD (Observed)

Recommended Dilution Ratios

WB 1:1000

ICC 1:200

Storage

Storage* -15°C to -25°C/1 year (Do not lower than -25°C)**Formulation** Liquid in PBS containing 50% glycerol, 0.5% BSA and 0.02% sodium azide.

Basic Information

Clonality Monoclonal

Immunogen Information

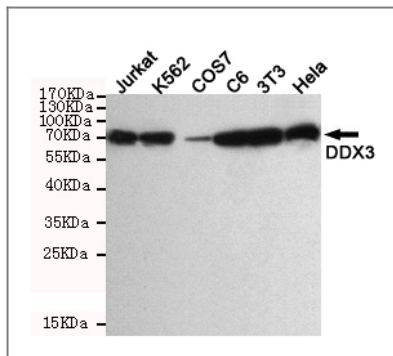
Immunogen Purified recombinant human DDX3 protein fragments expressed in E.coli.**Specificity** This antibody detects endogenous levels of DDX3 and does not cross-react with related proteins.

Target Information

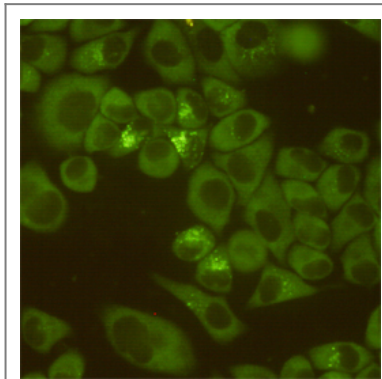
Gene name ddx3x

Protein Name	Organism	Gene ID	UniProt ID
	Human	1654 ;	O00571 ;
	Mouse		Q62167 ;
Cellular Localization	<p>Cell membrane . Nucleus . Cytoplasm . Cytoplasm, Stress granule . Inflammasome . Cell projection, lamellipodium . Cytoplasm, cytoskeleton, microtubule organizing center, centrosome . Shuttles between the nucleus and the cytosol (PubMed:15507209, PubMed:18636090, PubMed:29899501, PubMed:31575075, PubMed:30131165). Exported from the nucleus partly through the XPO1/CRM1 system and partly through NXF1/TAP (PubMed:15507209, PubMed:18636090, PubMed:18596238, PubMed:31575075, PubMed:30131165). Localizes to nuclear pores on the outer side of the nuclear membrane (PubMed:15507209). In the cytosol, partly colocalizes with mitochondria (PubMed:20127681). At G0, predominantly located in nucleus. In G1/S phase, predominantly cytoplasmic (PubMed:22034099). During prophase/prometaphase, localizes in close proximity to the condensing chromosomes (PubMed:30131165, PubMed:21730191). During telophase, localizes around the newly synthesized nuclear membrane and in the cytoplasm (PubMed:22034099). Colocalizes with TRPV4 at the plasma membrane. When TRPV4 channel is activated, intracellular Ca(2+) levels increase and the calmodulin/CAMKII pathway is activated, relocates to the nucleus (PubMed:29899501). WNT3A stimulation promotes DDX3 recruitment to the plasma membrane (PubMed:23413191). At the leading edge of migrating fibroblasts, colocalizes with CAPRIN1 and PABPC1 (PubMed:28733330). Localizes to centrosome throughout the cell cycle and associates with TP53 at centrosome during mitosis (PubMed:28842590). Translocates to the nucleus in response to HPIV-3 virus-mediated infection (PubMed:31575075). .</p>		
Tissue specificity	<p>Widely expressed (PubMed:15294876). In testis, expressed in spermatids (PubMed:15294876). Expressed in epidermis and liver (at protein level) (PubMed:16818630, PubMed:16301996).</p>		
Function	<p>Function:ATP-dependent RNA helicase. Acts as a cofactor for XPO1-mediated nuclear export of incompletely spliced HIV-1 Rev RNAs. Also involved in HIV-1 replication. Interacts specifically with hepatitis C virus core protein resulting in a change in intracellular location.,similarity:Belongs to the DEAD box helicase family.,similarity:Belongs to the DEAD box helicase family. DDX3/DED1 subfamily.,similarity:Contains 1 helicase ATP-binding domain.,similarity:Contains 1 helicase C-terminal domain.,subcellular location:Located predominantly in nuclear speckles and, at low levels, throughout the cytoplasm. Located to the outer side of nuclear pore complexes (NPC). Shuttles between the nucleus and the cytoplasm in a XPO1-dependent manner.,subunit:Found in a complex with Rev and XPO1. Interacts with XPO1 and TDRD3. Interacts with HCV core protein.,</p>		

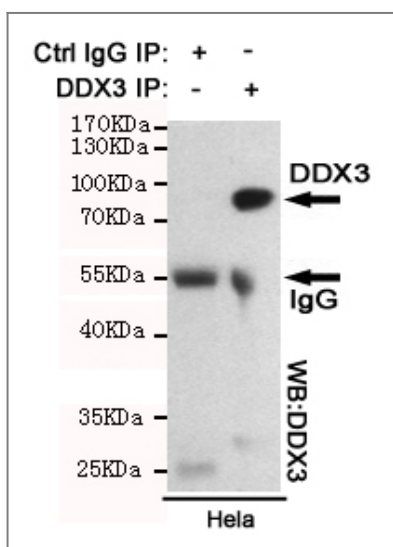
| Validation Data



Western blot detection of DDX3 in HeLa, 3T3, C6, COS7, K562 and Jurkat cell lysate using DDX3 mouse mAb (1:1000 diluted). Predicted band size: 75KDa. Observed band size: 75KDa.



Immunocytochemistry staining of HeLa cells fixed with 4% Paraformaldehyde and using DDX3 mouse mAb (dilution 1:200).



Immunoprecipitation analysis of HeLa cell lysates using DDX3 mouse mAb.

Contact information

Orders: order@immunoway.com
 Support: tech@immunoway.com
 Telephone: 877-594-3616 (Toll Free), 408-747-0185
 Website: <http://www.immunoway.com>
 Address: 2200 Ringwood Ave San Jose, CA 95131 USA



Please scan the QR code to access additional product information:
DDX3 Mouse mAb