

# Syntenin Mouse mAb

CatalogNo: YM1301

## Key Features

### Host Species

- Mouse

### Reactivity

- Human

### Applications

- WB

### MW

- 32kD (Observed)

## Recommended Dilution Ratios

WB 1:1000

## Storage

**Storage\*** -15°C to -25°C/1 year(Do not lower than -25°C)

**Formulation** Liquid in PBS containing 50% glycerol, 0.5% BSA and 0.02% sodium azide.

## Basic Information

**Clonality** Monoclonal

**Clone Number** 19F12

## Immunogen Information

**Immunogen** Purified recombinant human Syntenin protein fragments expressed in E.coli.

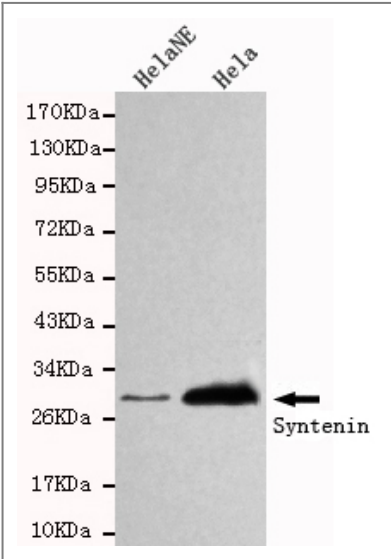
**Specificity** This antibody detects endogenous levels of Syntenin and does not cross-react with related proteins.

## Target Information

**Gene name** sdcbp

Protein Name	Organism	Gene ID	UniProt ID
	Human	<a href="#">6386;</a>	<a href="#">O00560;</a>
	Mouse		<a href="#">O08992;</a>
Cellular Localization	Cell junction, focal adhesion . Cell junction, adherens junction . Cell membrane ; Peripheral membrane protein . Endoplasmic reticulum membrane ; Peripheral membrane protein . Nucleus . Melanosome . Cytoplasm, cytosol . Cytoplasm, cytoskeleton . Secreted, extracellular exosome . Membrane raft . Mainly membrane-associated. Localized to adherens junctions, focal adhesions and endoplasmic reticulum. Colocalized with actin stress fibers. Also found in the nucleus. Identified by mass spectrometry in melanosome fractions from stage I to stage IV. Associated to the plasma membrane in the presence of FZD7 and phosphatidylinositol 4,5-bisphosphate (PIP2) (PubMed:27386966). .		
Tissue specificity	Expressed in lung cancers, including adenocarcinoma, squamous cell carcinoma and small-cell carcinoma (at protein level) (PubMed:25893292). Widely expressed. Expressed in fetal kidney, liver, lung and brain. In adult highest expression in heart and placenta.		
Function	Function:Seems to function as an adapter protein. In adherens junctions may function to couple syndecans to cytoskeletal proteins or signaling components. Seems to couple transcription factor SOX4 to the IL-5 receptor (IL5RA). May also play a role in vesicular trafficking. Seems to be required for the targeting of TGFA to the cell surface in the early secretory pathway.,induction:By gamma interferon in melanoma cells.,PTM:Phosphorylated on tyrosine residues.,similarity:Contains 2 PDZ (DHR) domains.,subcellular location:Mainly membrane-associated. Localized to adherens junctions, focal adhesions and endoplasmic reticulum. Colocalized with actin stress fibers. Also found in the nucleus. Identified by mass spectrometry in melanosome fractions from stage I to stage IV.,subunit:Monomer and homodimer (By similarity). Interacts with SDC1, SDC2, SDC3, SDC4, NRXN2, EPHA7, EPHB1, NF2 isoform 1, TGFA and IL5RA. Interacts with neurofascin, SDCBP2 and PTPRJ.,tissue specificity:Widely expressed. Expressed in fetal kidney, liver, lung and brain. In adult highest expression in heart and placenta.,		

## Validation Data



Western blot detection of Syntenin in HeLaNE and HeLa cell lysates using Syntenin mouse mAb (1:1000 diluted).Predicted band size:32KDa.Observed band size:32KDa.

## | Contact information

Orders: order@immunoway.com  
Support: tech@immunoway.com  
Telephone: 877-594-3616 (Toll Free), 408-747-0185  
Website: <http://www.immunoway.com>  
Address: 2200 Ringwood Ave San Jose, CA 95131 USA



Please scan the QR code  
to access additional  
product information:  
**Syntenin Mouse  
mAb**

---

For Research Use Only. Not for Use in Diagnostic Procedures.

[Antibody](#) | [ELISA Kits](#) | [Protein](#) | [Reagents](#)