

CDC2/CDK1 Mouse mAb

CatalogNo: YM1292

| Key Features

Host Species

- Mouse

Reactivity

- Human

Applications

- WB, ICC

MW

- 34kD (Observed)

| Recommended Dilution Ratios

WB 1:100

ICC 1:50

| Storage

Storage* -15°C to -25°C/1 year(Do not lower than -25°C)

Formulation Liquid in PBS containing 50% glycerol, 0.5% BSA and 0.02% sodium azide.

| Basic Information

Clonality Monoclonal

| Immunogen Information

Immunogen Purified recombinant human CDC2/CDK1 protein fragments expressed in E.coli.

Specificity This antibody detects endogenous levels of CDC2/CDK1 and does not cross-react with related proteins.

| Target Information

Gene name cdk1

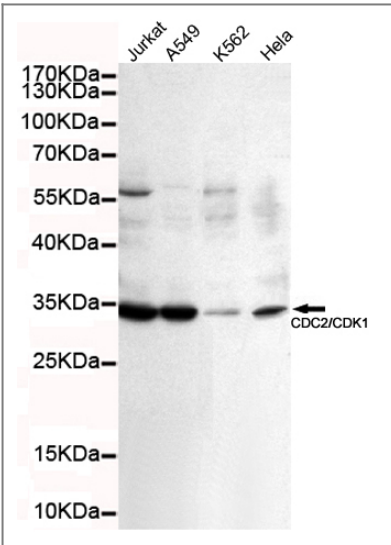
Protein Name	Organism	Gene ID	UniProt ID
	Human	983;	P06493;
	Mouse		P11440;

Cellular Localization Nucleus. Cytoplasm. Mitochondrion . Cytoplasm, cytoskeleton, microtubule organizing center, centrosome . Cytoplasm, cytoskeleton, spindle. Cytoplasmic during the interphase. Colocalizes with SIRT2 on centrosome during prophase and on splindle fibers during metaphase of the mitotic cell cycle. Reversibly translocated from cytoplasm to nucleus when phosphorylated before G2-M transition when associated with cyclin-B1. Accumulates in mitochondria in G2-arrested cells upon DNA-damage.

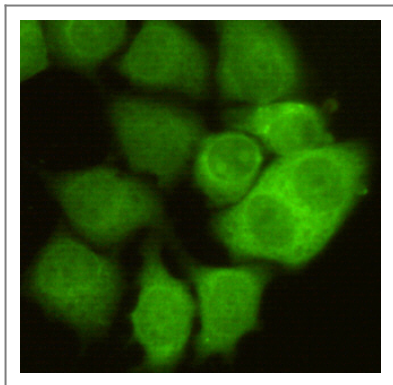
Tissue specificity Isoform 2 is found in breast cancer tissues.

Function Catalytic activity:ATP + [DNA-directed RNA polymerase] = ADP + [DNA-directed RNA polymerase] phosphate.,Catalytic activity:ATP + a protein = ADP + a phosphoprotein.,enzyme regulation:Phosphorylation at Thr-14 or Tyr-15 inactivates the enzyme, while phosphorylation at Thr-161 activates it.,Function:Plays a key role in the control of the eukaryotic cell cycle. It is required in higher cells for entry into S-phase and mitosis. p34 is a component of the kinase complex that phosphorylates the repetitive C-terminus of RNA polymerase II.,similarity:Belongs to the protein kinase superfamily.,similarity:Belongs to the protein kinase superfamily. CMGC Ser/Thr protein kinase family. CDC2/CDKX subfamily.,similarity:Contains 1 protein kinase domain.,subunit:Forms a stable but non-covalent complex with a regulatory subunit and with a cyclin. Interacts with DLGAP5. Isoform 2 is unable to complex with cyclin B1 and also fails to bind to the CDK inhibitor p21. Interacts with catalytically active CCNB1 and RALBP1 during mitosis to form an endocytotic complex during interphase.,

| Validation Data



Western blot detection of CDC2/CDK1 in K562,A549,Jurkat and HeLa cell lysates using CDC2/CDK1 mouse mAb (1:100 diluted).Predicted band size: 34KDa.Observed band size: 34KDa.



Immunocytochemistry of HeLa cells using anti-CDC2/CDK1 mouse mAb diluted 1:50.

Contact information

Orders: order@immunoway.com
Support: tech@immunoway.com
Telephone: 877-594-3616 (Toll Free), 408-747-0185
Website: <http://www.immunoway.com>
Address: 2200 Ringwood Ave San Jose, CA 95131 USA



Please scan the QR code
to access additional
product information:
**CDC2/CDK1 Mouse
mAb**

For Research Use Only. Not for Use in Diagnostic Procedures.

[Antibody](#) | [ELISA Kits](#) | [Protein](#) | [Reagents](#)