

Cyclin D2 Mouse mAb

CatalogNo: YM1276 **Orthogonal Validated** 

Key Features

Host Species

- Mouse

Reactivity

- Human

Applications

- WB

MW

- 38kD (Observed)

Storage

Storage* -15°C to -25°C/1 year(Do not lower than -25°C)**Formulation** Liquid in PBS containing 50% glycerol, 0.5% BSA and 0.02% sodium azide.

Recommended Dilution Ratios

WB 1:1000

Basic Information

Clonality Monoclonal**Clone Number** 12A6

Immunogen Information

Immunogen Purified recombinant human Cyclin D2 protein fragments expressed in E.coli.**Specificity** This antibody detects over-expressed levels of Cyclin D2 and does not cross-react with related proteins.

Target Information

Gene name ccnd2

Protein Name

Organism	Gene ID	UniProt ID
Human	894;	P30279;
Mouse		P30280;

Cellular Localization

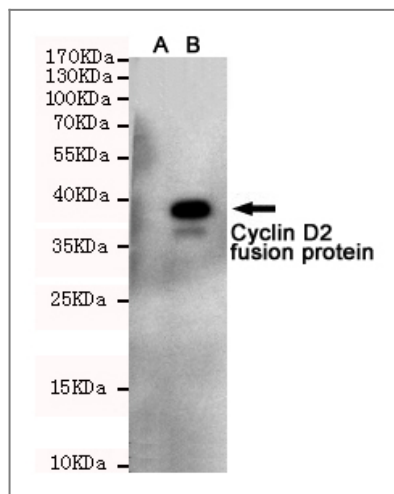
Nucleus . Cytoplasm . Nucleus membrane . Cyclin D-CDK4 complexes accumulate at the nuclear membrane and are then translocated into the nucleus through interaction with KIP/CIP family members. .; [Isoform 2]: Cytoplasm .

Tissue specificity Bone marrow,Heart,Placenta,Uterus,

Function

Function:Essential for the control of the cell cycle at the G1/S (start) transition.,similarity:Belongs to the cyclin family.,similarity:Belongs to the cyclin family. Cyclin D subfamily.,subunit:Interacts with the CDK4 and CDK6 protein kinases to form a serine/threonine kinase holoenzyme complex. The cyclin subunit imparts substrate specificity to the complex.,

Validation Data



Western blot detection of Cyclin D2 in CHO-K1 cell lysate(A)and CHO-K1 transfected by Cyclin D2-fragment EGFP fusion protein(B)cell lysate using Cyclin D2 mouse mAb (1:1000 diluted).Predicted band size:38KDa.Observed band size:38KDa.

Contact information

Orders: order@immunoway.com
Support: tech@immunoway.com
Telephone: 877-594-3616 (Toll Free), 408-747-0185
Website: <http://www.immunoway.com>
Address: 2200 Ringwood Ave San Jose, CA 95131 USA



Please scan the QR code to access additional product information:
Cyclin D2 Mouse mAb

