

GSK3 β Mouse mAb

CatalogNo: YM1273 Comparable Abs 

Key Features

Host Species

- Mouse

Reactivity

- Human, Mouse

Applications

- WB, IF, IP

MW

- 46kD (Observed)

Storage

Storage* -15°C to -25°C/1 year (Do not lower than -25°C)

Formulation Liquid in PBS containing 50% glycerol, 0.5% BSA and 0.02% sodium azide.

Recommended Dilution Ratios

WB 1:1000

ICC 1:200

IF 1:50-200

Basic Information

Clonality Monoclonal

Clone Number 4A9

Immunogen Information

Immunogen Purified recombinant GSK3 β protein fragments expressed in E.coli.

Specificity This antibody detects endogenous levels of GSK3 β and does not cross-react with related proteins.

Target Information

Gene name GSK3B

Protein Name

Organism	Gene ID	UniProt ID
Human	2932;	P49841;
Mouse	56637;	Q9WV60;
Rat	84027;	P18266;

Cellular Localization

Cytoplasm . Nucleus . Cell membrane . The phosphorylated form shows localization to cytoplasm and cell membrane (PubMed:20937854). The MEMO1-RHOA-DIAPH1 signaling pathway controls localization of the phosphorylated form to the cell membrane (PubMed:20937854). .

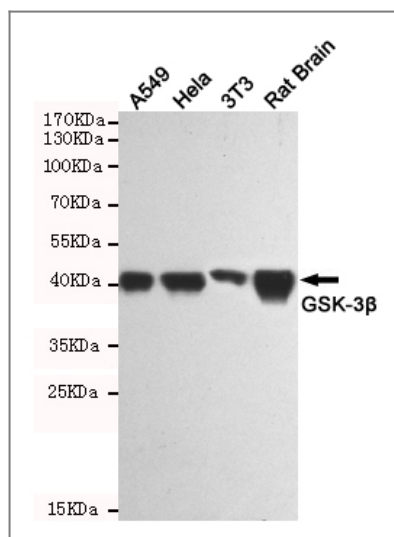
Tissue specificity

Expressed in testis, thymus, prostate and ovary and weakly expressed in lung, brain and kidney. Colocalizes with EIF2AK2/PKR and TAU in the Alzheimer disease (AD) brain.

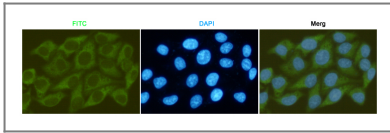
Function

Catalytic activity:ATP + [tau protein] = ADP + [tau protein] phosphate.,enzyme regulation:Inhibited when phosphorylated by AKT1.,Function:Participates in the Wnt signaling pathway. Implicated in the hormonal control of several regulatory proteins including glycogen synthase, MYB and the transcription factor JUN. Phosphorylates JUN at sites proximal to its DNA-binding domain, thereby reducing its affinity for DNA. Phosphorylates MUC1 in breast cancer cells, and decreases the interaction of MUC1 with CTNNB1/beta-catenin.,PTM:Phosphorylated by AKT1 and ILK1.,similarity:Belongs to the protein kinase superfamily.,similarity:Belongs to the protein kinase superfamily. CMGC Ser/Thr protein kinase family. GSK-3 subfamily.,similarity:Contains 1 protein kinase domain.,subunit:Monomer (By similarity). Interacts with CABYR, MUC1, NIN and PRUNE.,tissue specificity:Expressed in testis, thymus, prostate and ovary and weakly expressed in lung, brain and kidney.,

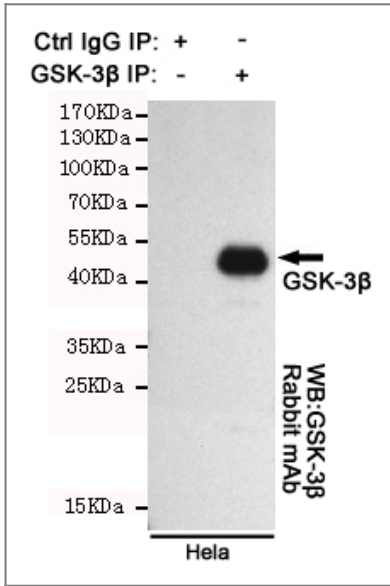
Validation Data



Western blot analysis of extracts from A549, HeLa, 3T3 and Rat Brain cell lysates using GSK-3β mouse mAb(1:1000 diluted).Predicted band size:46KDa.Observed band size:46KDa.



Immunocytochemistry staining of HeLa cells fixed with -20°C Methanol and using GSK-3 β mouse mAb (dilution 1:200).



Immunoprecipitation analysis of HeLa cell lysates using GSK-3 β .GSK-3 β Rabbit mAb was used for the western blot analysis (1:1000 diluted).

Contact information

Orders: order@immunoway.com
 Support: tech@immunoway.com
 Telephone: 877-594-3616 (Toll Free), 408-747-0185
 Website: <http://www.immunoway.com>
 Address: 2200 Ringwood Ave San Jose, CA 95131 USA



Please scan the QR code to access additional product information:
GSK3 β Mouse mAb

For Research Use Only. Not for Use in Diagnostic Procedures.

[Antibody](#) | [ELISA Kits](#) | [Protein](#) | [Reagents](#)