

## PP2A $\alpha$ and $\beta$ Mouse mAb

CatalogNo: YM1266

Comparable Abs 

### Key Features

#### Host Species

- Mouse

#### Reactivity

- Human, Mouse, Rat

#### Applications

- WB, IP

#### MW

- 36kD (Observed)

### Recommended Dilution Ratios

WB 1:2000

### Storage

#### Storage\*

-15°C to -25°C/1 year(Do not lower than -25°C)

#### Formulation

Liquid in PBS containing 50% glycerol, 0.5% BSA and 0.02% sodium azide.

### Basic Information

#### Clonality

Monoclonal

### Immunogen Information

#### Immunogen

Purified recombinant human full length PP2A beta protein expressed in E.coli

#### Specificity

This antibody detects endogenous levels of PP2A alpha and PP2A beta.

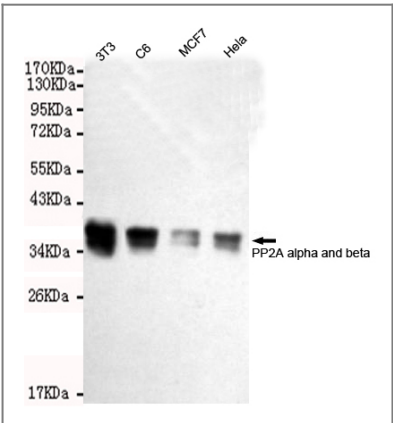
### Target Information

#### Gene name

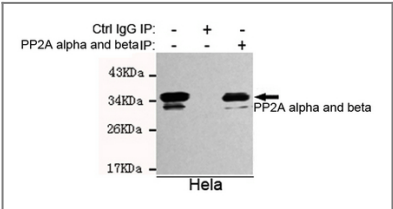
ppp2cb

Protein Name	Organism	Gene ID	UniProt ID
	Human	<a href="#">5516;</a>	<a href="#">P62714;</a>
	Mouse		<a href="#">P62715;</a>
Cellular Localization	Cytoplasm . Nucleus . Chromosome, centromere . Cytoplasm, cytoskeleton, spindle pole . In prometaphase cells, but not in anaphase cells, localizes at centromeres. During mitosis, also found at spindle poles.		
Tissue specificity	Fibroblast,Heart,Kidney,Liver,		
Function	<p>Catalytic activity:A phosphoprotein + H(2)O = a protein + phosphate.,cofactor:Binds 1 iron ion per subunit.,cofactor:Binds 1 manganese ion per subunit.,Function:PP2A can modulate the activity of phosphorylase B kinase casein kinase 2, mitogen-stimulated S6 kinase, and MAP-2 kinase.,PTM:Phosphorylation of either threonine (by autophosphorylation-activated protein kinase) or tyrosine results in inactivation of the phosphatase. Auto-dephosphorylation has been suggested as a mechanism for reactivation.,PTM:Reversibly methyl esterified on Leu-309. Carboxyl methylation may play a role in holoenzyme assembly. It varies during the cell cycle. Demethylated by PME1 (in vitro).,similarity:Belongs to the PPP phosphatase family.,similarity:Belongs to the PPP phosphatase family. PP-1 subfamily.,subcellular location:In prometaphase cells, but not in anaphase cells, localizes at centromeres. During mitosis, also found at spindle poles.,subunit:PP2A consists of a common heterodimeric core enzyme (composed of a 36 kDa catalytic subunit (subunit C) and a 65 kDa constant regulatory subunit (PR65) (subunit A)) that associates with a variety of regulatory subunits. Proteins that associate with the core dimer include three families of regulatory subunits B (the R2/B/PR55/B55, R3/B''/PR72/PR130/PR59 and R5/B'/B56 families), the 48 kDa variable regulatory subunit, viral proteins, and cell signaling molecules. Binds PPME1. May indirectly interact with SGOL1, most probably through regulatory B56 subunits.,</p>		

| Validation Data



Western blot detection of PP2A alpha and beta in HeLa,MCF7,C6 and 3T3 cell lysates using PP2A alpha and beta mouse mAb (1:2000 diluted).Predicted band size:36KDa.Observed band size:36KDa.



Immunoprecipitation analysis of HeLa cell lysates using PP2A alpha and beta mouse mAb.

## | Contact information

Orders: order@immunoway.com  
Support: tech@immunoway.com  
Telephone: 877-594-3616 (Toll Free), 408-747-0185  
Website: <http://www.immunoway.com>  
Address: 2200 Ringwood Ave San Jose, CA 95131 USA



Please scan the QR code  
to access additional  
product information:  
**PP2A  $\alpha$  and  $\beta$  Mouse  
mAb**

---

For Research Use Only. Not for Use in Diagnostic Procedures.

[Antibody](#) | [ELISA Kits](#) | [Protein](#) | [Reagents](#)