

Albumin Mouse mAb

CatalogNo: YM1255

Key Features

Host Species

- Mouse

Reactivity

- Human

Applications

- WB,ELISA,sELISA

MW

- 67kD (Observed)

Storage

Storage* -15°C to -25°C/1 year(Do not lower than -25°C)

Formulation Liquid in PBS containing 50% glycerol, 0.5% BSA and 0.02% sodium azide.

Recommended Dilution Ratios

WB 1:1000

ELISA 1:5000-20000

Basic Information

Clonality Monoclonal

Clone Number 4C3

Immunogen Information

Immunogen Purified Human albumin.

Specificity ALB Monoclonal Antibody detects endogenous levels of ALB protein.

Target Information

Gene name ALB

Protein Name ALB(Albumin)

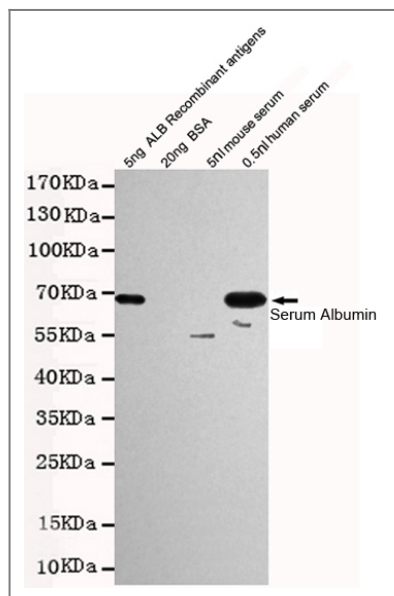
Organism	Gene ID	UniProt ID
Human	213;	P02768;
Mouse		P07724;
Rat		P02770;

Cellular Localization Secreted.

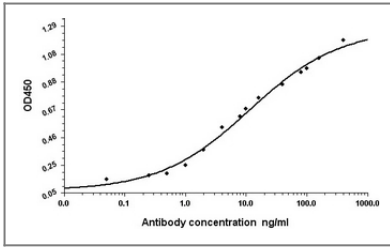
Tissue specificity Plasma.

Function Caution:A peptide arising from positions 166 to 174 was originally (PubMed:3087352 and PubMed:2437111) termed neurotensin-related peptide (NRP) or kinetensin and was thought to regulates fat digestion, lipid absorption, and blood flow.,Disease:A variant structure of albumin could lead to increased binding of zinc resulting in an asymptomatic augmentation of zinc concentration in the blood [MIM:194470].,Disease:Defects in ALB are a cause of familial dysalbuminemic hyperthyroxinemia (FDH) [MIM:103600]. FDH is a form of euthyroid hyperthyroxinemia that is due to increased affinity of ALB for T(4). It is the most common cause of inherited euthyroid hyperthyroxinemia in Caucasian population.,Function:Serum albumin, the main protein of plasma, has a good binding capacity for water, Ca(2+), Na(+), K(+), fatty acids, hormones, bilirubin and drugs. Its main function is the regulation of the colloidal osmotic pressure of blood.,miscellaneous:Acetylated on Lys-223 by acetylsalicylic acid.,online information:Serum albumin entry,polymorphism:The sequence shown is that of variant albumin A.,PTM:Glycated in diabetic patients.,PTM:Kenitra variant is partially O-glycosylated at Thr-620. It has two new disulfide bonds Cys-600 to Cys-602 and Cys-601 to Cys-606.,similarity:Belongs to the ALB/AFP/VDB family.,similarity:Contains 3 albumin domains.,tissue specificity:Plasma.,

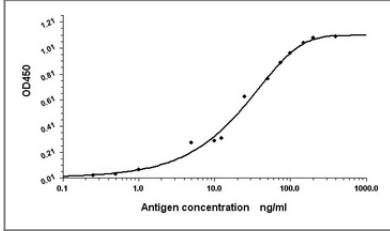
Validation Data



Western blot detection of Human Serum Albumin in 0.5nl human serum and 5ng ALB Recombinant antigens cell lysates using Human Serum Albumin mouse mAb (1:1000 diluted). Predicted band size:67KDa. Observed band size:67KDa.



Indirect ELISA assay for anti-Human Serum Albumin mouse mAb. Antigen coating concentration: 8µg/ml.



Standard Curve for Human Serum Albumin (Analyte: Human Serum Albumin protein); using Capture Antibody Mouse monoclonal [1A8-C5-B4] to Human Serum Albumin at 8µg/ml and Detector Antibody Rabbit polyclonal antiserum to Human Serum Albumin.

Contact information

Orders: order@immunoway.com
 Support: tech@immunoway.com
 Telephone: 877-594-3616 (Toll Free), 408-747-0185
 Website: <http://www.immunoway.com>
 Address: 2200 Ringwood Ave San Jose, CA 95131 USA



Please scan the QR code to access additional product information:
Albumin Mouse mAb

For Research Use Only. Not for Use in Diagnostic Procedures.

[Antibody](#) | [ELISA Kits](#) | [Protein](#) | [Reagents](#)