

# Mannose Phosphate Isomerase Mouse mAb

CatalogNo: YM1237

## Key Features

### Host Species

- Mouse

### Reactivity

- Human,Rat

### Applications

- WB,ICC

### MW

- 54kD (Observed)

## Recommended Dilution Ratios

WB 1:1000

ICC 1:300

## Storage

**Storage\*** -15°C to -25°C/1 year(Do not lower than -25°C)

**Formulation** Liquid in PBS containing 50% glycerol, 0.5% BSA and 0.02% sodium azide.

## Basic Information

**Clonality** Monoclonal

## Immunogen Information

**Immunogen** Purified recombinant human Mannose Phosphate Isomerase protein fragments expressed in E.coli.

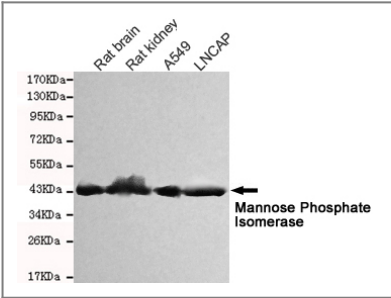
**Specificity** This antibody detects endogenous levels of Mannose Phosphate Isomerase and does not cross-react with related proteins.

## Target Information

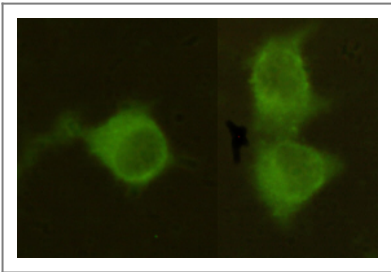
**Gene name** mpi

Protein Name	Organism	Gene ID	UniProt ID
	Human	<a href="#">4351;</a>	<a href="#">P34949;</a>
	Mouse		<a href="#">Q924M7;</a>
Cellular Localization	Cytoplasm .		
Tissue specificity	Expressed in all tissues, but more abundant in heart, brain and skeletal muscle.		
Function	Catalytic activity:D-mannose 6-phosphate = D-fructose 6-phosphate.,cofactor:Binds 1 zinc ion per subunit.,Disease:Defects in MPI are the cause of congenital disorder of glycosylation type 1B (CDG1B) [MIM:602579]; also known as carbohydrate-deficient glycoprotein syndrome type 1b (CDGS1B). Congenital disorders of glycosylation are metabolic deficiencies in glycoprotein biosynthesis that usually cause severe mental and psychomotor retardation. They are characterized by under-glycosylated serum glycoproteins. CDG1B is clinically characterized by protein-losing enteropathy.,Function:Involved in the synthesis of the GDP-mannose and dolichol-phosphate-mannose required for a number of critical mannosyl transfer reactions.,pathway:Nucleotide-sugar biosynthesis; GDP-D-mannose biosynthesis; alpha-D-mannose 1-phosphate from D-fructose 6-phosphate: step 1/2.,similarity:Belongs to the mannose-6-phosphate isomerase type 1 family.,tissue specificity:Expressed in all tissues, but more abundant in heart, brain and skeletal muscle.,		

Validation Data



Western blot detection of Mannose Phosphate Isomerase in Rat kidney,Rat brain,A549 and Lncap cell lysates and using Mannose Phosphate Isomerase mouse mAb (1:1000 diluted).Predicted band size: 54KDa.Observed band size: 45KDa.



Immunocytochemistry stain of Hela using Mannose Phosphate Isomerase mouse mAb (1:300).

Contact information

Orders: order@immunoway.com  
Support: tech@immunoway.com  
Telephone: 877-594-3616 (Toll Free), 408-747-0185  
Website: http://www.immunoway.com  
Address: 2200 Ringwood Ave San Jose, CA 95131 USA



Please scan the QR code  
to access additional  
product information:  
**Mannose Phosphate  
Isomerase Mouse  
mAb**

---

For Research Use Only. Not for Use in Diagnostic Procedures.

[Antibody](#) | [ELISA Kits](#) | [Protein](#) | [Reagents](#)