

sMtCK Mouse mAb

CatalogNo: YM1097

Key Features

Host Species

- Mouse

Reactivity

- Human, Mouse, Rat, Dog, Pig, Rabbit

Applications

- WB

MW

- 48kD (Calculated)

Storage

Storage* -15°C to -25°C/1 year (Do not lower than -25°C)

Formulation Liquid in PBS containing 50% glycerol, 0.5% BSA and 0.02% sodium azide.

Recommended Dilution Ratios

WB 1:1000-1:2000

Not yet tested in other applications.

Basic Information

Clonality Monoclonal

Clone Number 18G5

Immunogen Information

Immunogen Purified recombinant human sMtCK protein fragments expressed in E.coli.

Specificity sMtCK Monoclonal Antibody detects endogenous levels of sMtCK protein.

Target Information

Gene name CKMT2

Protein Name Creatine kinase S-type mitochondrial

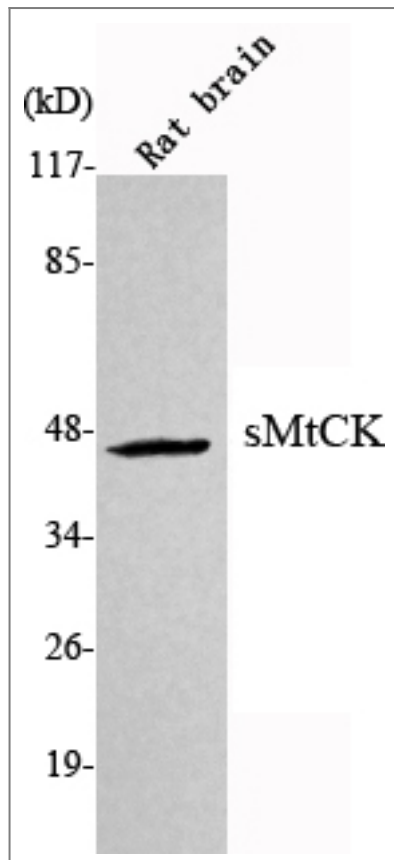
Organism	Gene ID	UniProt ID
Human	1160 ;	P17540 ;
Mouse	76722 ;	Q6P8J7 ;
Rat		P09605 ;

Cellular Localization Mitochondrion inner membrane; Peripheral membrane protein; Intermembrane side.

Tissue specificity Sarcomere-specific. Found only in heart and skeletal muscles.

Function Catalytic activity:ATP + creatine = ADP + phosphocreatine.,Function:Reversibly catalyzes the transfer of phosphate between ATP and various phosphogens (e.g. creatine phosphate). Creatine kinase isoenzymes play a central role in energy transduction in tissues with large, fluctuating energy demands, such as skeletal muscle, heart, brain and spermatozoa.,miscellaneous:Mitochondrial creatine kinase binds cardiolipin.,similarity:Belongs to the ATP:guanido phosphotransferase family.,subunit:Exists as an octamer composed of four CKMT2 homodimers.,tissue specificity:Sarcomere-specific. Found only in heart and skeletal muscles.,

Validation Data



Western Blot analysis using sMtCK Monoclonal Antibody against rat brain lysate.

| Contact information

Orders: order@immunoway.com
Support: tech@immunoway.com
Telephone: 877-594-3616 (Toll Free), 408-747-0185
Website: <http://www.immunoway.com>
Address: 2200 Ringwood Ave San Jose, CA 95131 USA



Please scan the QR code
to access additional
product information:
sMtCK Mouse mAb

For Research Use Only. Not for Use in Diagnostic Procedures.

[Antibody](#) | [ELISA Kits](#) | [Protein](#) | [Reagents](#)