

RASSF1 Mouse mAb

CatalogNo: YM1090 **Orthogonal Validated** 

Key Features

Host Species

- Mouse

Reactivity

- Human

Applications

- WB

MW

- 39kD (Calculated)

Storage

Storage* -15°C to -25°C/1 year(Do not lower than -25°C)**Formulation** Liquid in PBS containing 50% glycerol, 0.5% BSA and 0.02% sodium azide.

Recommended Dilution Ratios

WB 1:1000-1:2000**Not yet tested in other applications.**

Basic Information

Clonality Monoclonal**Clone Number** 7E1

Immunogen Information

Immunogen Purified recombinant human RASSF1 protein fragments expressed in E.coli.**Specificity** RASSF1 Monoclonal Antibody detects endogenous levels of RASSF1 protein.

Target Information

Gene name RASSF1

Protein Name Ras association domain-containing protein 1

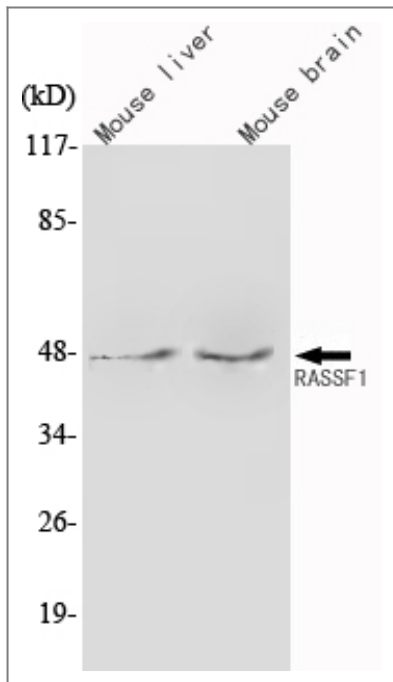
Organism	Gene ID	UniProt ID
Human	11186 ;	Q9NS23 ;
Mouse		Q99MK9 ;

Cellular Localization [Isoform A]: Cytoplasm, cytoskeleton. Cytoplasm, cytoskeleton, microtubule organizing center, centrosome. Cytoplasm, cytoskeleton, spindle. Cytoplasm, cytoskeleton, spindle pole. Nucleus. Localizes to cytoplasmic microtubules during interphase, to bipolar centrosomes associated with microtubules during prophase, to spindle fibers and spindle poles at metaphase and anaphase, to the midzone during early telophase, and to the midbody in late telophase in cells. Colocalizes with MDM2 in the nucleus.; [Isoform C]: Nucleus. Predominantly nuclear.

Tissue specificity Isoform A and isoform C are ubiquitously expressed in all tissues tested, however isoform A is absent in many corresponding cancer cell lines. Isoform B is mainly expressed in hematopoietic cells.

Function Function: Potential tumor suppressor. Required for death receptor-dependent apoptosis. Mediates activation of STK4 during Fas-induced apoptosis. When associated with MOAP1, promotes BAX conformational change and translocation to mitochondrial membranes in response to TNF and TNFSF10 stimulation. Isoform A interacts with CDC20, an activator of the anaphase-promoting complex, APC, resulting in the inhibition of APC activity and mitotic progression. Inhibits proliferation by negatively regulating cell cycle progression at the level of G1/S-phase transition by regulating accumulation of cyclin D1 protein. Isoform C has been shown not to perform these roles, no function has been identified for this isoform.,similarity:Contains 1 phorbol-ester/DAG-type zinc finger.,similarity:Contains 1 Ras-associating domain.,similarity:Contains 1 SARAH domain.,subcellular location:Localizes to cytoplasmic microtubules during interphase, to bipolar centrosomes associated with microtubules during prophase, to spindle fibers and spindle poles at metaphase and anaphase, to the midzone during early telophase, and to the midbody in late telophase in cells.,subcellular location:Predominantly nuclear.,subunit:Interacts with MAP1S and XPA. Binds to the N-terminal of CDC20 during prometaphase. Binds to STK3 and STK4. Isoform A interacts with MOAP1 and E4F1. Recruited to the TNFRSF1A and TNFRSF10A complexes in response to their respective cognate ligand, after internalization. Can self-associate. Isoform A interacts with RSSF5 and probably associates with HRAS1 via a RSSF1 isoform A-RSSF5 heterodimer.,tissue specificity:Isoform A and isoform C are ubiquitously expressed in all tissues tested, however isoform A is absent in many corresponding cancer cell lines. Isoform B is mainly expressed in hematopoietic cells.,

Validation Data



Western Blot analysis using RASSF1 Monoclonal Antibody against mouse liver, mouse brain lysate.

Contact information

Orders: order@immunoway.com
Support: tech@immunoway.com
Telephone: 877-594-3616 (Toll Free), 408-747-0185
Website: <http://www.immunoway.com>
Address: 2200 Ringwood Ave San Jose, CA 95131 USA



Please scan the QR code to access additional product information:
RASSF1 Mouse mAb

For Research Use Only. Not for Use in Diagnostic Procedures.

[Antibody](#) | [ELISA Kits](#) | [Protein](#) | [Reagents](#)