

Rab 2A Mouse mAb

CatalogNo: YM1089

| Key Features

Host Species

- Mouse

Reactivity

- Human, Mouse, Rat, Bovine, Chicken, Dog, Pig, Zebrafish

Applications

- WB, IF

MW

- 24kD
(Calculated)

| Recommended Dilution Ratios

WB 1:1000-1:2000

IF 1:100-1:500

Not yet tested in other applications.

| Storage

Storage* -15°C to -25°C/1 year(Do not lower than -25°C)

Formulation Liquid in PBS containing 50% glycerol, 0.5% BSA and 0.02% sodium azide.

| Basic Information

Clonality Monoclonal

| Immunogen Information

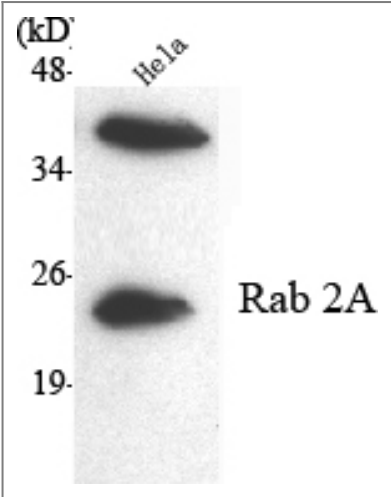
Immunogen Purified recombinant human Rab 2A (C-terminus) protein fragments expressed in E.coli.

Specificity Rab 2A Monoclonal Antibody detects endogenous levels of Rab 2A protein.

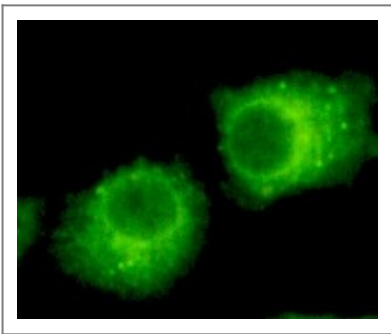
| Target Information

Gene name	RAB2A		
Protein Name	Ras-related protein Rab-2A		
	Organism	Gene ID	UniProt ID
	Human	5862 ;	P61019 ;
	Mouse	59021 ;	P53994 ;
	Rat	65158 ;	P05712 ;
Cellular Localization	Endoplasmic reticulum-Golgi intermediate compartment membrane ; Lipid-anchor . Melanosome . Endoplasmic reticulum membrane ; Lipid-anchor . Golgi apparatus membrane ; Lipid-anchor . Cytoplasmic vesicle, secretory vesicle, acrosome . Localized in the Golgi apparatus in the round spermatids and in the acrosome in the elongating spermatid (By similarity). Identified by mass spectrometry in melanosome fractions from stage I to stage IV (PubMed:17081065). .		
Tissue specificity	Brain,Skin,		
Function	Function:Required for protein transport from the endoplasmic reticulum to the Golgi complex.,similarity:Belongs to the small GTPase superfamily. Rab family.,subcellular location:Identified by mass spectrometry in melanosome fractions from stage I to stage IV.,subunit:Interacts with PRKCI.,		

| Validation Data



Western Blot analysis using Rab 2A Monoclonal Antibody against HeLa cell lysate.



Immunofluorescence analysis of HeLa cells using Rab 2A Monoclonal Antibody.

| Contact information

Orders: order@immunoway.com
Support: tech@immunoway.com
Telephone: 877-594-3616 (Toll Free), 408-747-0185
Website: <http://www.immunoway.com>
Address: 2200 Ringwood Ave San Jose, CA 95131 USA



Please scan the QR code
to access additional
product information:

Rab 2A Mouse mAb

For Research Use Only. Not for Use in Diagnostic Procedures.

[Antibody](#) | [ELISA Kits](#) | [Protein](#) | [Reagents](#)