

Mi2- α Mouse mAb

CatalogNo: YM1062

Key Features

Host Species

- Mouse

Reactivity

- Human, Mouse, Rat, Bovine, Dog, Pig

Applications

- WB, IHC, IF, FC

MW

- 227kD (Calculated)

Recommended Dilution Ratios

WB 1:1000-1:2000

IHC 1:500-1:1000

IF 1:100-1:500

Flow Cyt 1:100-1:200

Not yet tested in other applications.

Storage

Storage*

-15°C to -25°C/1 year (Do not lower than -25°C)

Formulation

Liquid in PBS containing 50% glycerol, 0.5% BSA and 0.02% sodium azide.

Basic Information

Clonality

Monoclonal

Clone Number

4A5

Immunogen Information

Immunogen

Purified recombinant human Mi2- α (C-terminus) protein fragments expressed in E.coli.

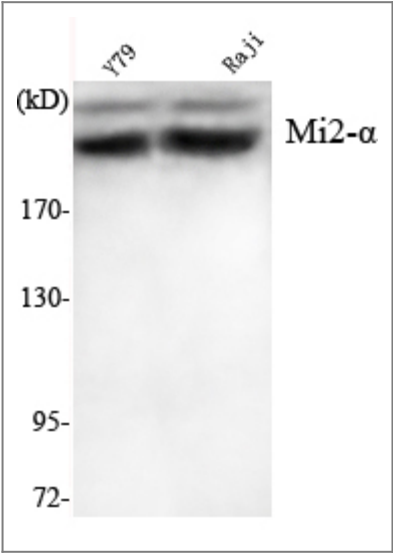
Specificity

Mi2- α Monoclonal Antibody detects endogenous levels of Mi2- α protein.

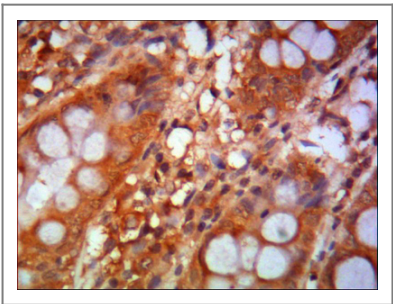
Target Information

Gene name	CHD3		
Protein Name	Chromodomain-helicase-DNA-binding protein 3		
	Organism	Gene ID	UniProt ID
	Human	1107 ;	Q12873 ;
Cellular Localization	Nucleus, PML body . Nucleus . Cytoplasm, cytoskeleton, microtubule organizing center, centrosome . Associates with centrosomes in interphase and mitosis. .		
Tissue specificity	Widely expressed.		
Function	Disease:One of the main antigens reacting with anti-MI-2 positive sera of dermatomyositis.,Function:Probable transcription regulator.,sequence Caution:Differs from position 1967 onward for unknown reasons.,similarity:Belongs to the SNF2/RAD54 helicase family.,similarity:Contains 1 helicase ATP-binding domain.,similarity:Contains 1 helicase C-terminal domain.,similarity:Contains 2 chromo domains.,similarity:Contains 2 PHD-type zinc fingers.,subunit:Central component of the nucleosome remodeling and histone deacetylase (NuRD) repressive complex. Interacts with TRIM28 and SERBP1. Interacts via its C-terminal region with HABP4.,tissue specificity:Widely expressed.,		

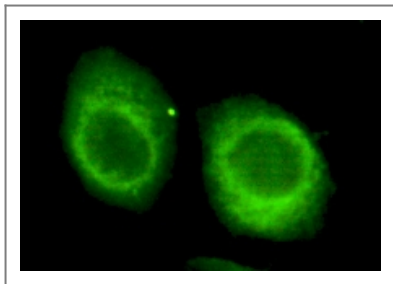
Validation Data



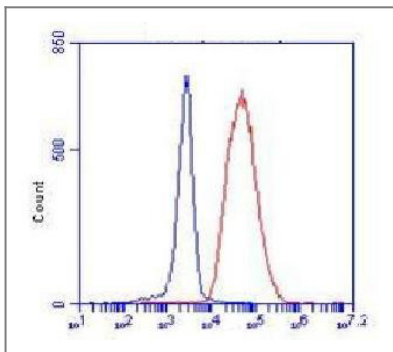
Western Blot analysis using Mi2-α Monoclonal Antibody against Y7P, Raji cell lysate.



Immunohistochemistry analysis of paraffin-embedded human colon using Mi2-α Monoclonal Antibody.



Immunofluorescence analysis of HeLa cells using Mi2- α Monoclonal Antibody.



Flow cytometric analysis of K562 cells stained with Mi2- α Monoclonal Antibody (red), followed by FITC-conjugated goat anti-mouse IgG. Blue line histogram represents the isotype control, normal mouse IgG.

Contact information

Orders: order@immunoway.com
Support: tech@immunoway.com
Telephone: 877-594-3616 (Toll Free), 408-747-0185
Website: <http://www.immunoway.com>
Address: 2200 Ringwood Ave San Jose, CA 95131 USA



Please scan the QR code to access additional product information:
Mi2- α Mouse mAb

For Research Use Only. Not for Use in Diagnostic Procedures.

[Antibody](#) | [ELISA Kits](#) | [Protein](#) | [Reagents](#)