

MAP2 Mouse mAb

CatalogNo: YM1061

Key Features

Host Species

- Mouse

Reactivity

- Human, Mouse, Rat, Bovine, Pig

Applications

- WB, IF

MW

- 200kD (Calculated)

Recommended Dilution Ratios

WB 1:1000-1:2000

IF 1:100-1:500

Not yet tested in other applications.

Storage

Storage* -15°C to -25°C/1 year(Do not lower than -25°C)

Formulation Liquid in PBS containing 50% glycerol, 0.5% BSA and 0.02% sodium azide.

Basic Information

Clonality Monoclonal

Immunogen Information

Immunogen Purified recombinant human MAP2 (N-terminus) protein fragments expressed in E.coli.

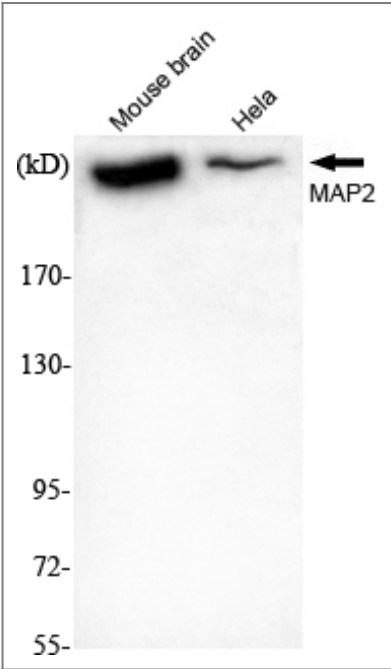
Specificity MAP2 Monoclonal Antibody detects endogenous levels of MAP2 protein.

Target Information

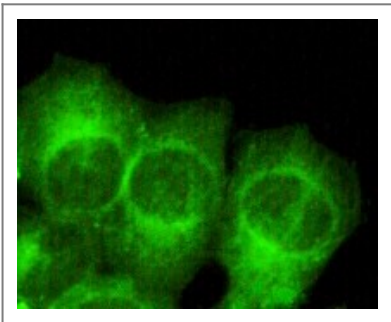
Gene name MAP2

Protein Name	Microtubule-associated protein 2		
	Organism	Gene ID	UniProt ID
	Human	4133;	P11137;
	Mouse		P20357;
	Rat		P15146;
Cellular Localization	Cytoplasm, cytoskeleton . Cell projection, dendrite .		
Tissue specificity	Brain,Brain cortex,Epithelium,Pancreas,Testis,		
Function	Alternative products:Additional isoforms seem to exist,Function:The exact function of MAP2 is unknown but MAPs may stabilize the microtubules against depolymerization. They also seem to have a stiffening effect on microtubules.,PTM:MAP2A/c is phosphorylated. Phosphorylated upon DNA damage, probably by ATM or ATR.,similarity:Contains 3 Tau/MAP repeats.,similarity:Contains 4 Tau/MAP repeats.,		

| Validation Data



Western Blot analysis using MAP-2 Monoclonal Antibody against mouse brain, HeLa cell lysate.



Immunofluorescence analysis of HeLa cells using MAP-2 Monoclonal Antibody.

| Contact information

Orders: order@immunoway.com
Support: tech@immunoway.com
Telephone: 877-594-3616 (Toll Free), 408-747-0185
Website: <http://www.immunoway.com>
Address: 2200 Ringwood Ave San Jose, CA 95131 USA



Please scan the QR code
to access additional
product information:
MAP2 Mouse mAb

For Research Use Only. Not for Use in Diagnostic Procedures.

[Antibody](#) | [ELISA Kits](#) | [Protein](#) | [Reagents](#)