

KDM1A Mouse mAb

CatalogNo: YM1059

Orthogonal Validated 

Key Features

Host Species

- Mouse

Reactivity

- Human, Mouse, Bovine, Dog, Pig

Applications

- WB, IHC, IF

MW

- 93kD (Calculated)

Recommended Dilution Ratios

WB 1:1000-1:2000**IHC 1:500-1:1000****IF 1:100-1:500****Not yet tested in other applications.**

Storage

Storage* -15°C to -25°C/1 year(Do not lower than -25°C)**Formulation** Liquid in PBS containing 50% glycerol, 0.5% BSA and 0.02% sodium azide.

Basic Information

Clonality Monoclonal**Clone Number** 11D12

Immunogen Information

Immunogen Purified recombinant human LSD1 (N-terminus) protein fragments expressed in E.coli.**Specificity** LSD1 Monoclonal Antibody detects endogenous levels of LSD1 protein.

| Target Information

Gene name KDM1A AOF2 KDM1 KIAA0601 LSD1

Protein Name Lysine-specific histone demethylase 1A

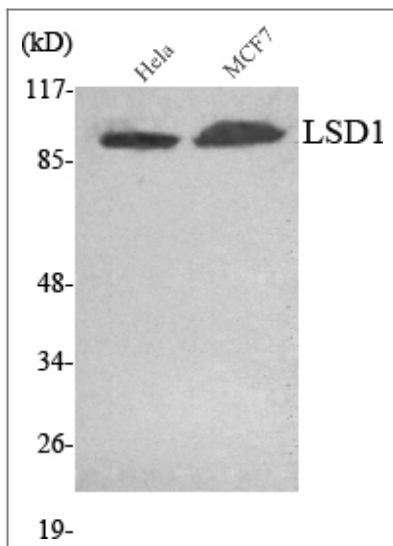
Organism	Gene ID	UniProt ID
Human	23028;	O60341;
Mouse	99982;	Q6ZQ88;

Cellular Localization Nucleus .

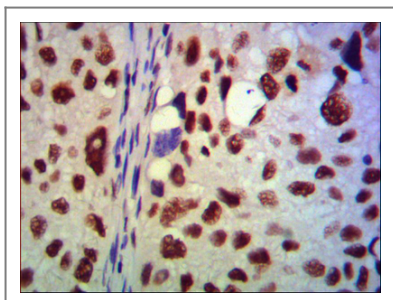
Tissue specificity Ubiquitously expressed.

Function cofactor:FAD.,Domain:The SWIRM domain may act as an anchor site for a histone tail.,Function:Histone demethylase that demethylates 'Lys-4' of histone H3, a specific tag for epigenetic transcriptional activation, thereby acting as a corepressor. Acts by oxidizing the substrate by FAD to generate the corresponding imine that is subsequently hydrolyzed. Demethylates both mono- and di-methylated 'Lys-4' of histone H3. May play a role in the repression of neuronal genes. Alone, it is unable to demethylate H3 'Lys-4' on nucleosomes and requires the presence of RCOR1/CoREST to achieve such activity. May also demethylate 'Lys-9' of histone H3, a specific tag for epigenetic transcriptional repression, thereby leading to derepression of androgen receptor target genes. Demethylates di-methylated 'Lys-370' of p53/TP53 which prevents interaction of p53/TP53 with TP53BP1 and represses p53/TP53-mediated transcriptional activation. Demethylates and stabilizes the DNA methylase DNMT1. Required for gastrulation during embryogenesis.,similarity:Belongs to the flavin monoamine oxidase family.,similarity:Contains 1 SWIRM domain.,subunit:Component of a BHC histone deacetylase complex that contains HDAC1, HDAC2, HMG20B/BRAF35, KDM1, RCOR1/CoREST and PHF21A/BHC80. The BHC complex may also contain ZMYM2, ZNF217, ZMYM3, GSE1 and GTF2I. In the complex, RCOR1/CoREST strongly enhances the demethylase activity and protects it from the proteasome while PHF21A/BHC80 inhibits the demethylase activity. Interacts with the androgen receptor (AR).,tissue specificity:Ubiquitously expressed.,

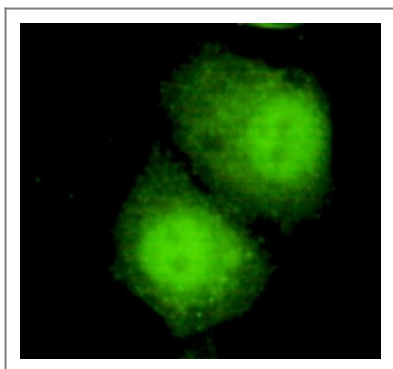
| Validation Data



Western Blot analysis using LSD1 Monoclonal Antibody against HeLa, MCF7 cell lysate.



Immunohistochemistry analysis of paraffin-embedded human lung cancer using LSD1 Monoclonal Antibody.



Immunofluorescence analysis of HeLa cells using LSD1 Monoclonal Antibody.

Contact information

Orders: order@immunoway.com
 Support: tech@immunoway.com
 Telephone: 877-594-3616 (Toll Free), 408-747-0185
 Website: <http://www.immunoway.com>
 Address: 2200 Ringwood Ave San Jose, CA 95131 USA



Please scan the QR code to access additional product information:
KDM1A Mouse mAb