

## VCAM-1 Mouse mAb

CatalogNo: YM0644

Orthogonal Validated 

### Key Features

#### Host Species

- Mouse

#### Reactivity

- Human

#### Applications

- WB,IHC,IF,ELISA

#### MW

- 81kD (Calculated)

### Recommended Dilution Ratios

**WB 1:500-1:2000****IHC 1:200-1:1000****ELISA 1:10000****IF 1:50-200**

### Storage

**Storage\*** -15°C to -25°C/1 year(Do not lower than -25°C)**Formulation** Liquid in PBS containing 50% glycerol, 0.5% BSA and 0.02% sodium azide.

### Basic Information

**Clonality** Monoclonal

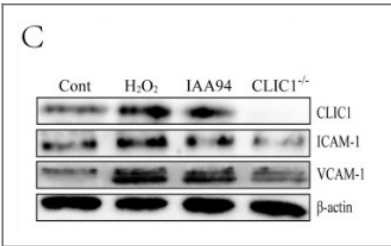
### Immunogen Information

**Immunogen** Purified recombinant fragment of human VCAM-1 expressed in E. Coli.**Specificity** VCAM-1 Monoclonal Antibody detects endogenous levels of VCAM-1 protein.

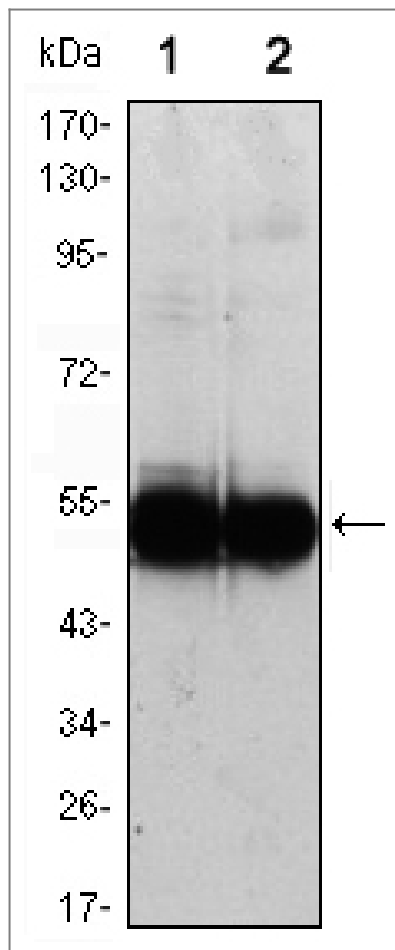
### Target Information

Gene name	VCAM1		
Protein Name	Vascular cell adhesion protein 1		
	Organism	Gene ID	UniProt ID
	Human	<a href="#">7412;</a>	<a href="#">P19320;</a>
	Mouse	<a href="#">22329;</a>	<a href="#">P29533;</a>
Cellular Localization	Membrane; Single-pass type I membrane protein.		
Tissue specificity	Expressed on inflamed vascular endothelium, as well as on macrophage-like and dendritic cell types in both normal and inflamed tissue.		
Function	<p>Alternative products:Additional isoforms seem to exist,Disease:May play an important role in the genesis of atherosclerosis and rheumatoid arthritis.,Domain:Either the first or the fourth Ig-like C2-type domain is required for VLA4-dependent cell adhesion.,Function:Important in cell-cell recognition. Appears to function in leukocyte-endothelial cell adhesion. Interacts with the beta-1 integrin VLA4 on leukocytes, and mediates both adhesion and signal transduction. The VCAM1/VLA4 interaction may play a pathophysiologic role both in immune responses and in leukocyte emigration to sites of inflammation.,induction:By cytokines (e.g. IL-1, TNF-alpha).,online information:VCAM-1,online information:VCAM1 entry,PTM:Sialoglycoprotein.,similarity:Contains 7 Ig-like C2-type (immunoglobulin-like) domains.,subunit:Binds to ECMV-D capsid proteins and acts as a receptor for this virus.,tissue specificity:Expressed on inflamed vascular endothelium, as well as on macrophage-like and dendritic cell types in both normal and inflamed tissue.,</p>		

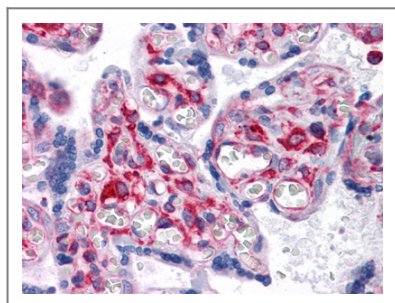
Validation Data



Xu, Yingling, et al. "CLIC1 inhibition attenuates vascular inflammation, oxidative stress, and endothelial injury." PloS one 11.11 (2016): e0166790.



Western Blot analysis using VCAM-1 Monoclonal Antibody against HUVEC (1) and EC (2) cell lysate.



Immunohistochemistry analysis of paraffin-embedded human Placenta tissues with AEC staining using VCAM-1 Monoclonal Antibody.

## Contact information

Orders: [order@immunoway.com](mailto:order@immunoway.com)  
 Support: [tech@immunoway.com](mailto:tech@immunoway.com)  
 Telephone: 877-594-3616 (Toll Free), 408-747-0185  
 Website: <http://www.immunoway.com>  
 Address: 2200 Ringwood Ave San Jose, CA 95131 USA



Please scan the QR code to access additional product information:  
**VCAM-1 Mouse mAb**