

TORC3 Mouse mAb

CatalogNo: YM0626

Key Features

Host Species

- Mouse

Reactivity

- Human, Monkey

Applications

- WB, IHC, IF, ELISA

MW

- 67kD (Calculated)

Recommended Dilution Ratios

WB 1:500-1:2000

IHC 1:200-1:1000

IF 1:200-1:1000

ELISA 1:10000

Not yet tested in other applications.

Storage

Storage*

-15°C to -25°C/1 year (Do not lower than -25°C)

Formulation

Liquid in PBS containing 50% glycerol, 0.5% BSA and 0.02% sodium azide.

Basic Information

Clonality

Monoclonal

Immunogen Information

Immunogen

Purified recombinant fragment of human TORC3 expressed in E. Coli.

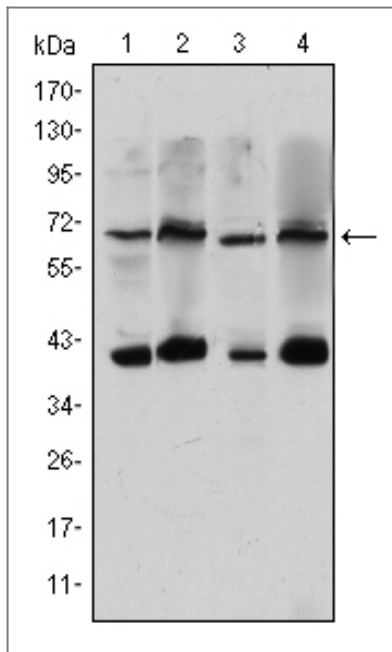
Specificity

TORC3 Monoclonal Antibody detects endogenous levels of TORC3 protein.

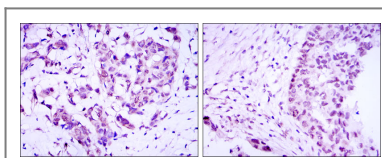
Target Information

Gene name	CRTC3		
Protein Name	CREB-regulated transcription coactivator 3		
	Organism	Gene ID	UniProt ID
	Human	64784;	Q6UUV7;
	Mouse		Q91X84;
Cellular Localization	Nucleus . Cytoplasm . Appears to be mainly nuclear (PubMed:15454081). Translocates to the nucleus following adenylyl cyclase or MAP kinase activation (PubMed:30611118). .		
Tissue specificity	Predominantly expressed in B and T lymphocytes. Highest levels in lung. Also expressed in brain, colon, heart, kidney, ovary, and prostate. Weak expression in liver, pancreas, muscle, small intestine, spleen and stomach.		
Function	<p>Function:Transcriptional coactivator for CREB1 which activates transcription through both consensus and variant cAMP response element (CRE) sites. Acts as a coactivator, in the SIK/TORC signaling pathway, being active when dephosphorylated and acts independently of CREB1 'Ser-133' phosphorylation. Enhances the interaction of CREB1 with TAF4. Regulates the expression of specific CREB-activated genes such as the steroidogenic gene, StAR. Potent coactivator of PPARGC1A and inducer of mitochondrial biogenesis in muscle cells. Also coactivator for TAX activation of the human T-cell leukemia virus type 1 (HTLV-1) long terminal repeats (LTR).,similarity:Belongs to the TORC family.,subcellular location:Appears to be mainly nuclear.,subunit:Binding, as a tetramer, through its N-terminal region, with the bZIP domain of CREB1 enhances recruitment of TAF4 to the promoter. 'Arg-314' in the bZIP domain of CREB1 is essential for this interaction (By similarity). Interaction with HTLV-1 TAX enhances its transcriptional activity. Interacts, via the N-terminal with the ankyrin repeats of BCL3, to form a complex with CREB1 on CRE and TxRE responsive elements and represses HTLV-1 LTR-mediated transcription.,tissue specificity:Predominantly expressed in B and T lymphocytes. Highest levels in lung. Also expressed in brain, colon, heart, kidney, ovary, and prostate. Weak expression in liver, pancreas, muscle, small intestine, spleen and stomach.,</p>		

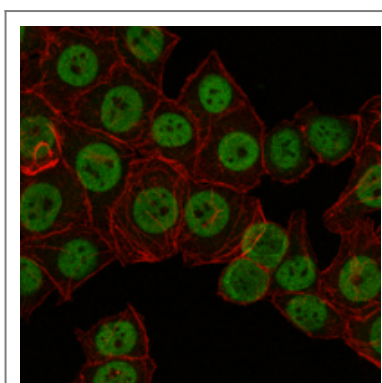
| Validation Data



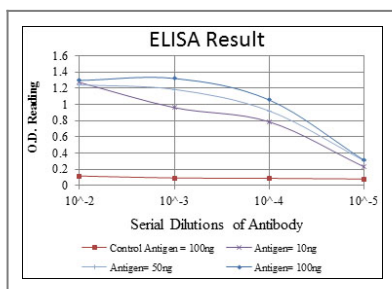
Western Blot analysis using TORC3 Monoclonal Antibody against HeLa (1), Jurkat (2), Cos7 (3) and MCF-7 (4) cell lysate.



Immunohistochemistry analysis of paraffin-embedded breast cancer (left) and ovarian cancer (right) with DAB staining using TORC3 Monoclonal Antibody.



Immunofluorescence analysis of NTERA-2 cells using TORC3 Monoclonal Antibody (green). Red: Actin filaments have been labeled with Alexa Fluor-555 phalloidin.



Contact information

Orders: order@immunoway.com
Support: tech@immunoway.com
Telephone: 877-594-3616 (Toll Free), 408-747-0185
Website: <http://www.immunoway.com>
Address: 2200 Ringwood Ave San Jose, CA 95131 USA



Please scan the QR code
to access additional
product information:
TORC3 Mouse mAb

For Research Use Only. Not for Use in Diagnostic Procedures.

[Antibody](#) | [ELISA Kits](#) | [Protein](#) | [Reagents](#)