

TCP-1 β Mouse mAb

CatalogNo: YM0613

| Key Features

Host Species

- Mouse

Reactivity

- Human, Mouse, Rat, Monkey

Applications

- WB, IF, FC, ELISA

MW

- 57kD (Calculated)

| Recommended Dilution Ratios

WB 1:500-1:2000

IF 1:200-1:1000

Flow Cyt 1:200-1:400

ELISA 1:10000

Not yet tested in other applications.

| Storage

Storage*

-15°C to -25°C/1 year(Do not lower than -25°C)

Formulation

Liquid in PBS containing 50% glycerol, 0.5% BSA and 0.02% sodium azide.

| Basic Information

Clonality

Monoclonal

| Immunogen Information

Immunogen

Purified recombinant fragment of human TCP-1 β expressed in E. Coli.

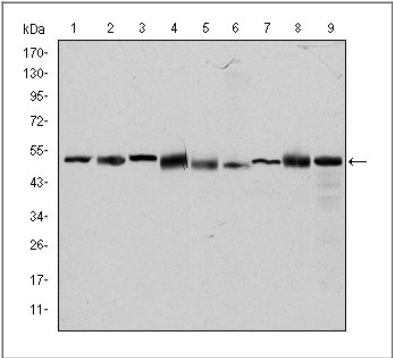
Specificity

TCP-1 β Monoclonal Antibody detects endogenous levels of TCP-1 β protein.

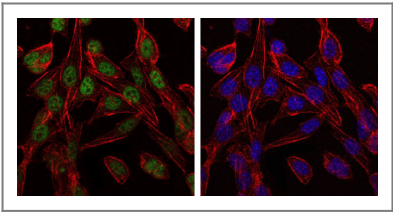
| Target Information

| | | | |
|-----------------------|--|--------------------------|--------------------------|
| Gene name | CCT2 | | |
| Protein Name | T-complex protein 1 subunit beta | | |
| | Organism | Gene ID | UniProt ID |
| | Human | 10576 ; | P78371 ; |
| | Mouse | 12461 ; | P80314 ; |
| | Rat | 299809 ; | Q5XIM9 ; |
| Cellular Localization | Cytoplasm . | | |
| Tissue specificity | B-cell lymphoma,Brain,Cajal-Retzius cell,Fetal brain cortex,Liver,P | | |
| Function | Function:Molecular chaperone; assist the folding of proteins upon ATP hydrolysis. Known to play a role, in vitro, in the folding of actin and tubulin.,similarity:Belongs to the TCP-1 chaperonin family.,subunit:Heterooligomeric complex of about 850 to 900 kDa that forms two stacked rings, 12 to 16 nm in diameter. Interacts with PACRG., | | |

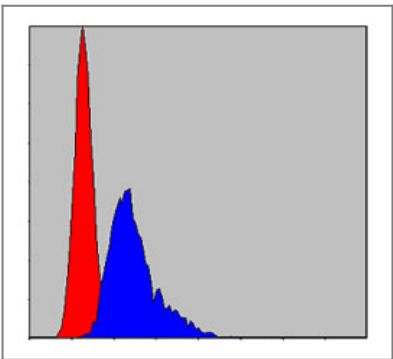
Validation Data



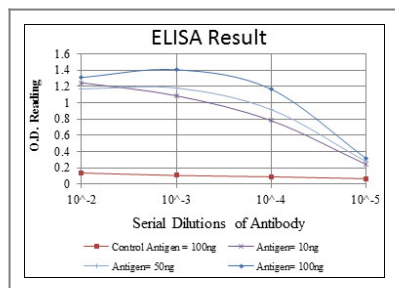
Western Blot analysis using TCP-1 β Monoclonal Antibody against HeLa (1), MCF-7 (2), Jurkat (3), T47D (4), K562 (5), A431 (6), NIH/3T3 (7), PC-12 (8) and Cos7 (9) cell lysate.



Immunofluorescence analysis of 3T3-L1 cells using TCP-1 β Monoclonal Antibody (green). Blue: DRAQ5 fluorescent DNA dye. Red: Actin filaments have been labeled with Alexa Fluor-555 phalloidin.



Flow cytometric analysis of NIH/3T3 cells using TCP-1 β Monoclonal Antibody (blue) and negative control (red).



Contact information

Orders: order@immunoway.com
 Support: tech@immunoway.com
 Telephone: 877-594-3616 (Toll Free), 408-747-0185
 Website: <http://www.immunoway.com>
 Address: 2200 Ringwood Ave San Jose, CA 95131 USA



Please scan the QR code
 to access additional
 product information:
TCP-1 β Mouse mAb

For Research Use Only. Not for Use in Diagnostic Procedures.

[Antibody](#) | [ELISA Kits](#) | [Protein](#) | [Reagents](#)