

Synaptotagmin 1 Mouse mAb

CatalogNo: YM0605

Orthogonal Validated 

Key Features

Host Species

- Mouse

Reactivity

- Human

Applications

- WB, ELISA

Recommended Dilution Ratios

WB 1:500-1:2000**ELISA 1:10000****Not yet tested in other applications.**

Storage

Storage*

-15°C to -25°C/1 year (Do not lower than -25°C)

Formulation

Liquid in PBS containing 50% glycerol, 0.5% BSA and 0.02% sodium azide.

Basic Information

Clonality

Monoclonal

Immunogen Information

Immunogen

Purified recombinant fragment of Synaptotagmin 1 expressed in E. Coli.

Specificity

Synaptotagmin 1 Monoclonal Antibody detects endogenous levels of Synaptotagmin 1 protein.

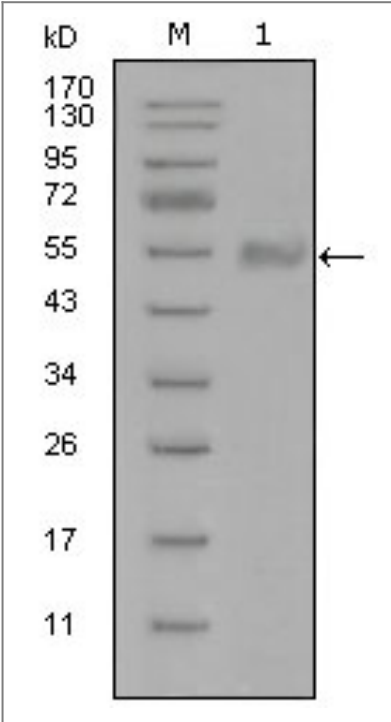
Target Information

Gene name

SYT1

| | | | |
|-----------------------|---|-----------------------|-------------------------|
| Protein Name | Synaptotagmin-1 | | |
| | Organism | Gene ID | UniProt ID |
| | Human | 6857; | P21579; |
| | Mouse | | P46096; |
| Cellular Localization | Cytoplasmic vesicle, secretory vesicle membrane ; Single-pass membrane protein . Cytoplasmic vesicle, secretory vesicle, synaptic vesicle membrane ; Single-pass membrane protein . Cytoplasmic vesicle, secretory vesicle, chromaffin granule membrane ; Single-pass membrane protein . Cytoplasm . | | |
| Tissue specificity | Expressed in melanocytes (PubMed:23999003). | | |
| Function | cofactor: Binds 3 calcium ions per subunit. The ions are bound to the C2 domains.,Domain: The first C2 domain mediates Ca(2+)-dependent phospholipid binding.,Domain: The second C2 domain mediates interaction with SV2A and STN2.,Function: May have a regulatory role in the membrane interactions during trafficking of synaptic vesicles at the active zone of the synapse. It binds acidic phospholipids with a specificity that requires the presence of both an acidic head group and a diacyl backbone. A Ca(2+)-dependent interaction between synaptotagmin and putative receptors for activated protein kinase C has also been reported. It can bind to at least three additional proteins in a Ca(2+)-independent manner; these are neurexins, syntaxin and AP2.,similarity: Belongs to the synaptotagmin family.,similarity: Contains 2 C2 domains.,subcellular location: Synaptic vesicles and chromaffin granules.,subunit: Homotetramer (Probable). Interacts with SCAMP5, STN2, SV2A, SV2B, SV2C and RIMS1. Forms a complex with SV2B, syntaxin 1 and SNAP25., | | |

| Validation Data



Western Blot analysis using Synaptotagmin 1 Monoclonal Antibody against truncated Trx-Synaptotagmin 1 recombinant protein (1).

| Contact information

Orders: order@immunoway.com
Support: tech@immunoway.com
Telephone: 877-594-3616 (Toll Free), 408-747-0185
Website: <http://www.immunoway.com>
Address: 2200 Ringwood Ave San Jose, CA 95131 USA



Please scan the QR code
to access additional
product information:
Synaptotagmin 1
Mouse mAb

For Research Use Only. Not for Use in Diagnostic Procedures.

[Antibody](#) | [ELISA Kits](#) | [Protein](#) | [Reagents](#)