

RSK2 Mouse mAb

CatalogNo: YM0565

Key Features

Host Species

- Mouse

Reactivity

- Human

Applications

- WB,IF,FC,ELISA

MW

- 84kD (Calculated)

Recommended Dilution Ratios

WB 1:500-1:2000

IF 1:200-1:1000

Flow Cyt 1:200-1:400

ELISA 1:10000

Not yet tested in other applications.

Storage

Storage*

-15°C to -25°C/1 year(Do not lower than -25°C)

Formulation

Liquid in PBS containing 50% glycerol, 0.5% BSA and 0.02% sodium azide.

Basic Information

Clonality

Monoclonal

Immunogen Information

Immunogen

Purified recombinant fragment of human Rsk-2 expressed in E. Coli.

Specificity

Rsk-2 Monoclonal Antibody detects endogenous levels of Rsk-2 protein.

Target Information

Gene name RPS6KA3 ISPK1 MAPKAPK1B RSK2

Protein Name Ribosomal protein S6 kinase alpha-3

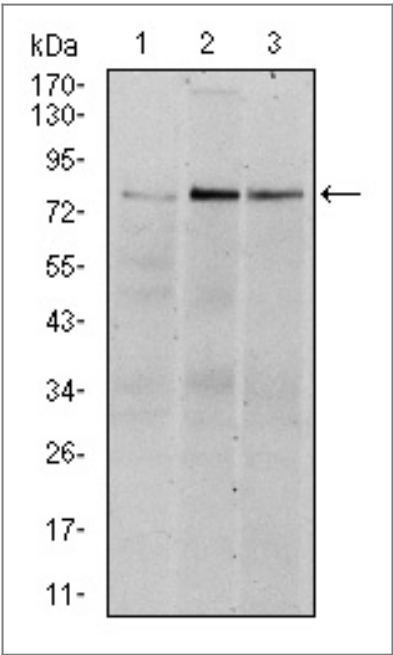
Organism	Gene ID	UniProt ID
Human	6197 ;	P51812 ;
Mouse	110651 ;	P18654 ;

Cellular Localization Nucleus . Cytoplasm .

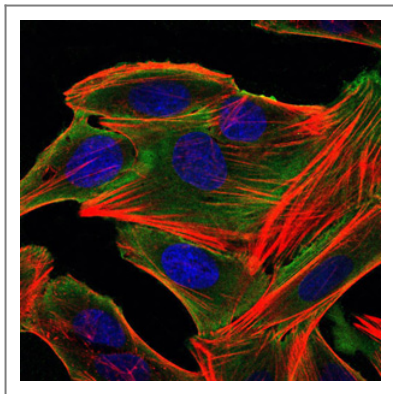
Tissue specificity Expressed in many tissues, highest levels in skeletal muscle.

Function Catalytic activity:ATP + a protein = ADP + a phosphoprotein.,cofactor:Magnesium.,Disease:Defects in RPS6KA3 are the cause of Coffin-Lowry syndrome (CLS) [MIM:303600]; an X-linked dominant disorder characterized by severe mental retardation with facial and digital dysmorphisms, and progressive skeletal deformations.,enzyme regulation:Activated by multiple phosphorylations on threonine and serine residues.,Function:Serine/threonine kinase that may play a role in mediating the growth-factor and stress induced activation of the transcription factor CREB.,PTM:Autophosphorylated on Ser-386, as part of the activation process.,PTM:Ser-227 phosphorylation promotes Ser-386 phosphorylation and leads to basal activation. Full activation by growth factors requires additional phosphorylation on Ser-369.,similarity:Belongs to the protein kinase superfamily. AGC Ser/Thr protein kinase family. S6 kinase subfamily.,similarity:Contains 1 AGC-kinase C-terminal domain.,similarity:Contains 2 protein kinase domains.,subunit:Forms a complex with either ERK1 or ERK2 in quiescent cells. Transiently dissociates following mitogenic stimulation (By similarity). Interacts with NFATC4.,tissue specificity:Expressed in many tissues, highest levels in skeletal muscle.,

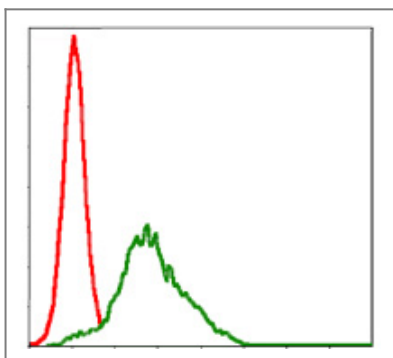
Validation Data



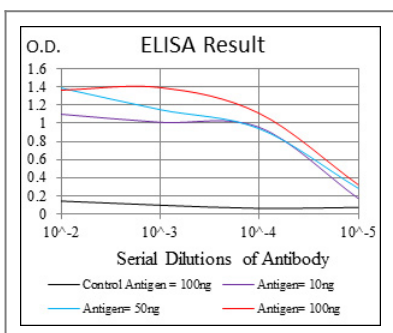
Western Blot analysis using Rsk-2 Monoclonal Antibody against HeLa (1), MCF-7 (2), and HepG2 (3) cell lysate.



Immunofluorescence analysis of HepG2 cells using Rsk-2 Monoclonal Antibody (green). Blue: DRAQ5 fluorescent DNA dye. Red: Actin filaments have been labeled with Alexa Fluor-555 phalloidin.



Flow cytometric analysis of HepG2 cells using Rsk-2 Monoclonal Antibody (green) and negative control (red).



Contact information

Orders: order@immunoway.com
 Support: tech@immunoway.com
 Telephone: 877-594-3616 (Toll Free), 408-747-0185
 Website: <http://www.immunoway.com>
 Address: 2200 Ringwood Ave San Jose, CA 95131 USA



Please scan the QR code to access additional product information:
RSK2 Mouse mAb

For Research Use Only. Not for Use in Diagnostic Procedures.

[Antibody](#) | [ELISA Kits](#) | [Protein](#) | [Reagents](#)